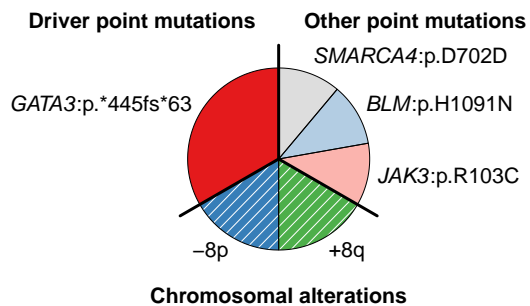
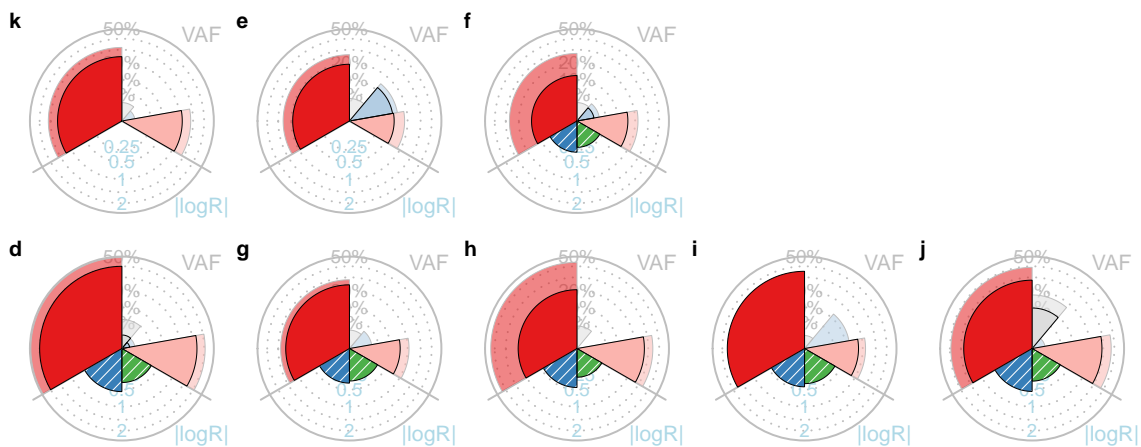


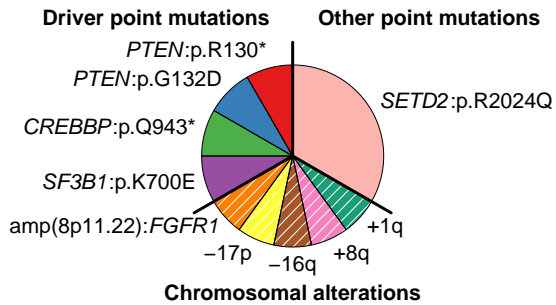
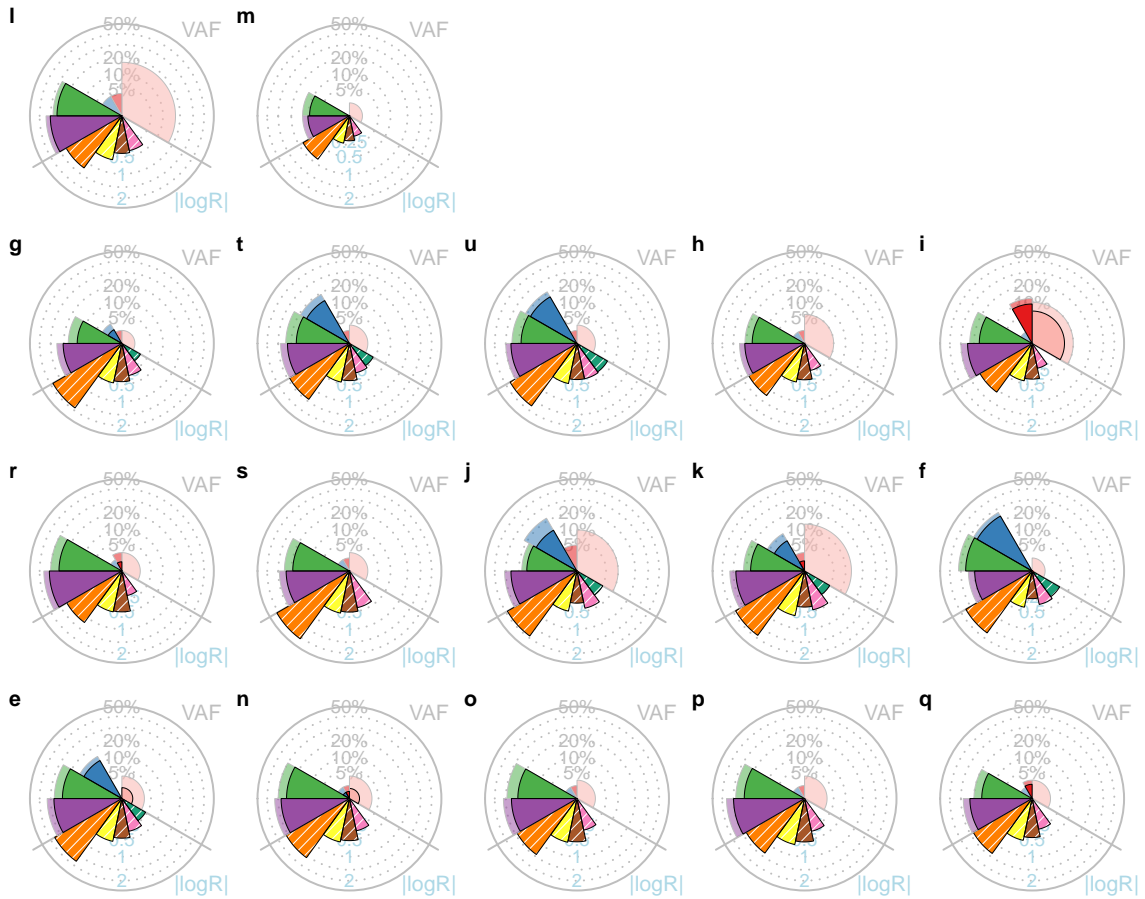
PD9193: ER+/HER2-, G3, pS, P=6.4e-13, Q=3.6e-12

3.5 cm



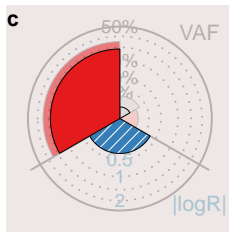
PD9694: ER+/HER2-, G2, pS, P=1.5e-46, Q=1.3e-45

2.6 cm

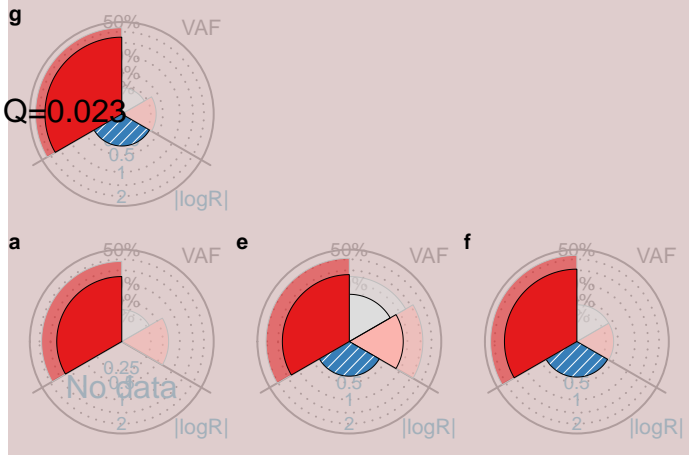


PD9768: TN, G3, RD, P=0.013, Q=0.023

4 cm

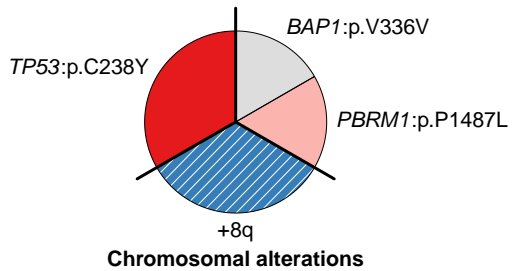


3.4 cm



Driver point mutations

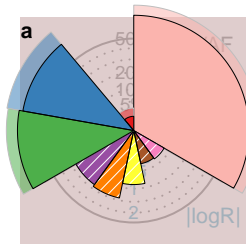
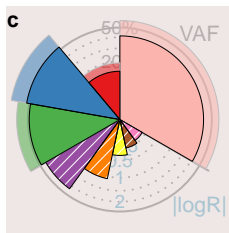
Other point mutations



PD9769: TN, G3, RD, P=0.00014, Q=3e-04

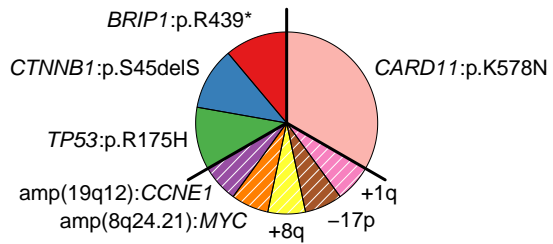
2.8 cm

2.5 cm



Driver point mutations

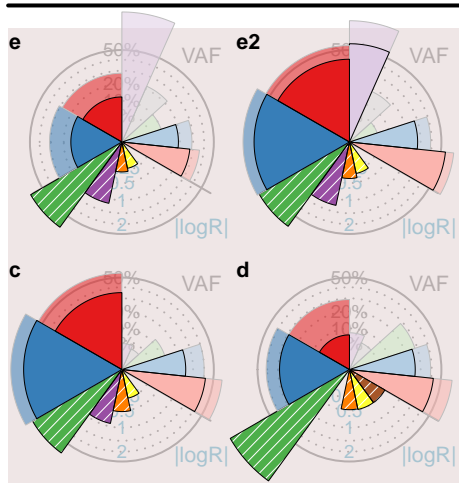
Other point mutations



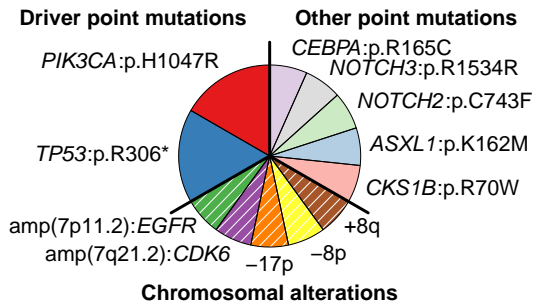
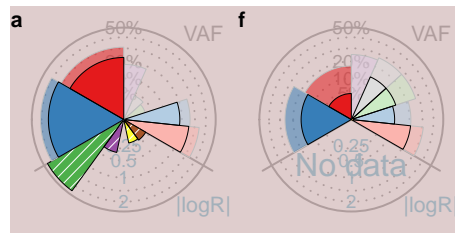
Chromosomal alterations

PD9770: TN, G3, RD, P=0.0018, Q=0.0033

3.1 cm



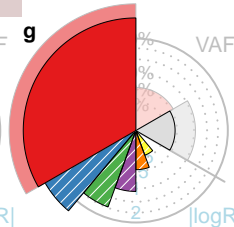
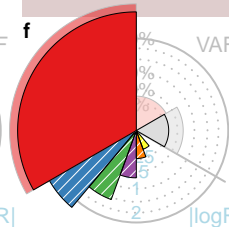
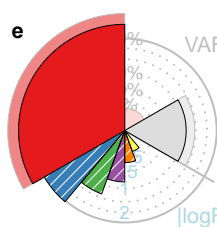
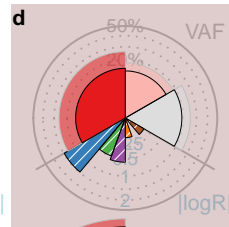
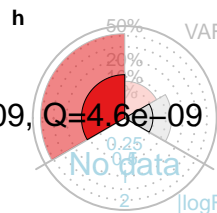
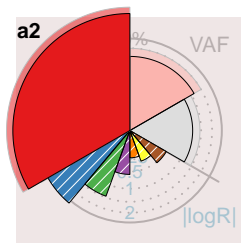
1.7 cm



PD9771: TN, G3, RD, P=1.1e-09, Q=4.6e-09

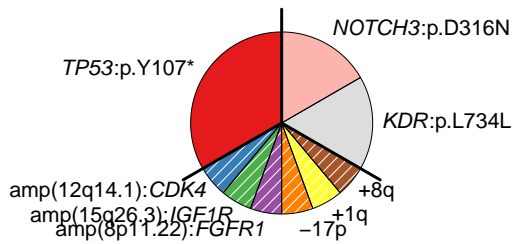
0.2 cm

6 cm



Driver point mutations

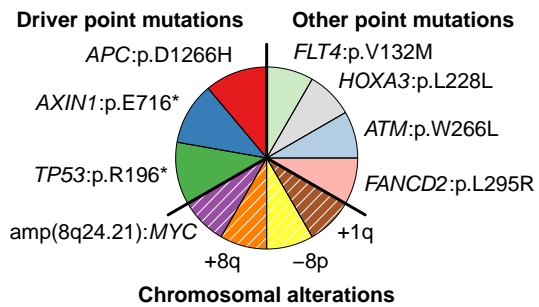
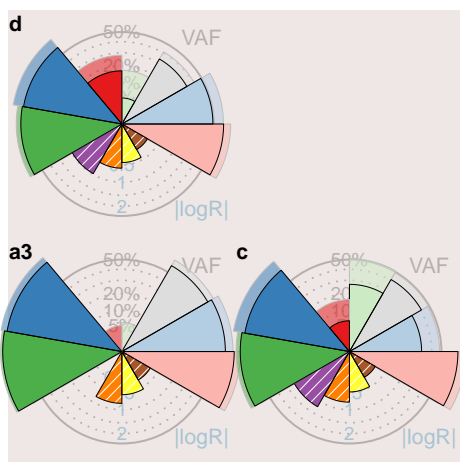
Other point mutations



Chromosomal alterations

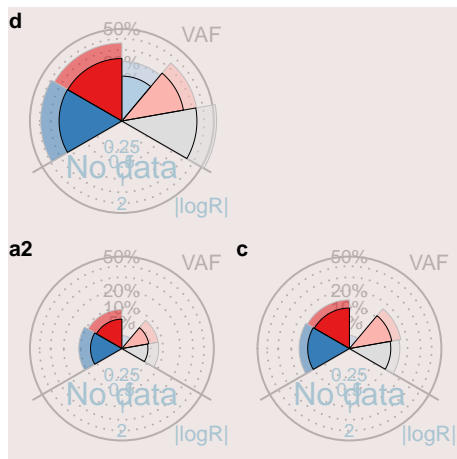
PD9772: TN, G3, pCR, P=0.001, Q=0.002

3.7 cm



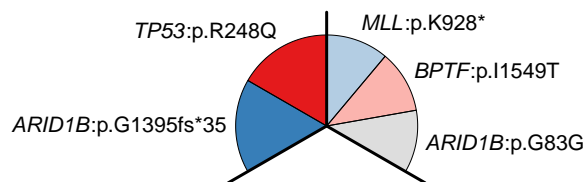
PD9773: TN, G3, pCR, P=0.33, Q=0.46

2.3 cm



Driver point mutations

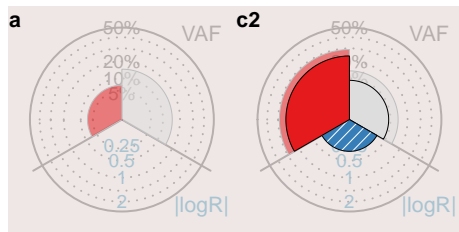
Other point mutations



Chromosomal alterations

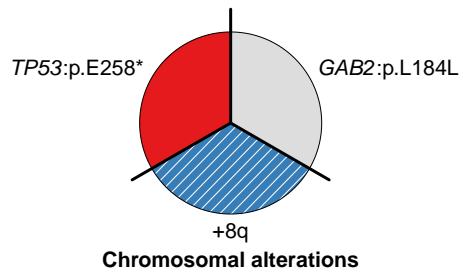
PD9774: TN, G3, pCR, P=1, Q=1

1.3 cm



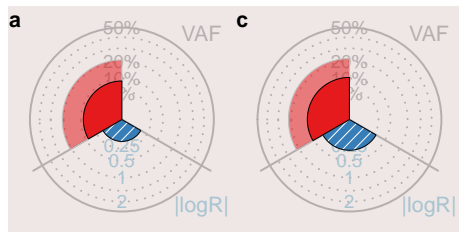
Driver point mutations

Other point mutations



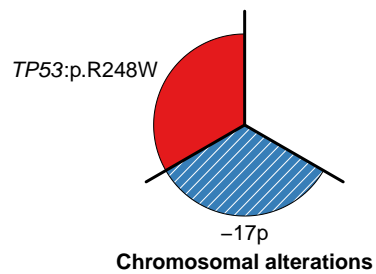
PD9775: TN, G3, pCR, P=NA, Q=NA

2.7 cm



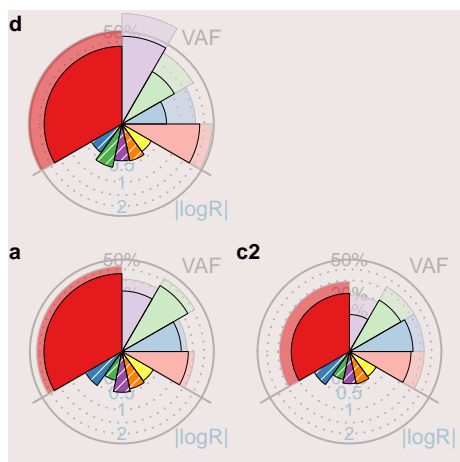
Driver point mutations

Other point mutations



PD9776: TN, G2, pCR, P=0.29, Q=0.41

3.5 cm



Driver point mutations

TP53:p.P278S

Other point mutations

KDM5C:p.V416L

NF2:p.R310G

BIRC7:p.W180R

MED12L:p.Q286K

+8q
amp(8q24.21):MYC

-17p

-8p

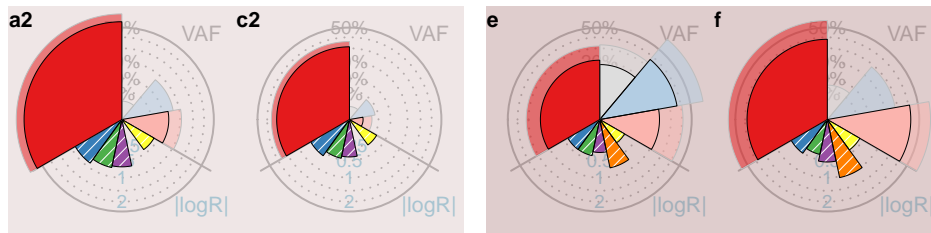
-16q

Chromosomal alterations

PD9777: TN, G3, RD, P=6.7e-08, Q=2.5e-07

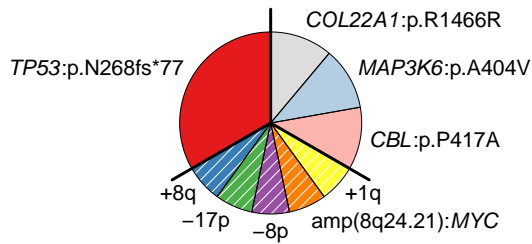
4 cm

1.8 cm



Driver point mutations

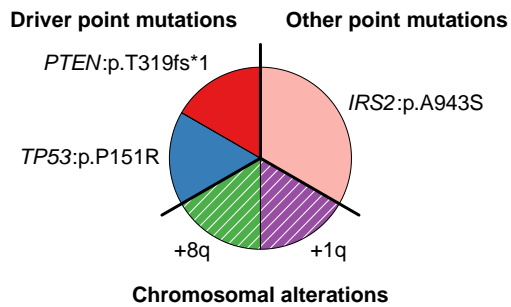
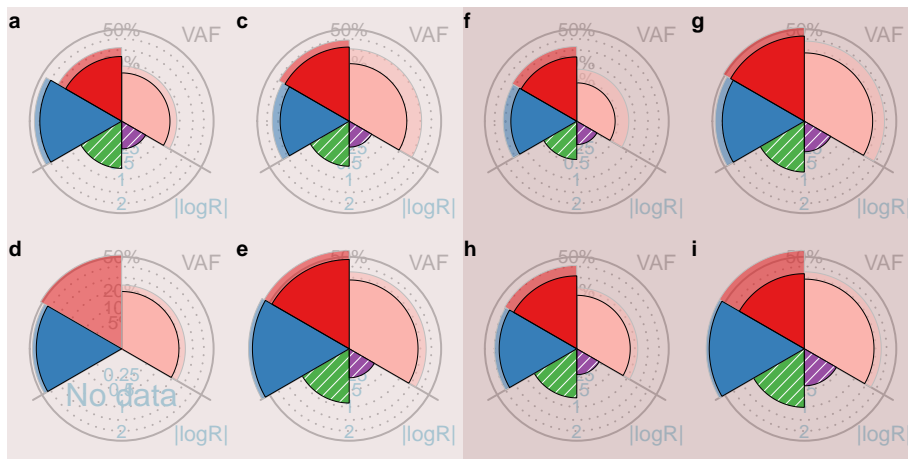
Other point mutations



Chromosomal alterations

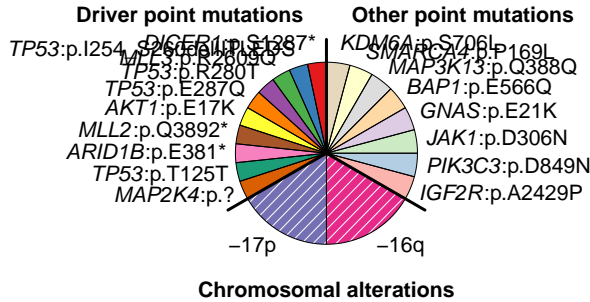
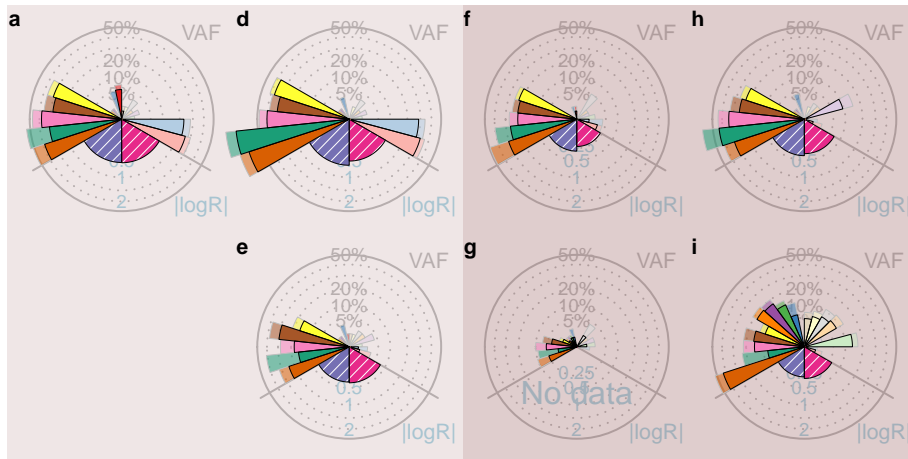
PD9849: ER+/HER2-, G2, pS, P=0.7, Q=0.8

3 cm



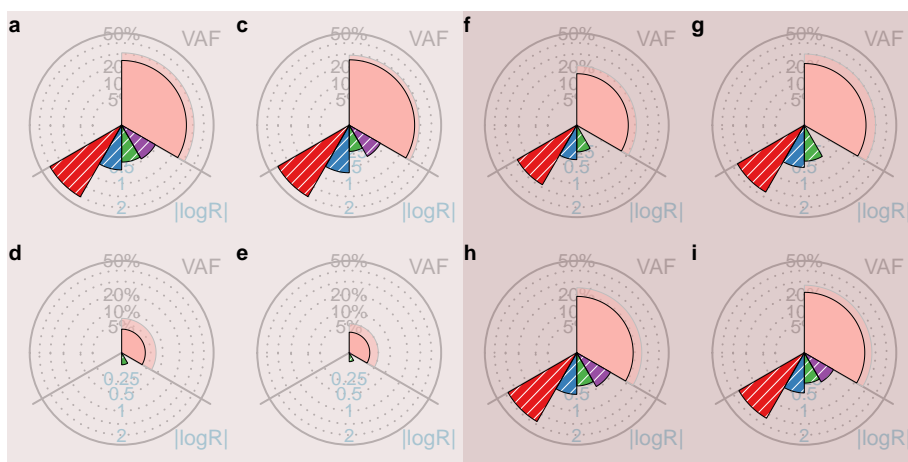
PD9850: ER+/HER2-, G2, pS, P=2e-134, Q=3e-133

3.2 cm



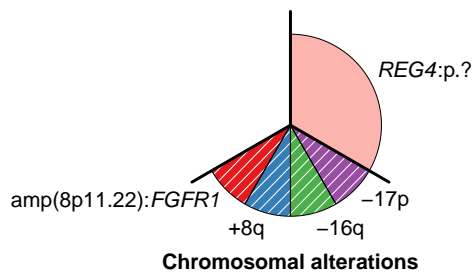
PD9851: ER+/HER2-, G2, pS, P=NA, Q=NA

3.3 cm



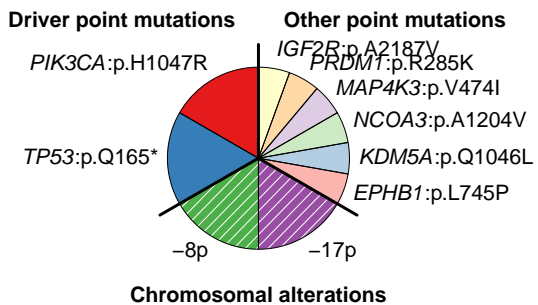
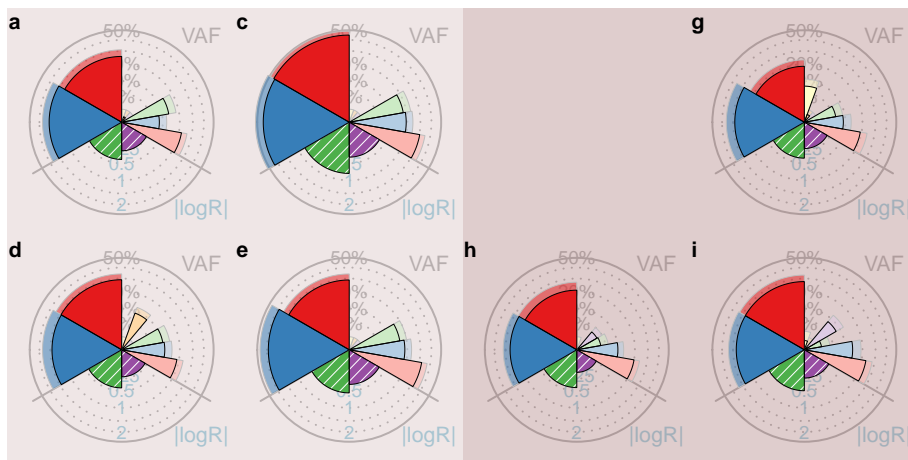
Driver point mutations

Other point mutations



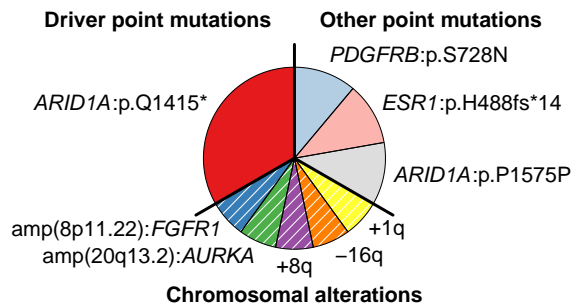
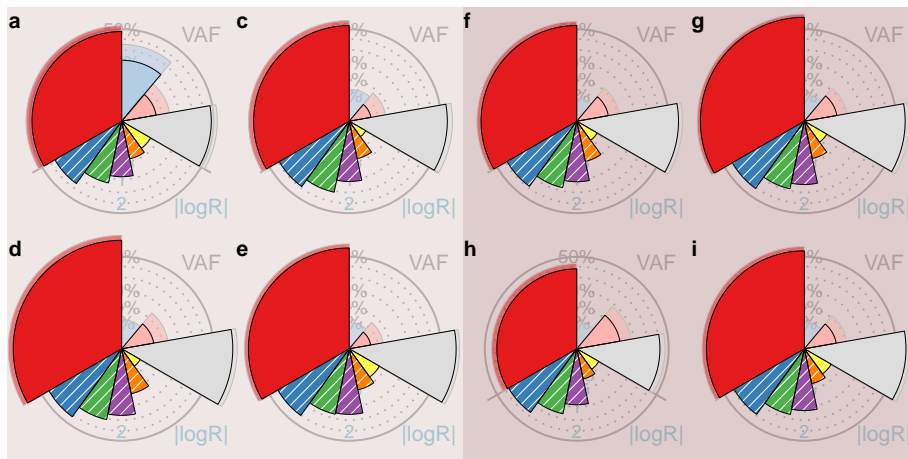
PD9852: TN, G3, pS, P=1e-21, Q=6.5e-21

4 cm



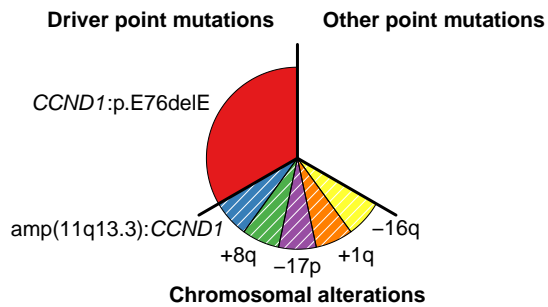
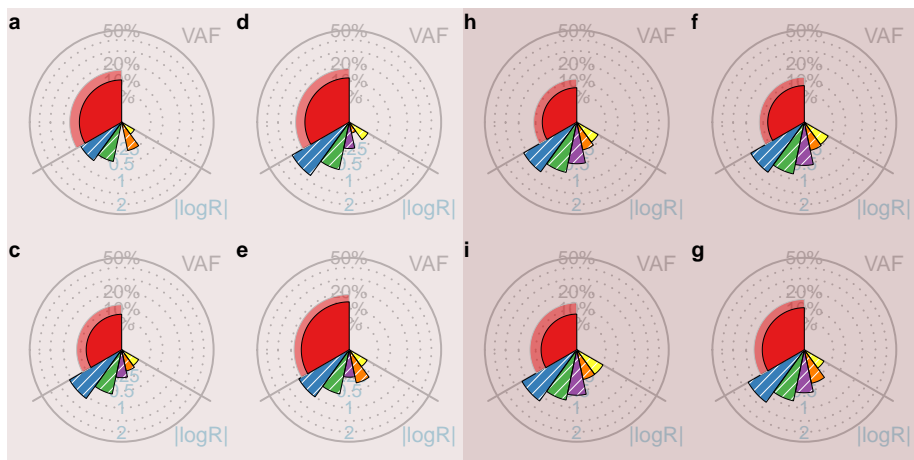
PD9853: ER+/HER2-, G3, pS, P=0.00013, Q=3e-04

2.3 cm



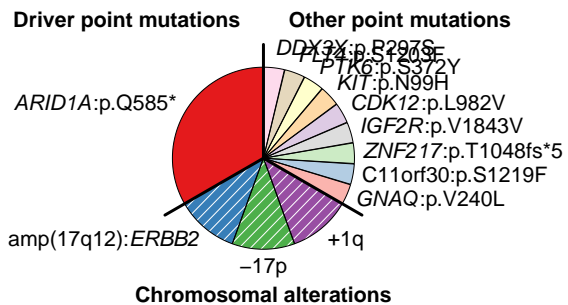
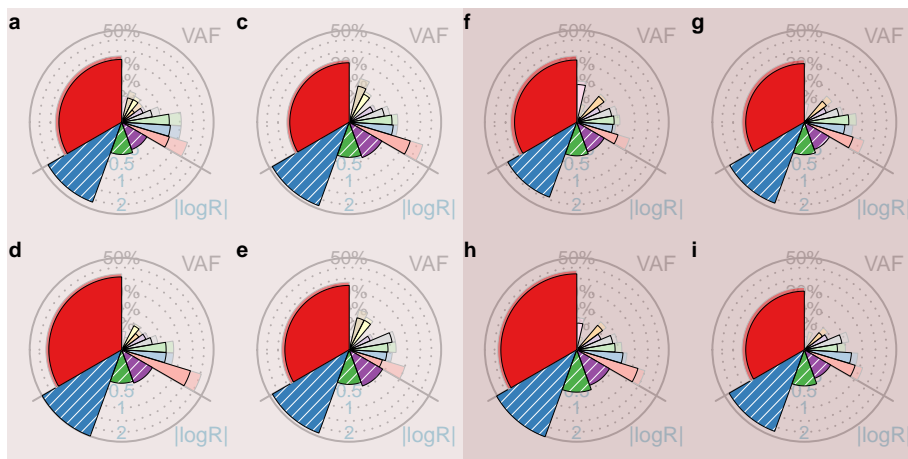
PD9854: ER+/HER2-, G2, pS, P=NA, Q=NA

1.3 cm



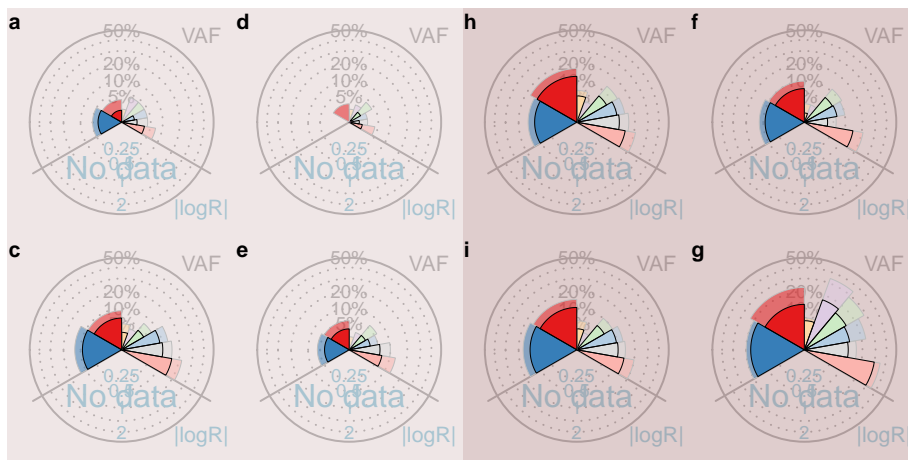
PD12335: HER2+, G2, pS, P=1.1e-33, Q=8.4e-33

4 cm



PD13594: TN, G3, pS, P=0.81, Q=0.88

2 cm



Driver point mutations

FBXW7:p.D109fs*60

TP53:p.L194R

Other point mutations

WT1:p.F244L

FBXW7:p.G9D

SLIT2:p.I287fs*46

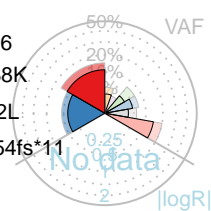
SETD2:p.E1338K

MED12:p.L782L

MAP3K8:p.Y454fs*11

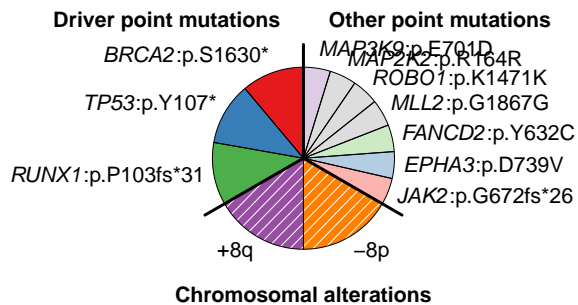
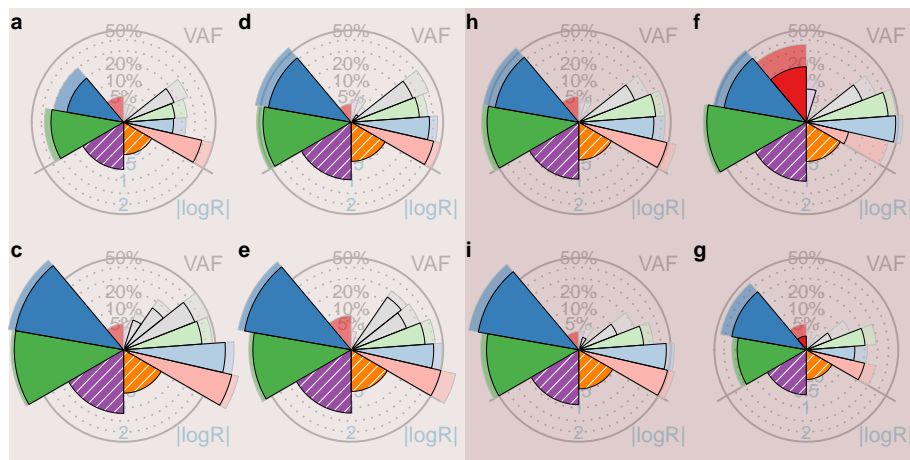
j

Chromosomal alterations



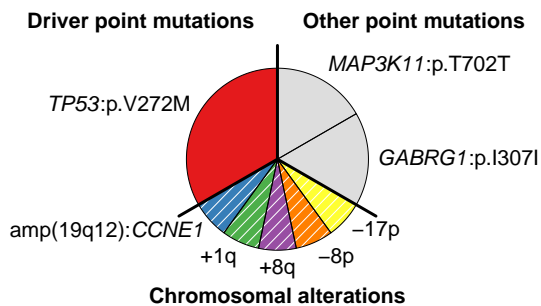
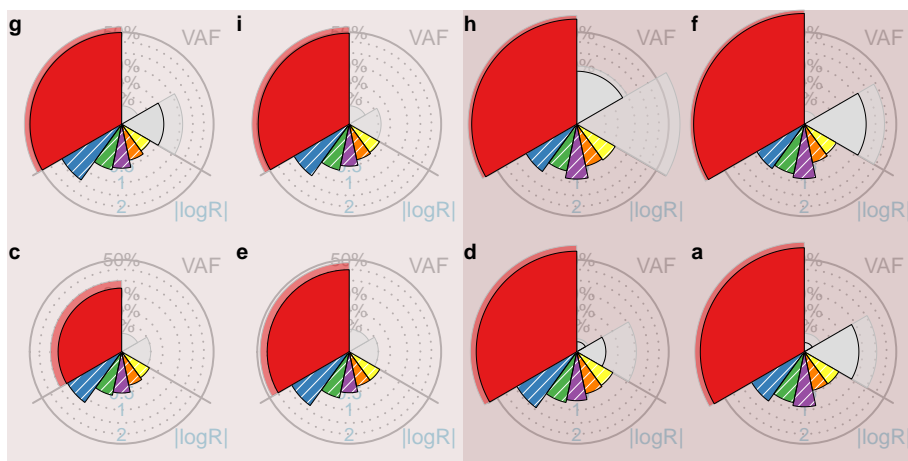
PD13595: ER+/HER2-, G3, pS, P=1.9e-11, Q=9.5e-11

3 cm



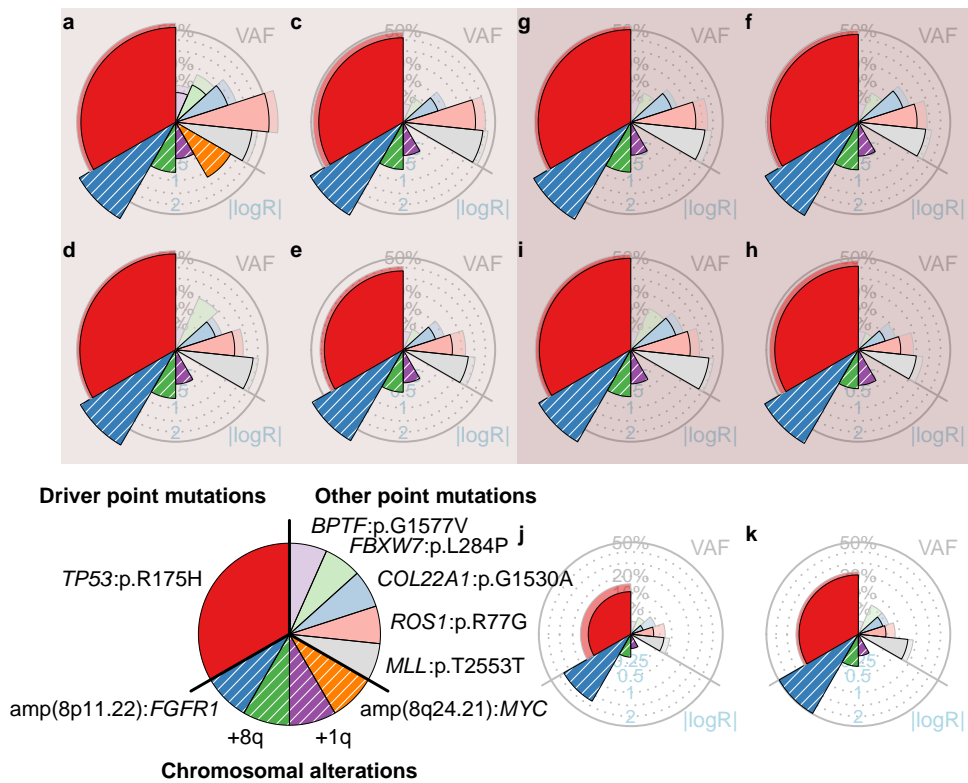
PD14492: ER+/HER2-, G3, pS, P=3.3e-10, Q=1.5e-09

1.5 cm

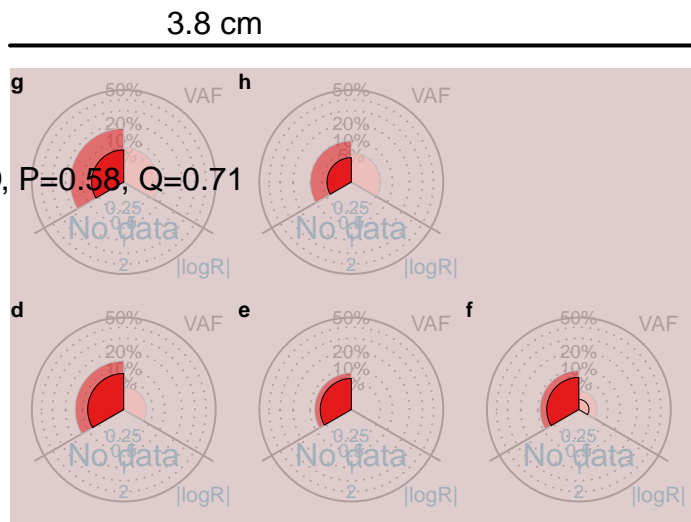
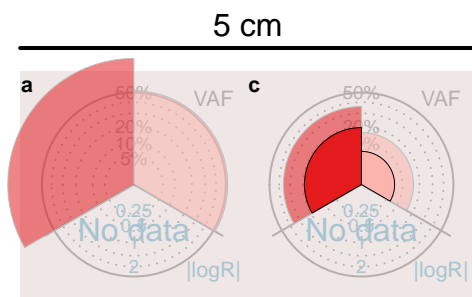


PD14705: ER+/HER2-, G3, pS, P=0.036, Q=0.057

4.5 cm



PD14748: ER+/HER2-, G1, RD, P=0.58, Q=0.71

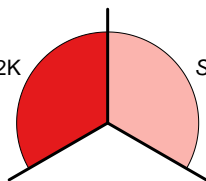


Driver point mutations

Other point mutations

PIK3CA:p.E542K

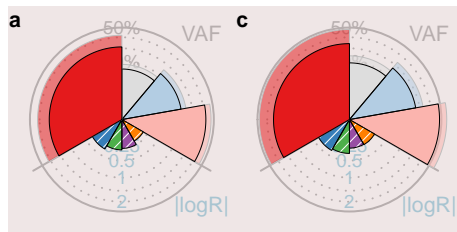
SETD2:p.S299I



Chromosomal alterations

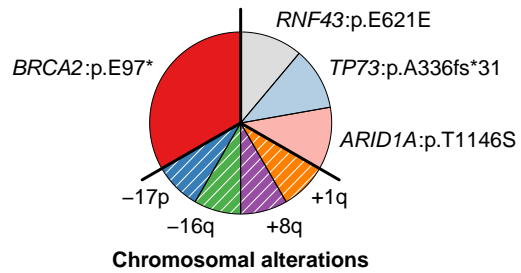
PD14749: ER+/HER2-, G1, RD, P=0.99, Q=1

6 cm



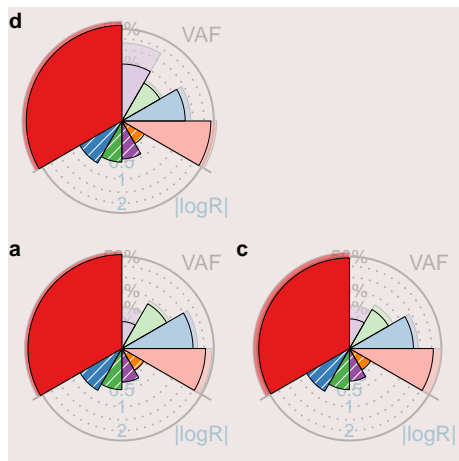
Driver point mutations

Other point mutations



PD14750: TN, G3, pCR, P=0.38, Q=0.52

2 cm



Driver point mutations

TP53:p.F270C

Other point mutations

PIK3R2:p.G676S

MED12L:p.?

MAP3K12:p.R563P

SETD2:p.L2439R

+8q

upd(17p)

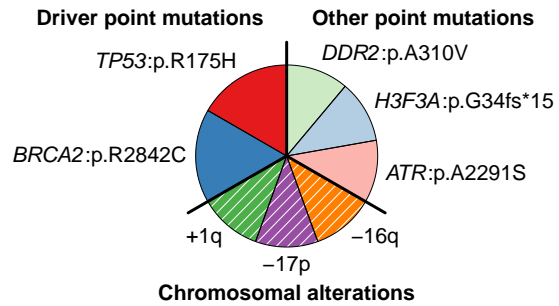
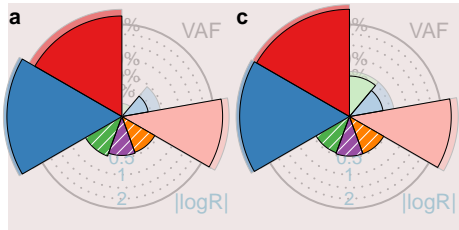
+1q

-8p

Chromosomal alterations

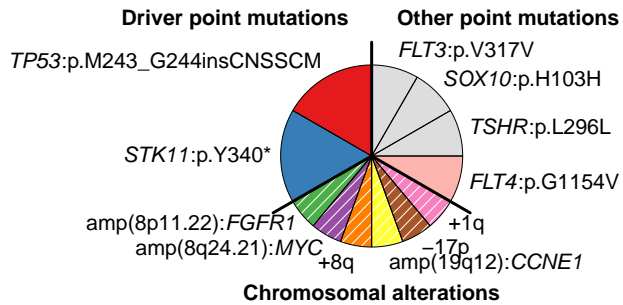
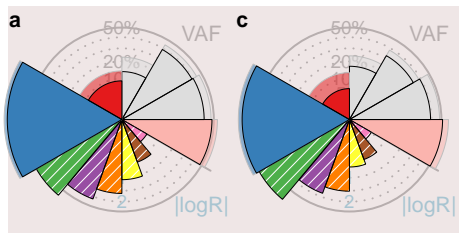
PD14751: TN, G3, RD, P=2.6e-05, Q=7.7e-05

3 cm



PD14754: ER+/HER2-, G3, RD, P=0.59, Q=0.71

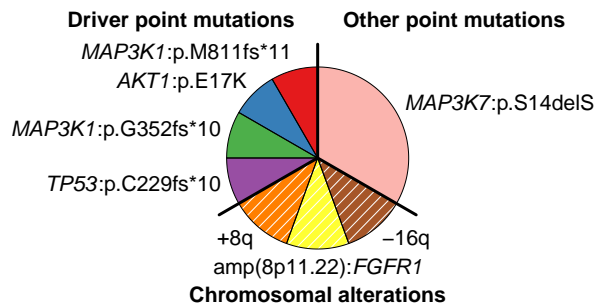
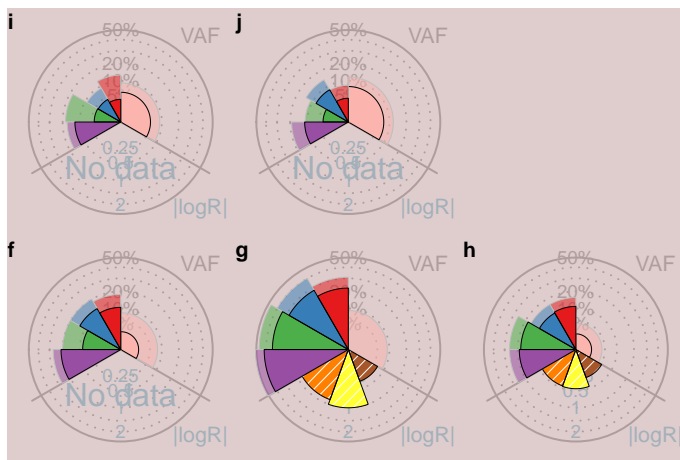
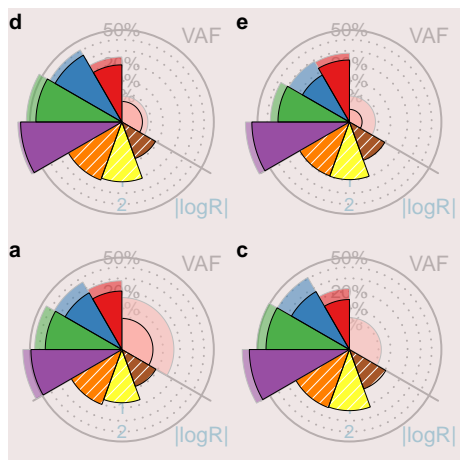
2.4 cm



PD14755: ER+/HER2-, G3, RD, P=0.0027, Q=0.0048

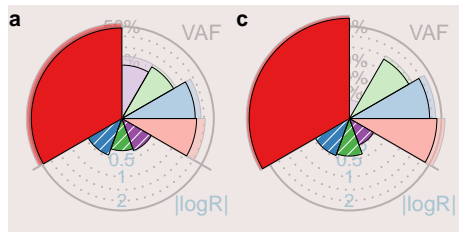
3.2 cm

2.2 cm



PD14756: TN, G3, pCR, P=9e-05, Q=0.00022

3.2 cm



Driver point mutations

TP53:p.V157G

Other point mutations

FGFR4:p.D240N

GNAS:p.P45S

ROBO2:p.R640C

HNF1A:p.P379fs*39

-8p

+8q

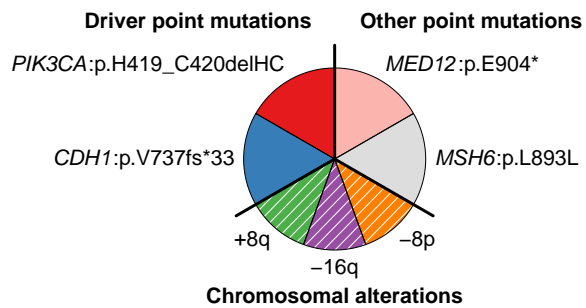
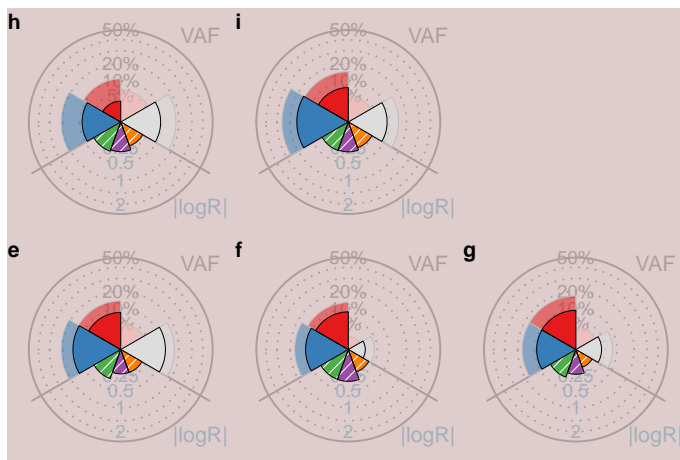
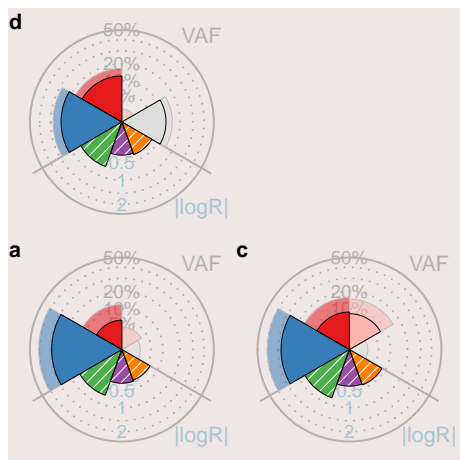
-16q

Chromosomal alterations

PD14757: ER+/HER2-, G1, RD, P=5.9e-05, Q=0.00016

4 cm

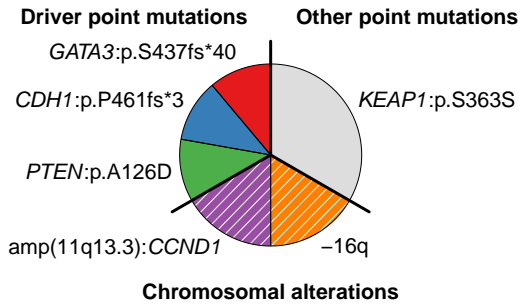
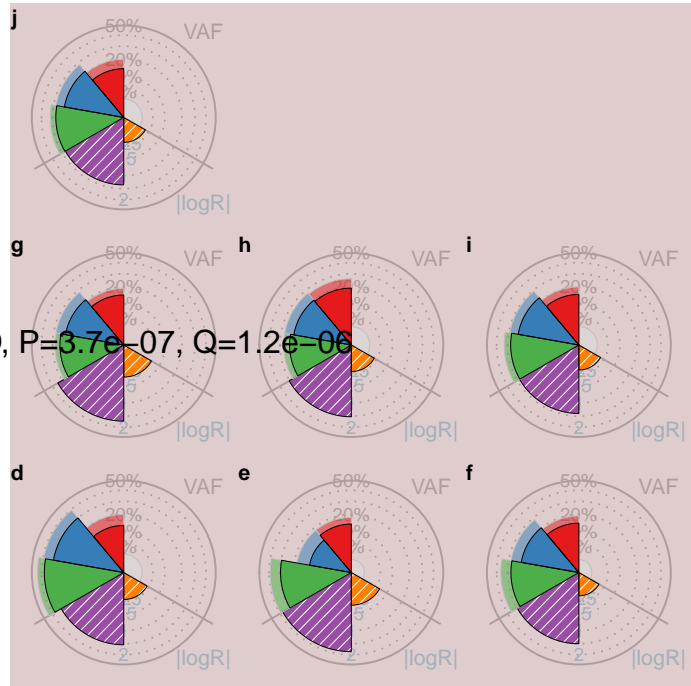
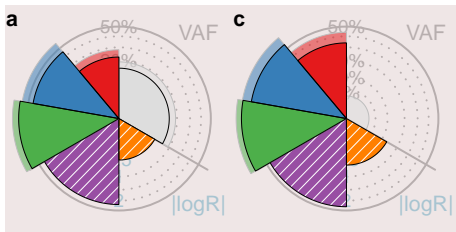
5.4 cm



6 cm

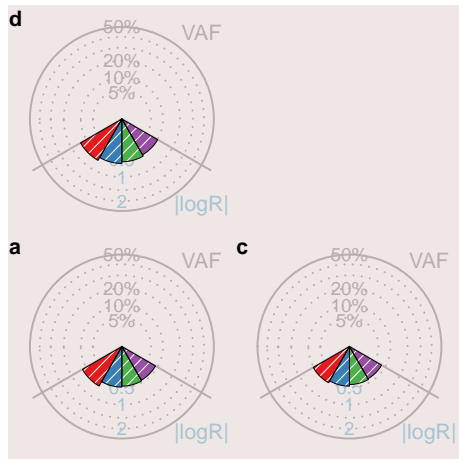
PD14758: ER+/HER2-, G2, RD, $P=3.7e-07$, $Q=1.2e-06$

5.5 cm

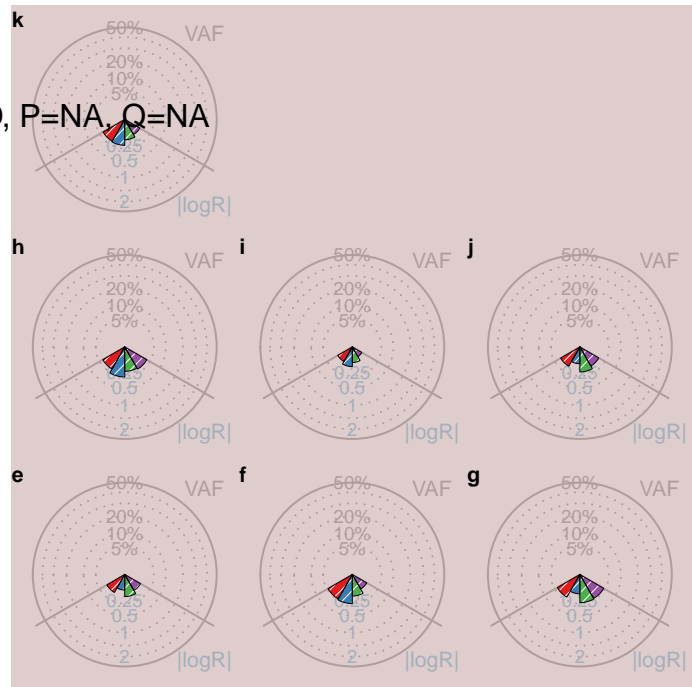


PD14759: ER+/HER2-, G2, RD, P=NA, Q=NA

8 cm

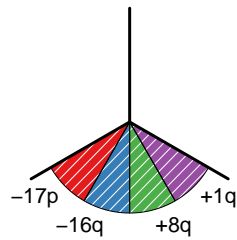


5.7 cm



Driver point mutations

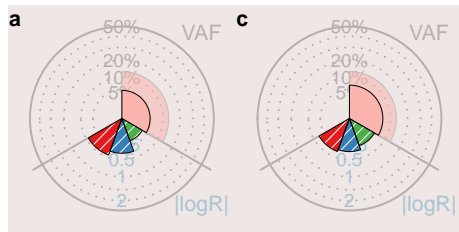
Other point mutations



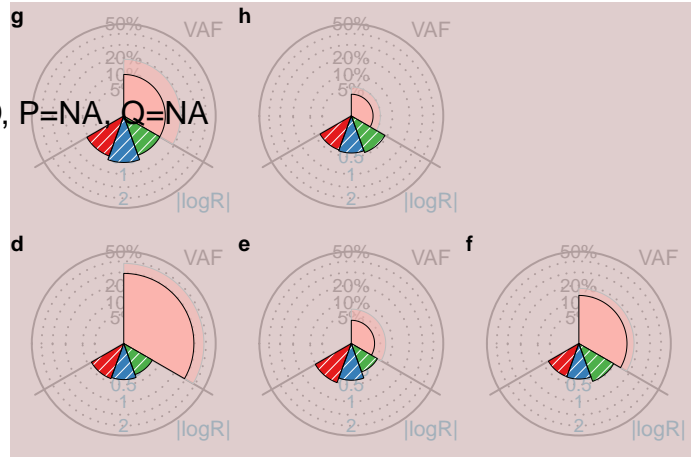
Chromosomal alterations

PD14760: ER+/HER2-, G2, RD, P=NA, Q=NA

2.8 cm

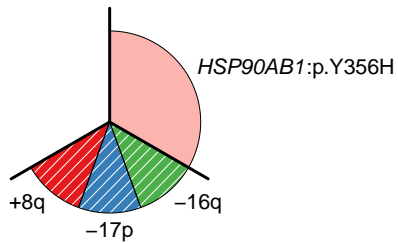


2.2 cm



Driver point mutations

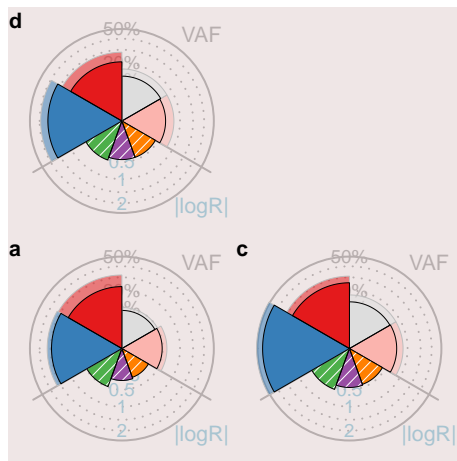
Other point mutations



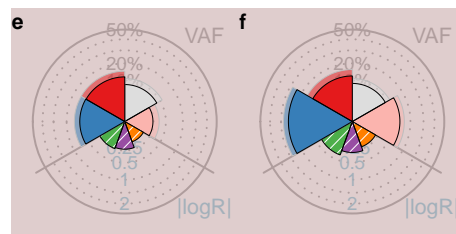
Chromosomal alterations

PD14761: ER+/HER2-, G1, RD, P=0.17, Q=0.25

6 cm

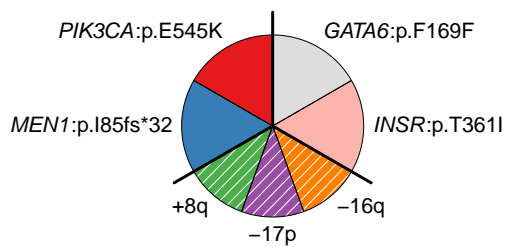


6.5 cm



Driver point mutations

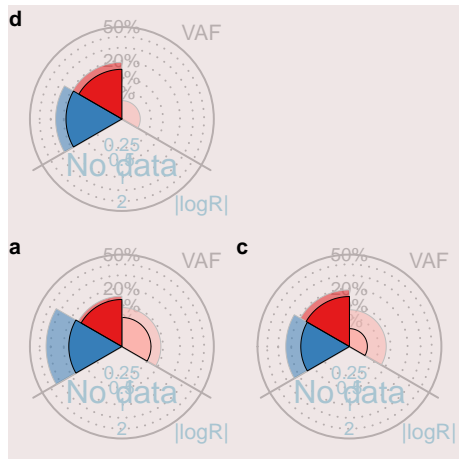
Other point mutations



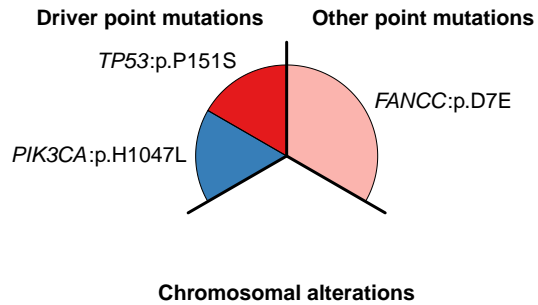
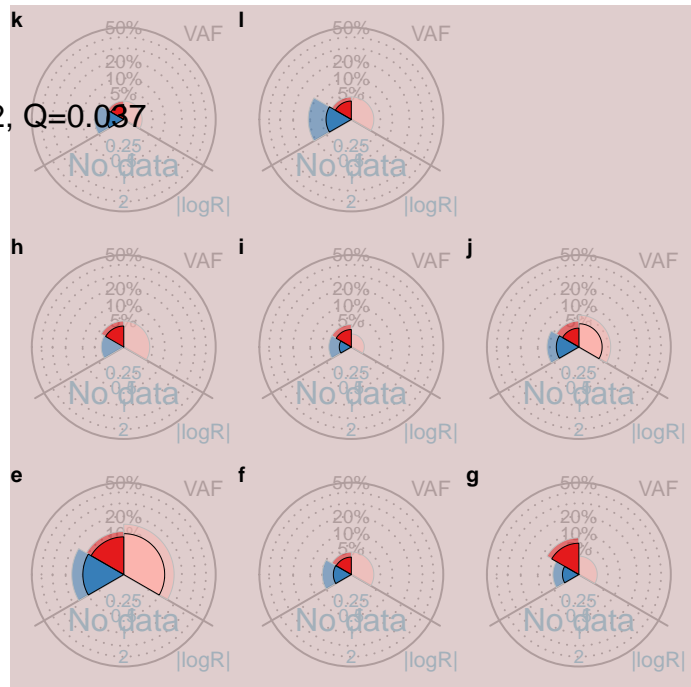
Chromosomal alterations

PD14762: TN, G2, RD, P=0.022, Q=0.037

3.1 cm



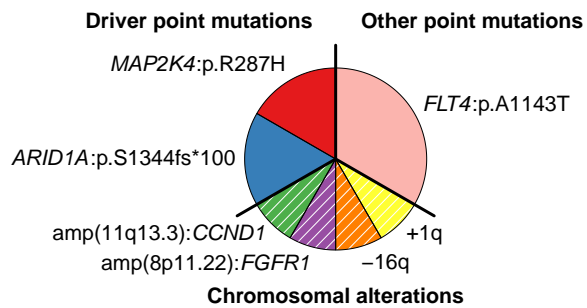
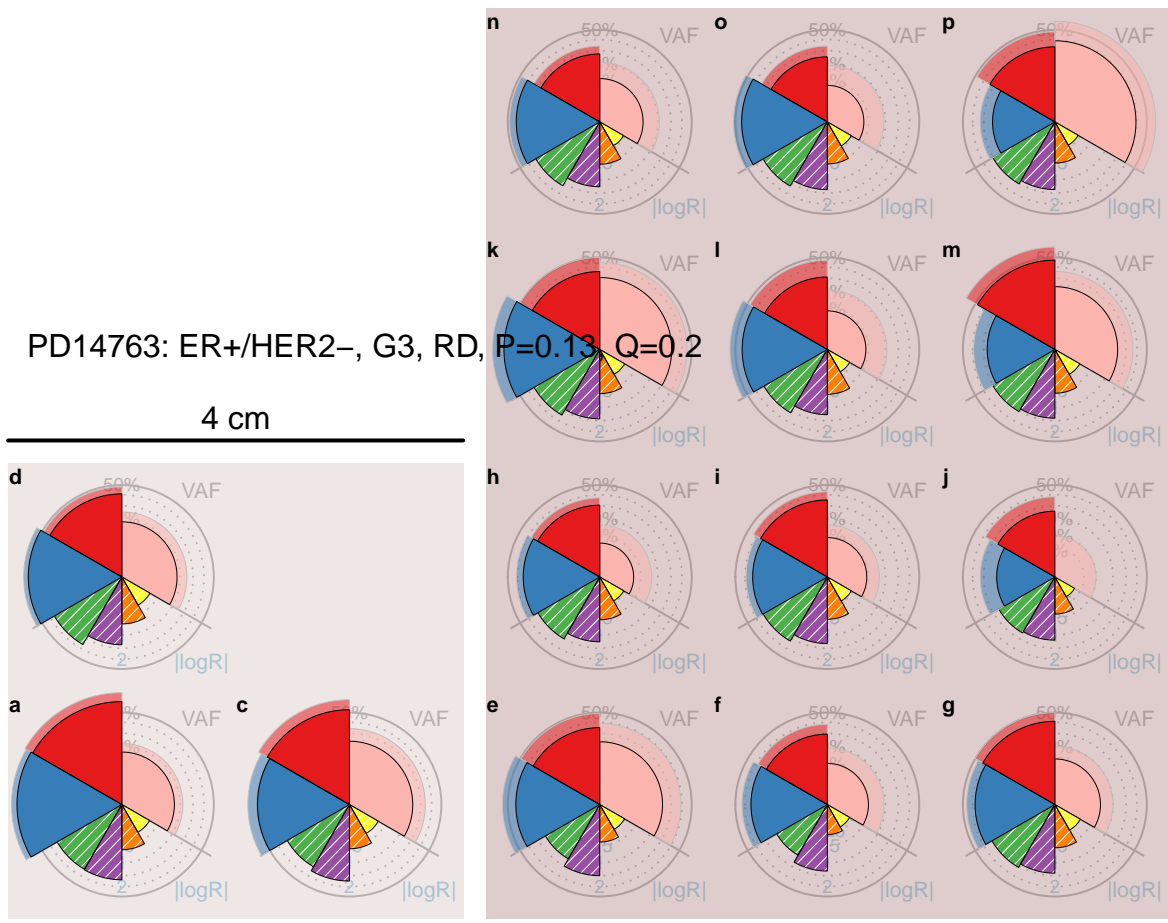
3 cm



2.4 cm

PD14763: ER+/HER2-, G3, RD, P=0.13, Q=0.2

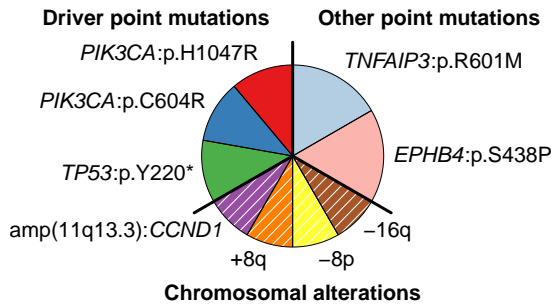
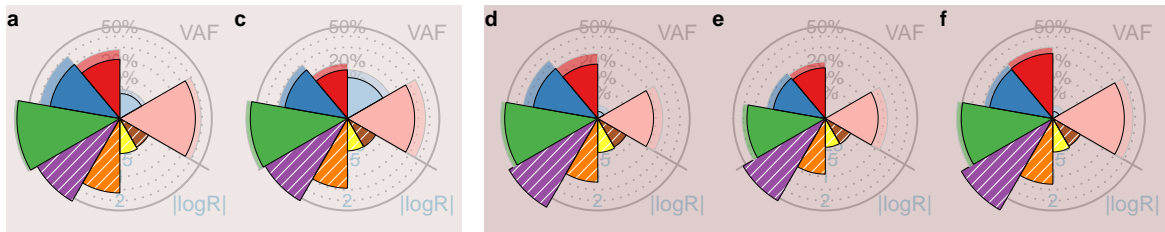
4 cm



PD14765: ER+/HER2-, G3, RD, P=0.00023, Q=0.00047

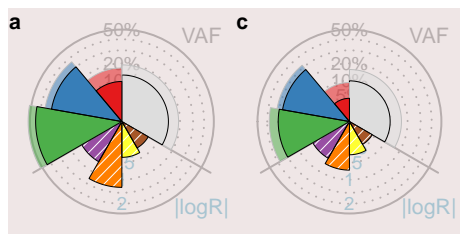
7.2 cm

2 cm

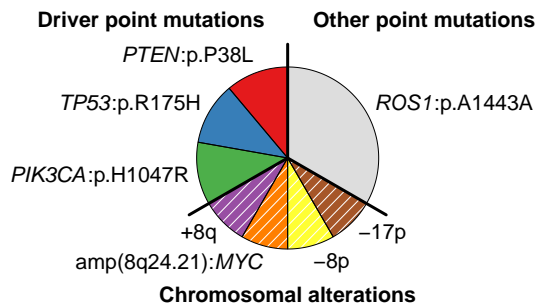
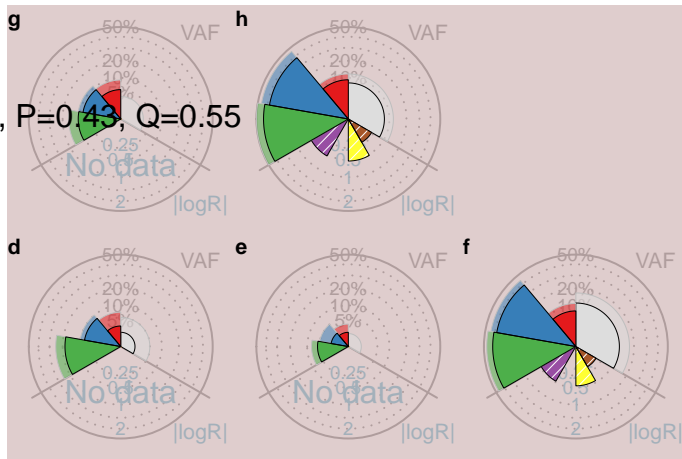


PD14767: ER+/HER2-, G3, RD, P=0.43, Q=0.55

3.2 cm

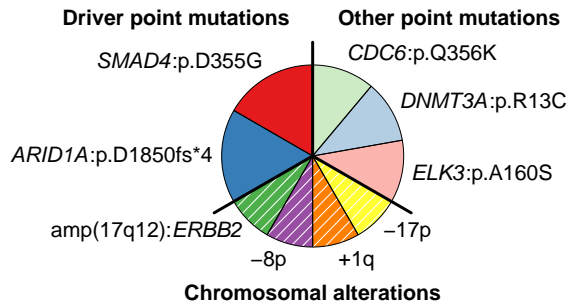
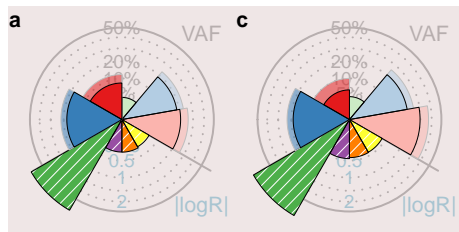


3 cm



PD14769: HER2+, G2, pCR, P=0.75, Q=0.85

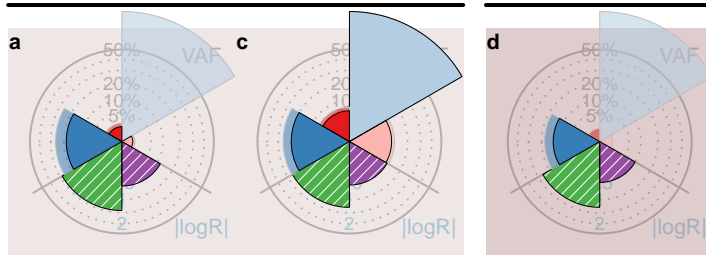
6 cm



PD14770: HER2+, G3, RD, P=5.6e-05, Q=0.00016

2.8 cm

1.4 cm



Driver point mutations

Other point mutations

TNFAIP3:p.E374*

NOTCH2:p.?

PIK3CA:p.H1047R

SHC1:p.S102*

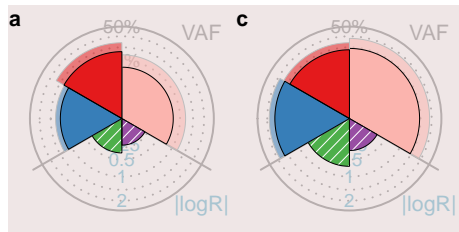
amp(17q12):*ERBB2*

+8q

Chromosomal alterations

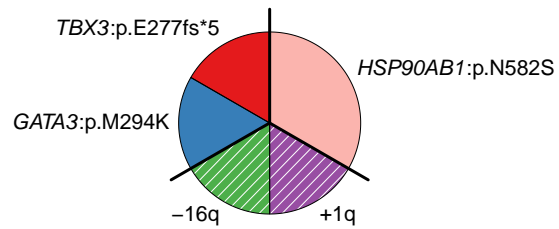
PD14771: ER+/HER2-, G2, RD, P=0.41, Q=0.54

4 cm



Driver point mutations

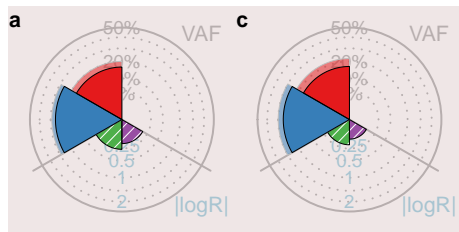
Other point mutations



Chromosomal alterations

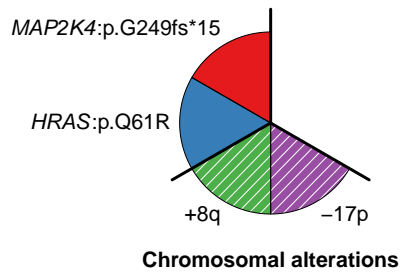
PD14773: TN, G2, RD, P=0.92, Q=0.97

2.5 cm



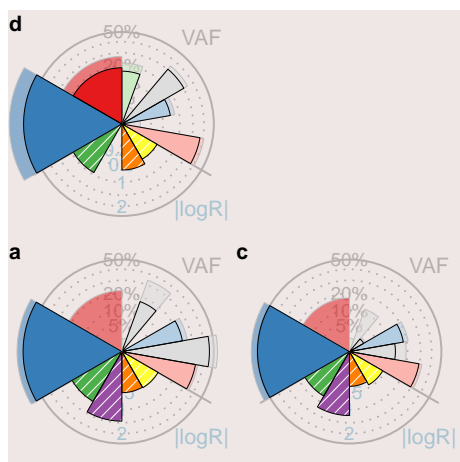
Driver point mutations

Other point mutations



PD14774: TN, G3, pCR, P=2.5e-53, Q=2.8e-52

2.7 cm



Driver point mutations

DICER1:p.K376fs*4

TP53:p.W91fs*32

+8q
amp(8q24.21):*MYC*

Other point mutations

BRAF:p.G10R

DICER1:p.R944R

ARID1B:p.P1231P

PREX2:p.Q1588K

HSP90AB1:p.T309T

TSC2:p.S609I

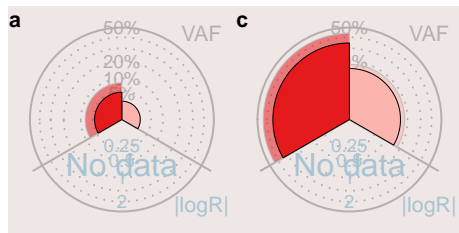
Chromosomal alterations

-17p

-8p

PD14775: ER+/HER2-, G3, pCR, P=0.68, Q=0.8

4 cm

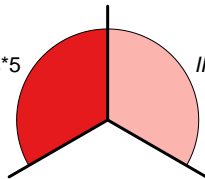


Driver point mutations

Other point mutations

TP53:p.R342fs*5

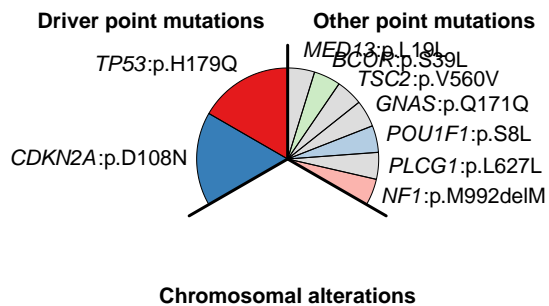
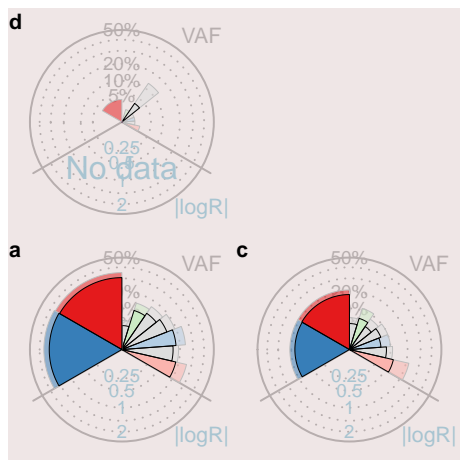
IRS2:p.T1221A



Chromosomal alterations

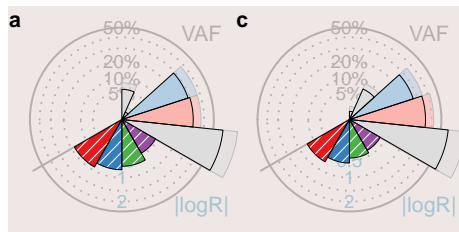
PD14776: TN, G3, RD, P=0.82, Q=0.88

2.4 cm



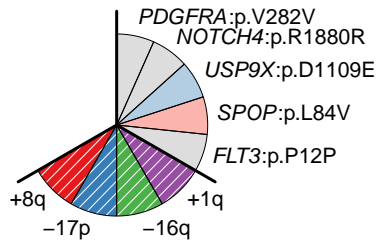
PD14779: ER+/HER2-, G2, RD, P=1e-04, Q=0.00024

3 cm



Driver point mutations

Other point mutations



Chromosomal alterations