

Gene: **Wdr47**

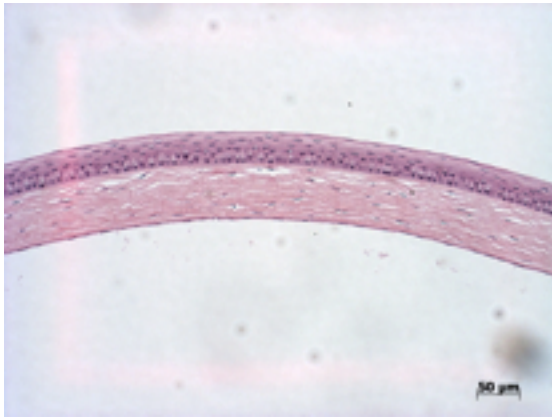
Genotype **-/-**

Sanger Colony: MANY

---

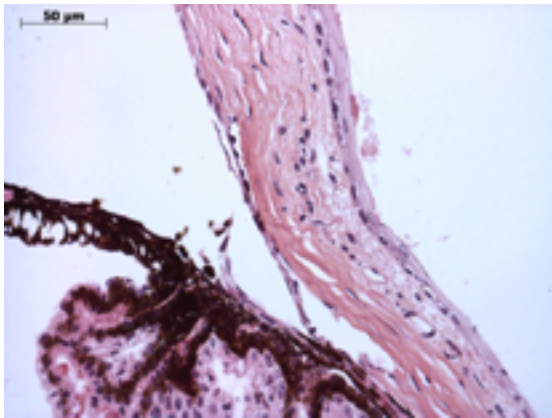
**Abnormal Findings:** None.

## EYE Phenotype



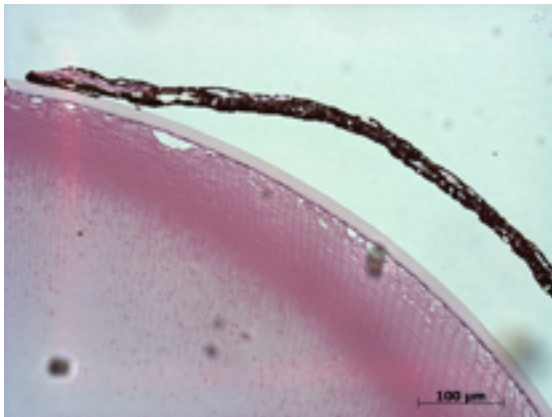
### Cornea:

**2/2.** Normal corneal epithelium, stroma, and endothelium. There is a tissue fragment on the epithelial surface (nonspecific).



### Anterior chamber:

**2/2.** The anterior chamber was of normal depth without cells, and the angle appeared open.



### Iris:

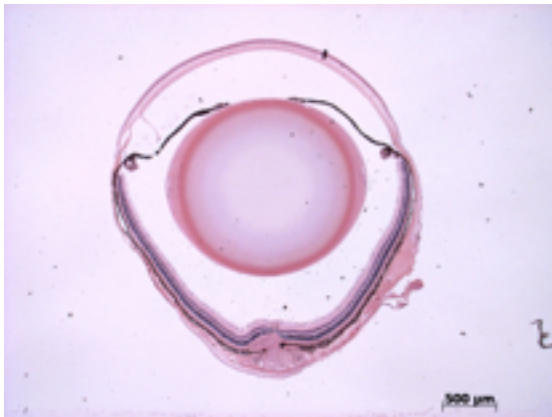
**2/2.** The iris showed normal pigmentation without rubeosis or pupillary membranes.

Gene: **Wdr47**

Genotype **-/-**

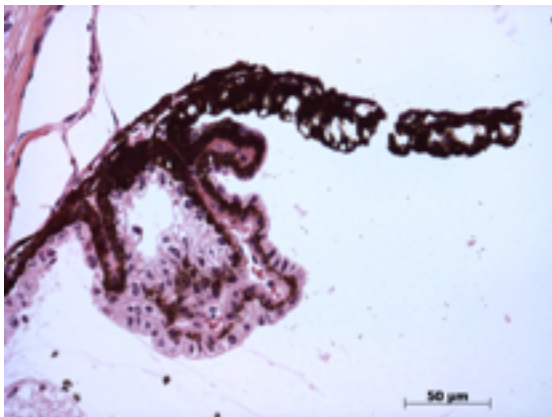
Sanger Colony: MANY

---



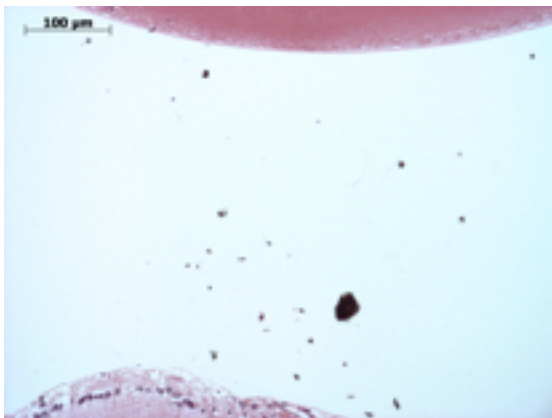
**Lens:**

**2/2.** No cataract was observed.



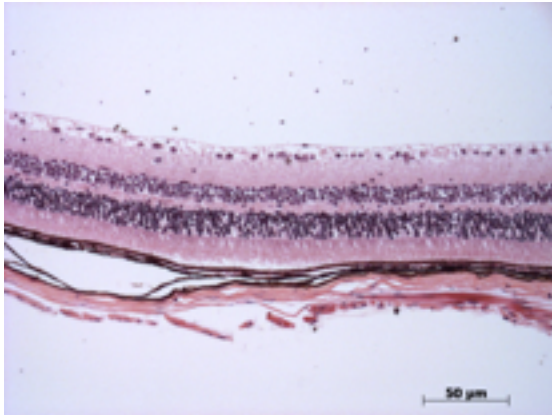
**Ciliary body:**

**2/2.** Normal stroma, pigmented and nonpigmented layers were present along with cilia.



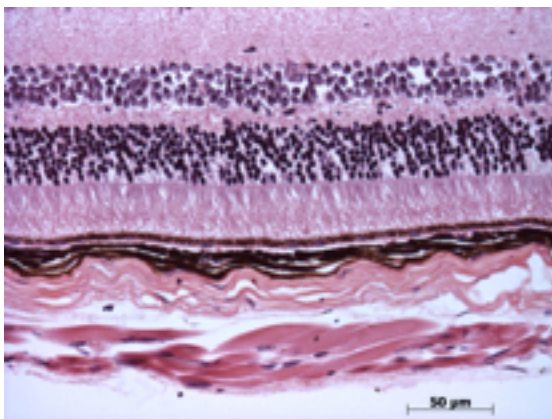
**Vitreous:**

**2/2.** No abnormal opacities or cells.



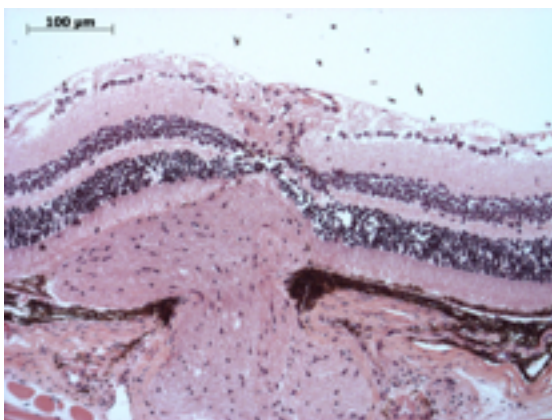
**Retina:**

**2/2.** The retinal ganglion, inner nuclear and photoreceptor layers are normal.



**Retinal pigment epithelium and Choroid:**

**2/2.** Normal pigmentation. Bruch's membrane is intact. No neovascular membranes were noted.



**Optic Nerve:**

**2/2.** The nerve is normal.

**Methods.** 2 eyes from 1 male mice were enucleated by blunt dissection and fixed. Pupil-optic nerve sections were processed with hematoxylin and eosin, and standard images were captured under light microscopy for review.