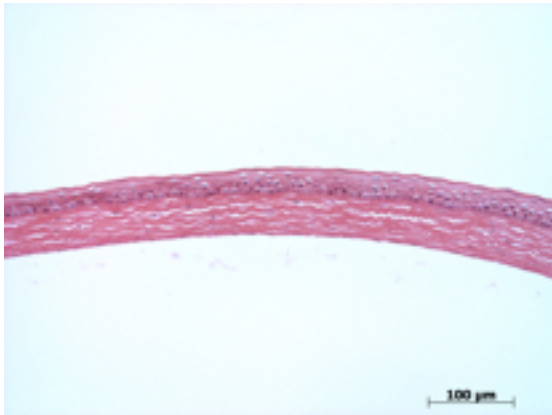


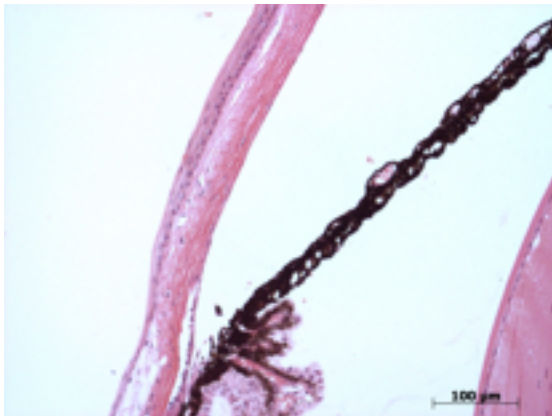
Abnormal Findings: None.

## EYE Phenotype



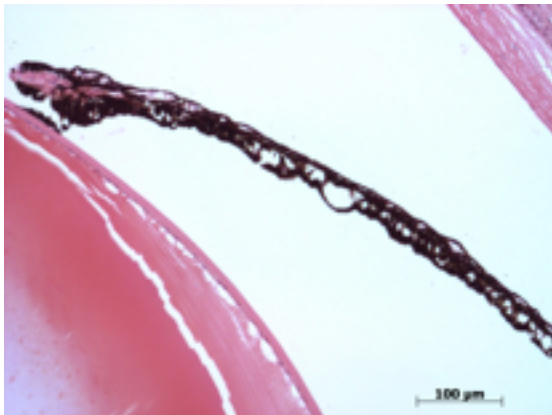
### Cornea:

4/4. Normal corneal epithelium, stroma, and endothelium.



### Anterior chamber:

4/4. The anterior chamber was of normal depth without cells, and the angle appeared open.



### Iris:

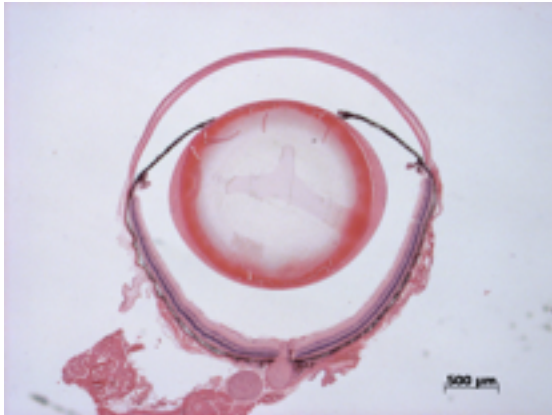
4/4. The iris showed normal pigmentation without rubeosis or pupillary membranes.

Gene: Ppp2r2b

Genotype -/-

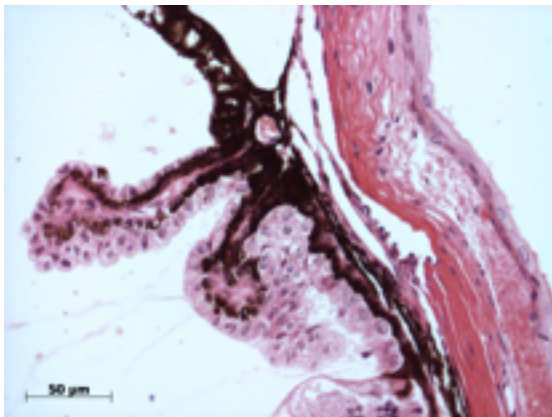
Sanger Colony: MASL

---



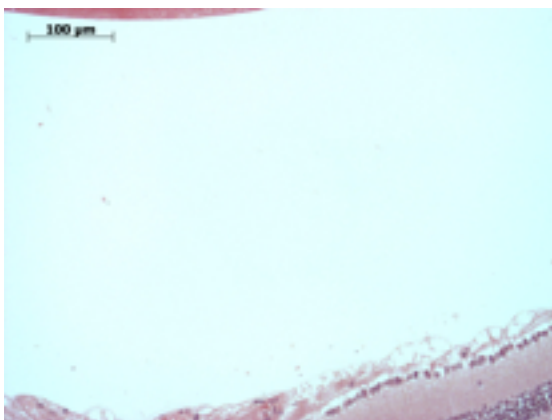
**Lens:**

4/4. No cataract was observed.



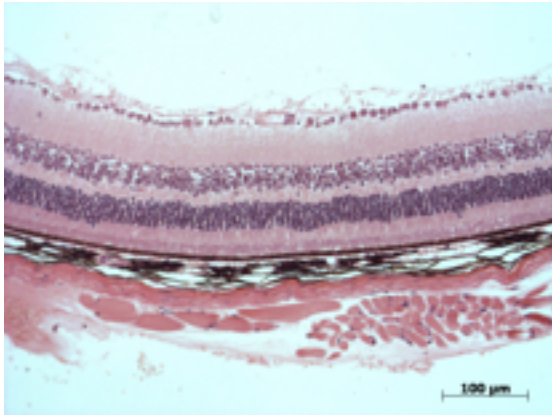
**Ciliary body:**

4/4. Normal stroma, pigmented and nonpigmented layers were present along with cilia.



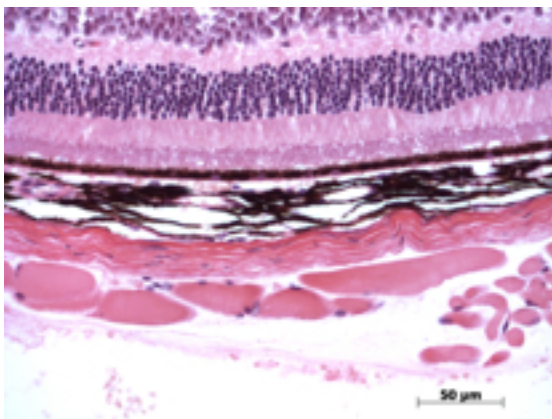
**Vitreous:**

4/4. No abnormal opacities or cells.



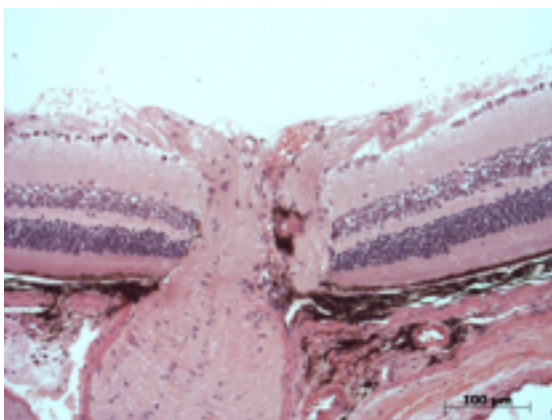
**Retina:**

**4/4.** The retinal ganglion, inner nuclear and photoreceptor layers are normal.



**Retinal pigment epithelium and Choroid:**

**4/4.** Normal pigmentation. Bruch's membrane is intact. No neovascular membranes were noted.



**Optic Nerve:**

**4/4.** The nerve is normal.

**Methods.** 6 eyes from 3 male mice were enucleated by blunt dissection and fixed. Pupil-optic nerve sections were processed with hematoxylin and eosin, and standard images were captured under light microscopy for review.