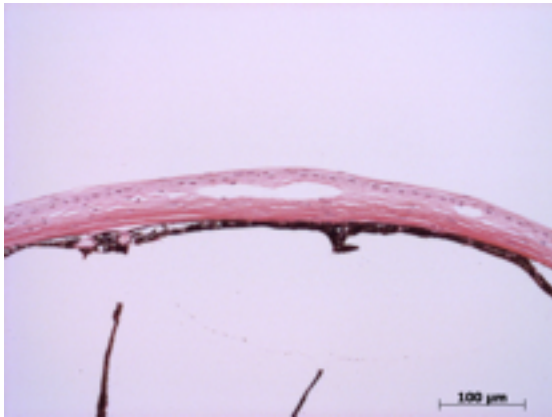


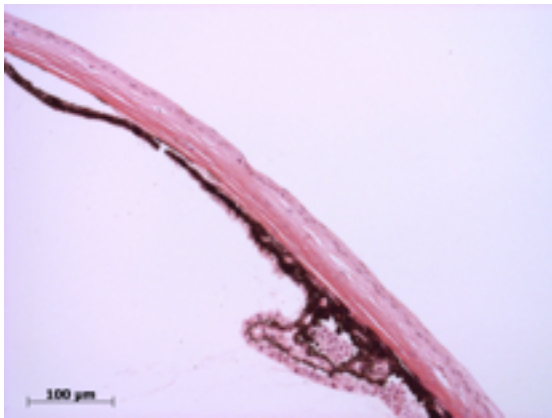
Abnormal Findings: Missing lens, abnormal cornea, iris, ciliary body, retina.

EYE Phenotype



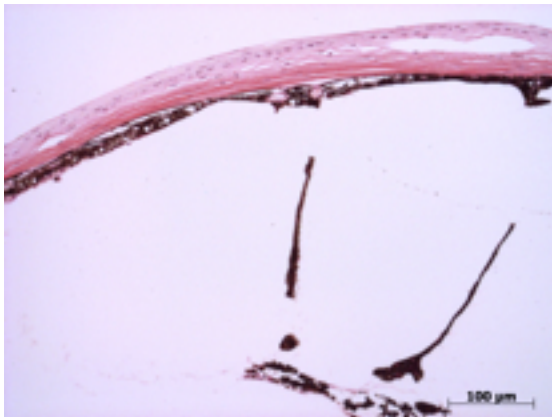
Cornea:

2/6. The cornea is thin with separations below the epithelium and within the stroma.



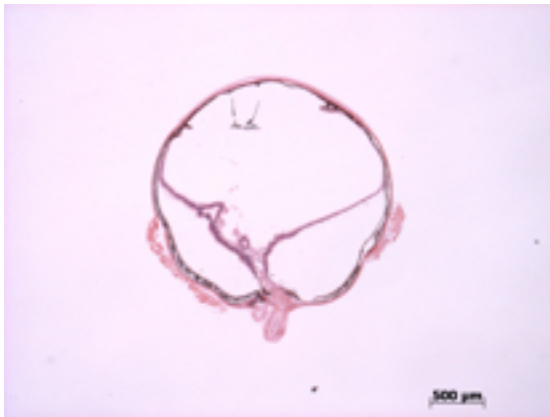
Anterior chamber:

2/6. The anterior chamber is closed.



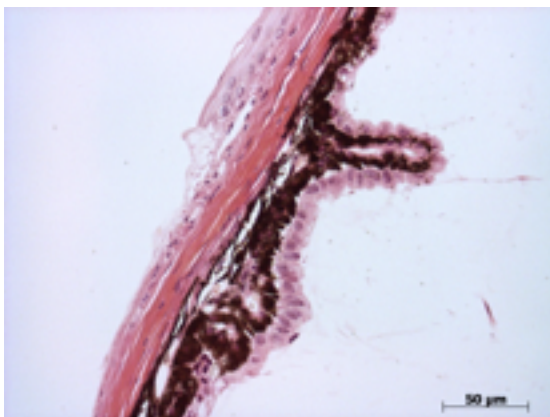
Iris:

2/6. The iris is fused to the cornea.



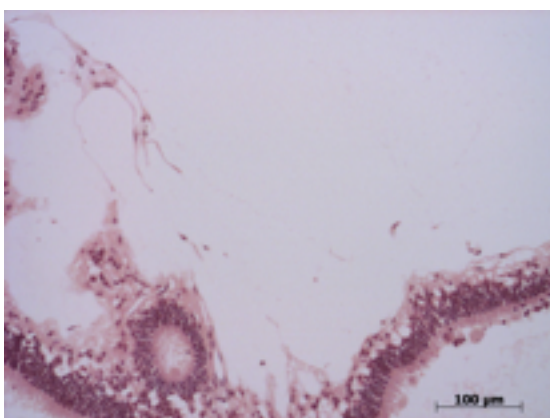
Lens:

2/6. The lens is absent.



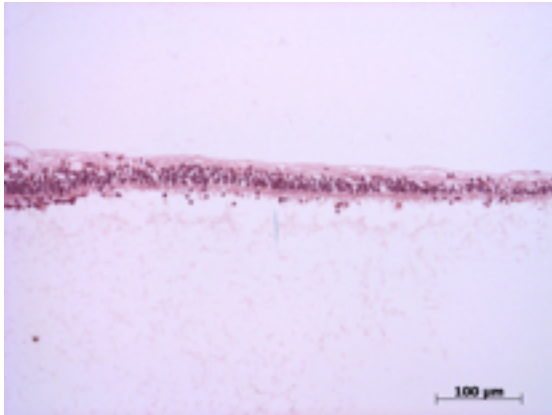
Ciliary body:

2/6. The ciliary body is small and does not show normal cilia.



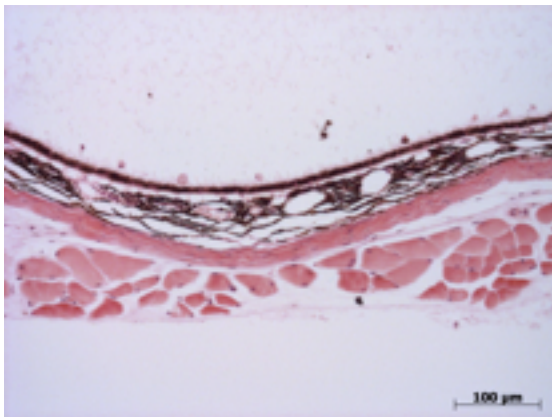
Vitreous:

2/6. No abnormal opacities or cells.



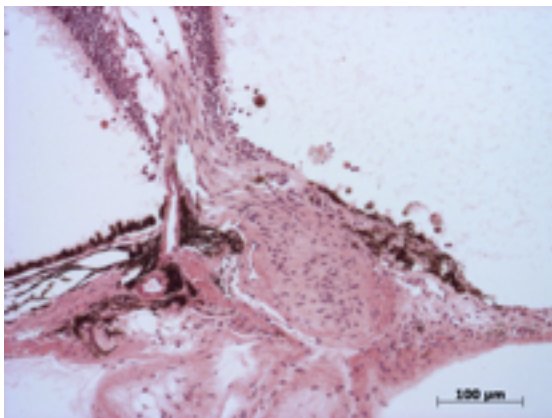
Retina:

2/6. The retina is detached and missing the inner retinal layers or severely disorganized. There are pigmented cells in the subretinal space.



Retinal pigment epithelium and Choroid:

2/6. The RPE is disorganized and occasionally shows an extra layer.



Optic Nerve:

2/6. The nerve is normal.

Methods. 6 eyes from 3 male mice were enucleated by blunt dissection and fixed. Pupil-optic nerve sections were processed with hematoxylin and eosin, and standard images were captured under light microscopy for review.