

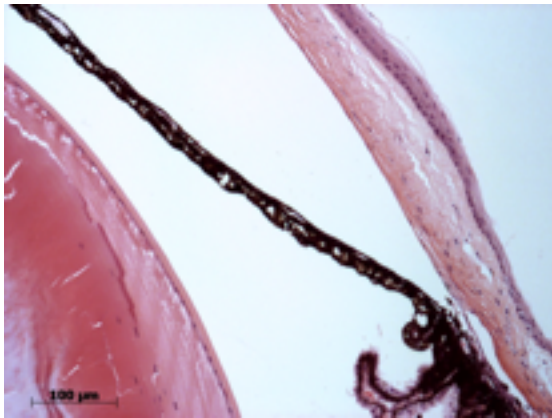
**Abnormal Findings:** None.

## EYE Phenotype



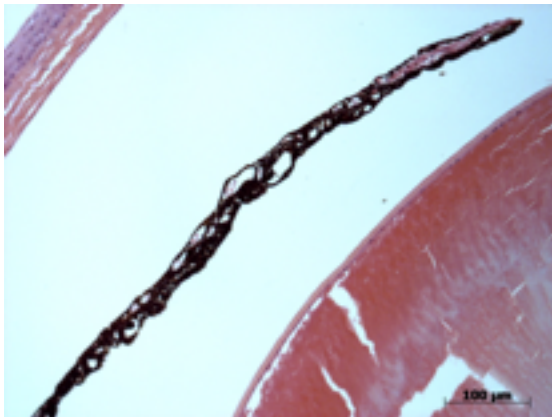
### Cornea:

**4/4.** Normal corneal epithelium, stroma, and endothelium.



### Anterior chamber:

**4/4.** The anterior chamber was of normal depth without cells, and the angle appeared open.



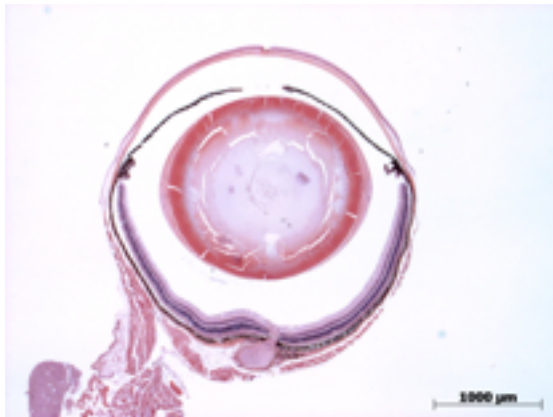
### Iris:

**4/4.** The iris showed normal pigmentation without rubeosis or pupillary membranes.

Gene: **Fam73b (5730472N09Rik)** Genotype **-/-**

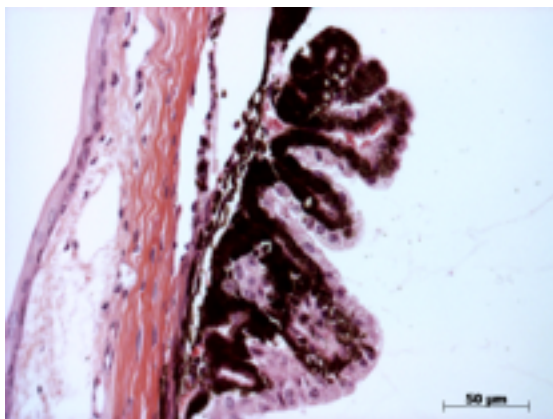
Sanger Colony: MBDR

---



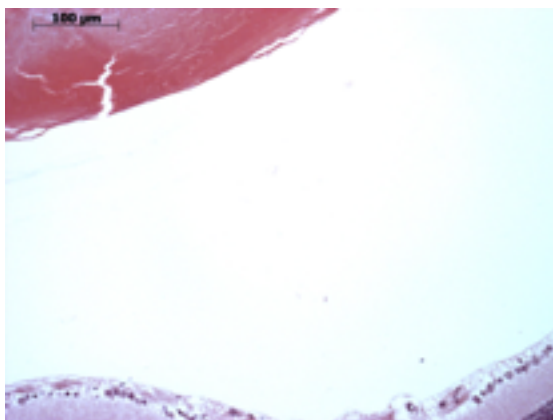
**Lens:**

**4/4.** No cataract was observed.



**Ciliary body:**

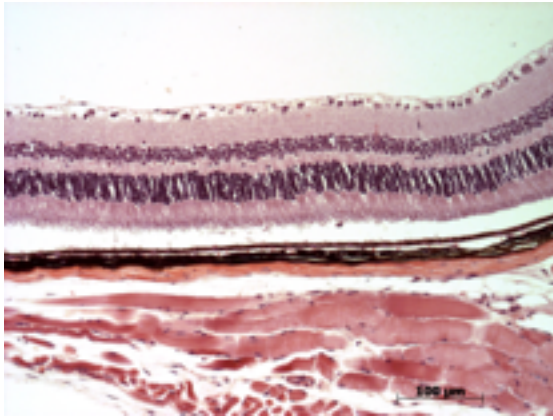
**4/4.** Normal stroma, pigmented and nonpigmented layers were present along with cilia.



**Vitreous:**

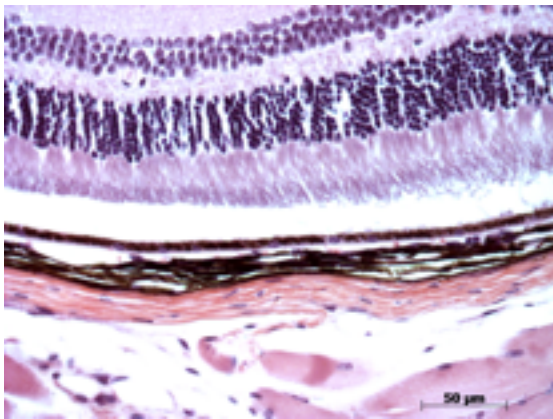
**4/4.** No abnormal opacities or cells.

Sanger Colony: MBDR



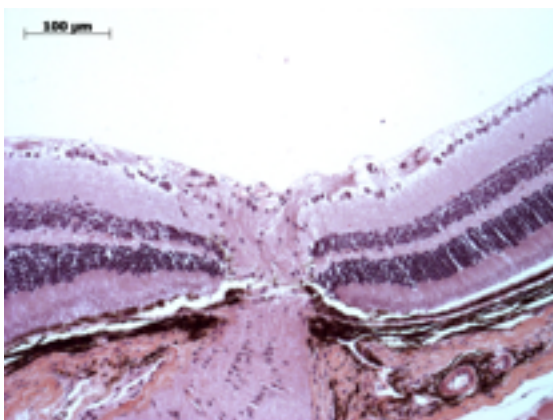
**Retina:**

**4/4.** The retinal ganglion, inner nuclear and photoreceptor layers are normal.



**Retinal pigment epithelium and Choroid:**

**4/4.** Normal pigmentation. Bruch's membrane is intact. No neovascular membranes were noted.



**Optic Nerve:**

**4/4.** The nerve is normal.

**Methods.** 4 eyes from 2 male mice were enucleated by blunt dissection and fixed. Pupil-optic nerve sections were processed with hematoxylin and eosin, and standard images were captured under light microscopy for review.