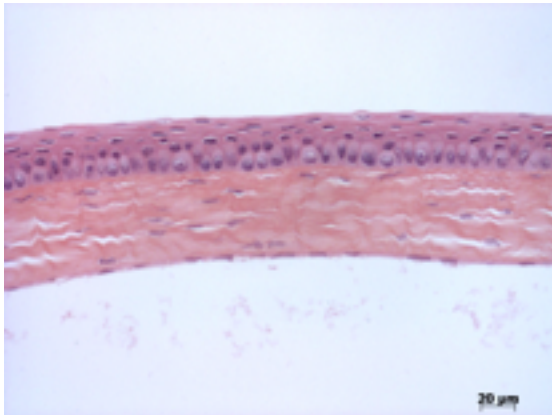


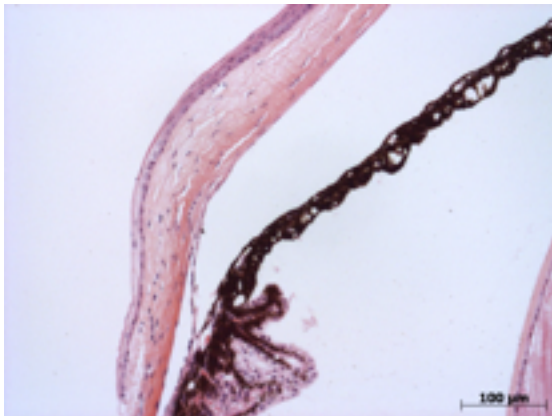
Abnormal Findings: None.

EYE Phenotype



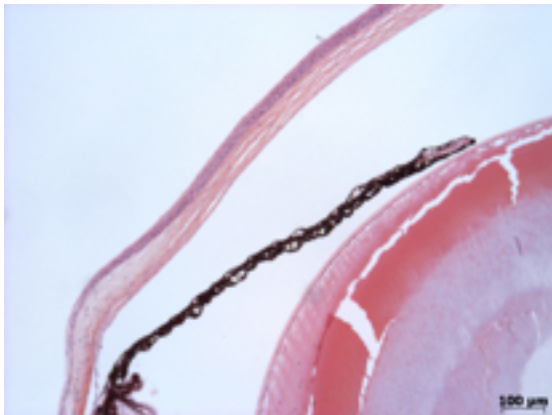
Cornea:

5/5. Normal corneal epithelium, stroma, and endothelium.



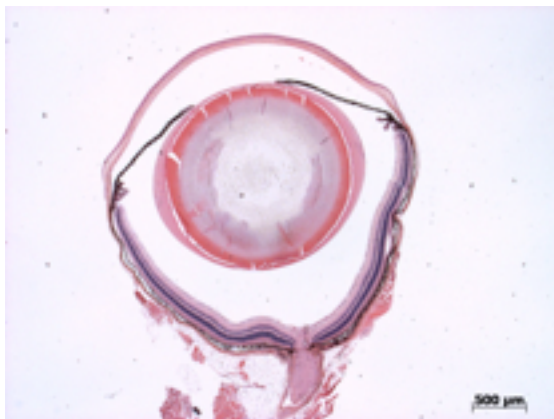
Anterior chamber:

5/5. The anterior chamber was of normal depth without cells, and the angle appeared open.



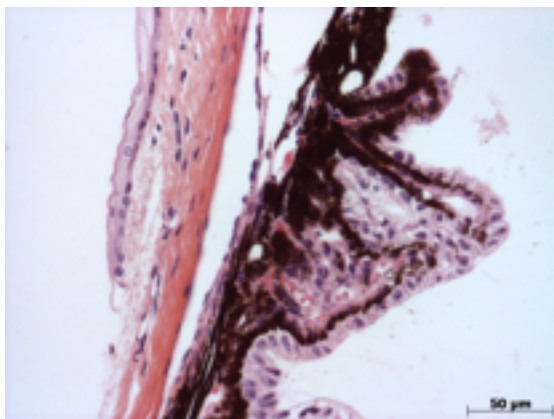
Iris:

5/5. The iris showed normal pigmentation without rubeosis or pupillary membranes.



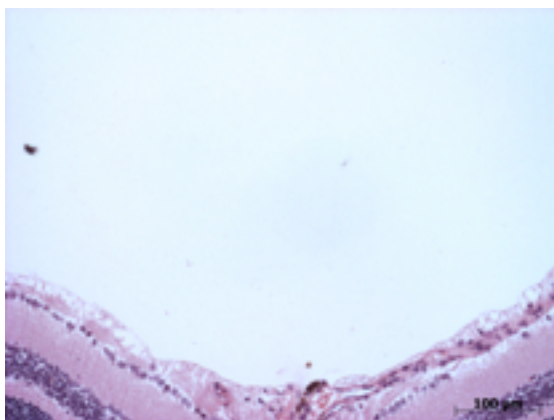
Lens:

5/5. No cataract was observed.



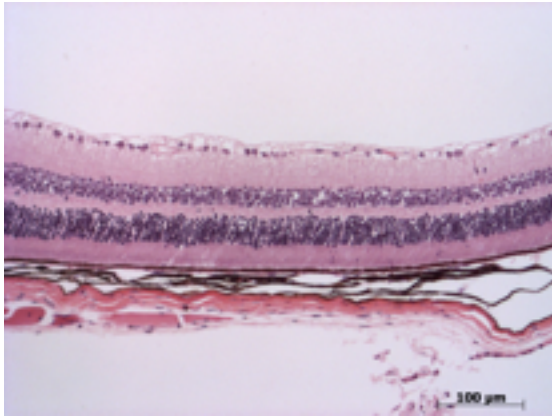
Ciliary body:

5/5. Normal stroma, pigmented and nonpigmented layers were present along with cilia.



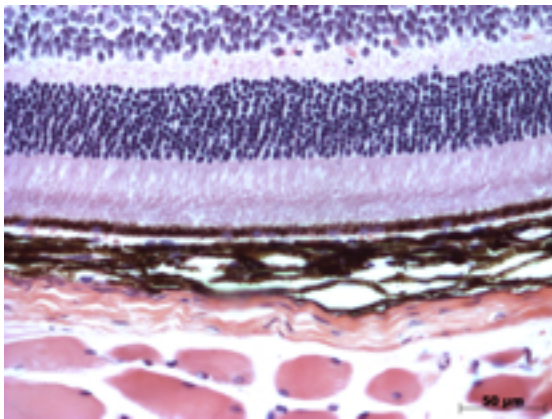
Vitreous:

5/5. No abnormal opacities or cells.



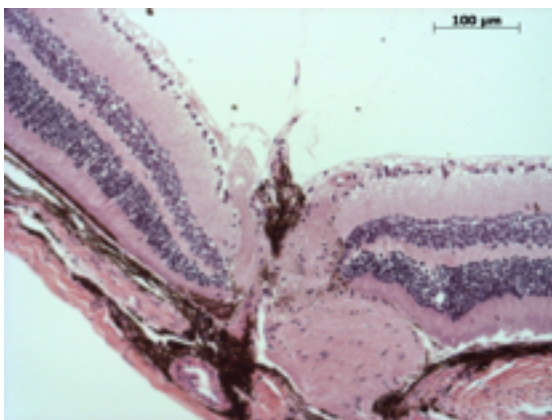
Retina:

5/5. The retinal ganglion, inner nuclear and photoreceptor layers are normal.



Retinal pigment epithelium and Choroid:

5/5. Normal pigmentation. Bruch's membrane is intact. No neovascular membranes were noted.



Optic Nerve:

5/5. The nerve is normal.

Methods. 5 eyes from 3 male mice were enucleated by blunt dissection and fixed. Pupil-optic nerve sections were processed with hematoxylin and eosin, and standard images were captured under light microscopy for review.