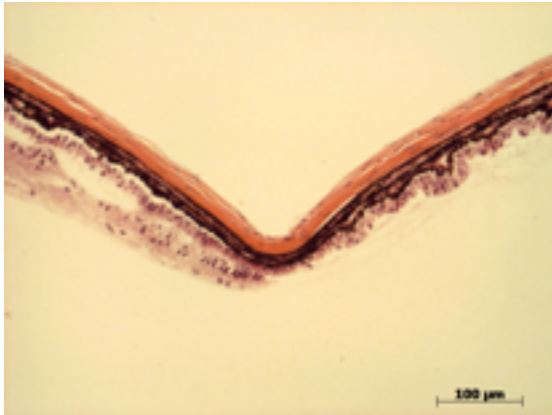


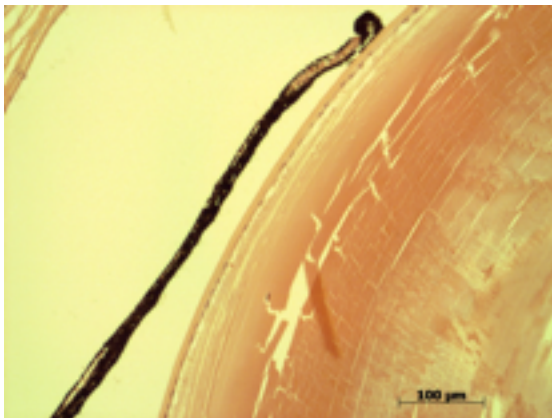
**Abnormal Findings:** The lens was small or missing in two eyes (MP:0003078, MP:0001306), small ciliary body and absent iris in one eye (MP:0006226),

## EYE Phenotype



### Cornea:

**1/6.** The cornea is thin.



### Iris:

**1/6.** In one eye the iris was absent. The iris showed normal pigmentation without rubeosis or pupillary membranes.



### Lens:

**2/6.** One lens was missing (shown), One lens was small. No cataract was observed.

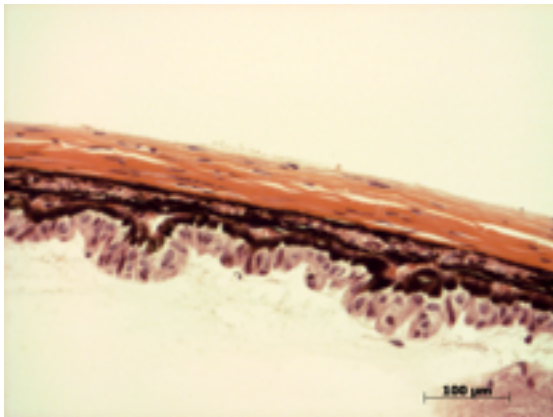
Gene: **Ncaph**

Genotype

+/-

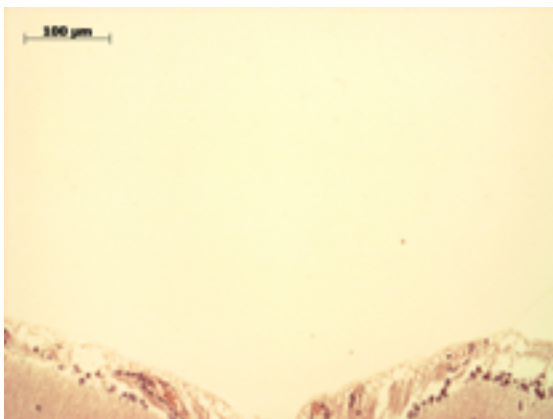
Sanger Colony: MCEE

---



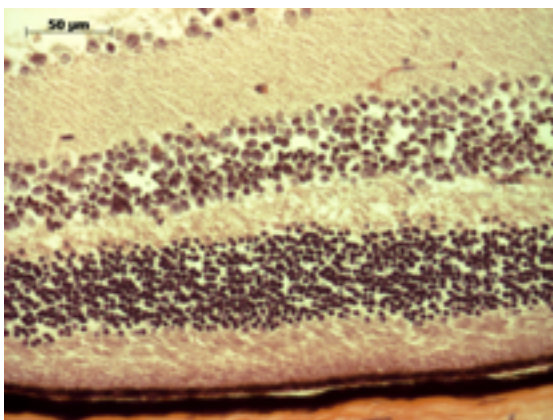
**Ciliary body:**

**1/6.** The ciliary body is thin in one eye.



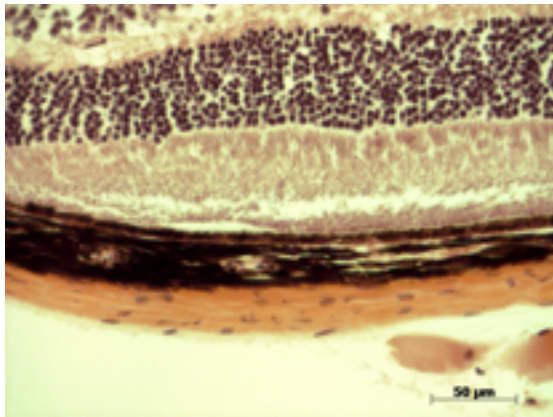
**Vitreous:**

**6/6.** No abnormal opacities or cells.



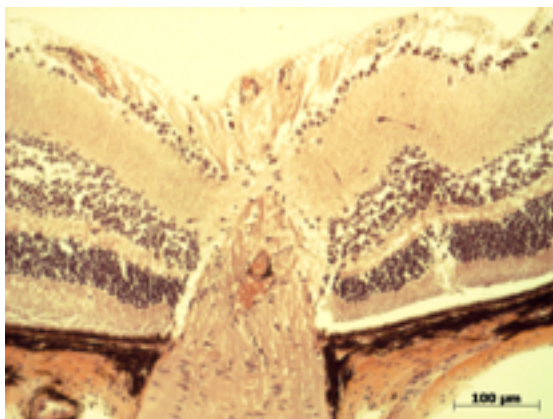
**Retina:**

**6/6.** The retinal ganglion, inner nuclear and photoreceptor layers are normal.



**Retinal pigment epithelium and Choroid:**

**6/6.** Normal pigmentation. Bruch's membrane is intact. No neovascular membranes were noted.



**Optic Nerve:**

**6/6.** The nerve is normal.

**Methods.** 6 eyes from 3 male mice were enucleated by blunt dissection and fixed. Pupil-optic nerve sections were processed with hematoxylin and eosin, and standard images were captured under light microscopy for review.