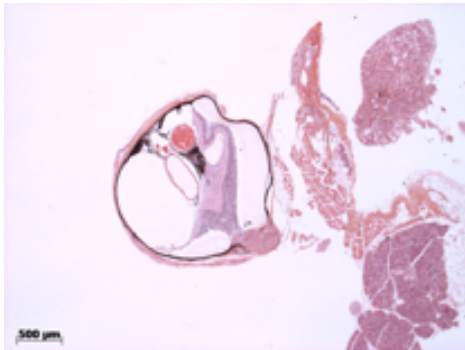


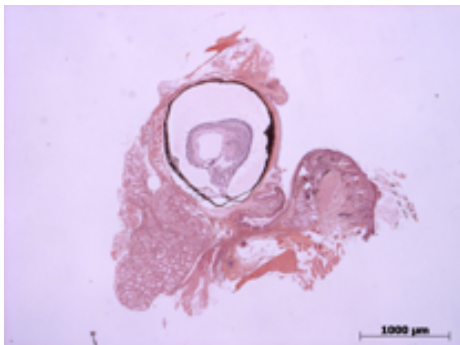
**Abnormal Findings:** Whole eye dysmorphology.

## EYE Phenotype



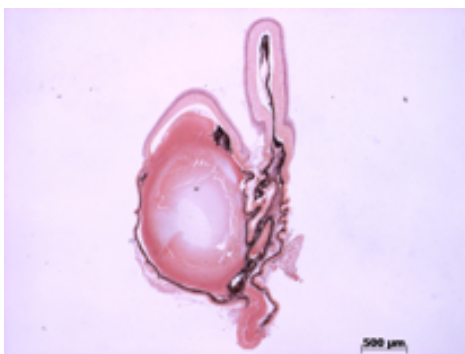
### Anterior Segment:

**3/6.** The corneas are thin with abnormal lamellae and stroma. The anterior chamber is shallow, this iris is pressed against the cornea, the angle is missing. The lens is missing small, vacuolated or cataractous.



### Posterior Segment:

**3/6.** The vitreous space is small or absent. The retina is detached, malformed or missing. The RPE/choroid is thin.



### Whole eye:

**3/6.** The globe is small with collapse of the internal tissues.

**Methods.** 6 eyes from 3 male mice were enucleated by blunt dissection and fixed. Pupil-optic nerve sections were processed with hematoxylin and eosin, and standard images were captured under light microscopy for review.