

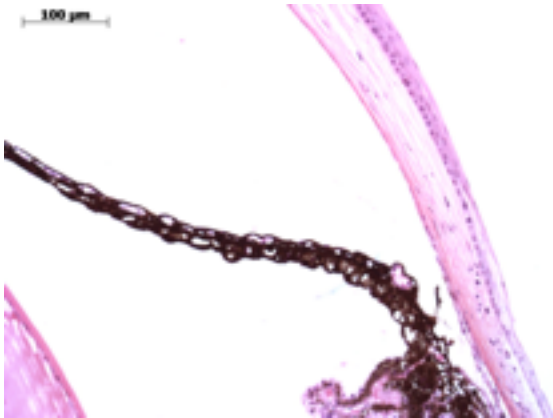
Abnormal Findings: None.

EYE Phenotype



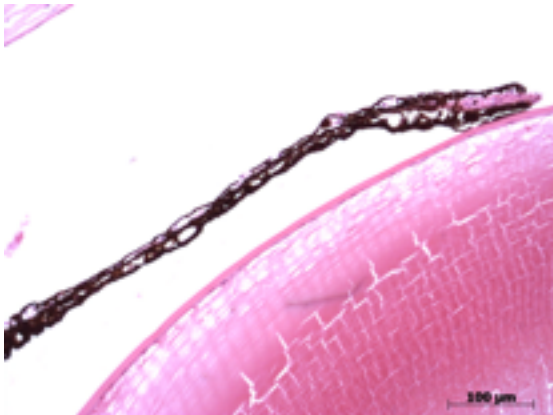
Cornea:

10/10. Normal corneal epithelium, stroma, and endothelium.



Anterior chamber:

10/10. The anterior chamber was of normal depth without cells, and the angle appeared open.



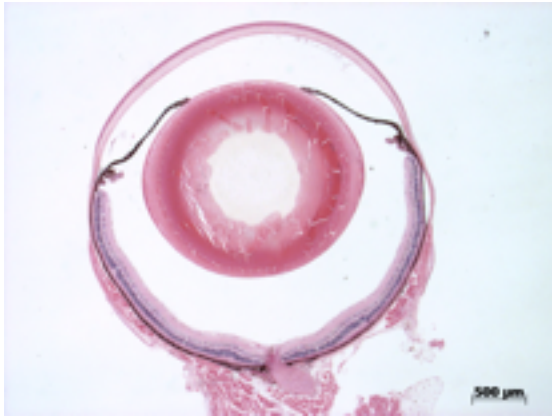
Iris:

10/10. The iris showed normal pigmentation without rubeosis or pupillary membranes.

Gene: **St18**

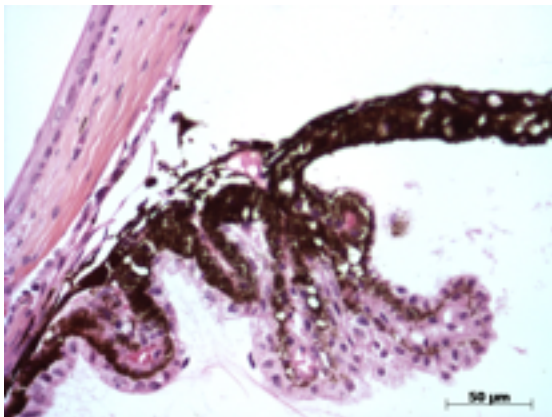
Genotype **-/-**

Sanger Colony: MCTY



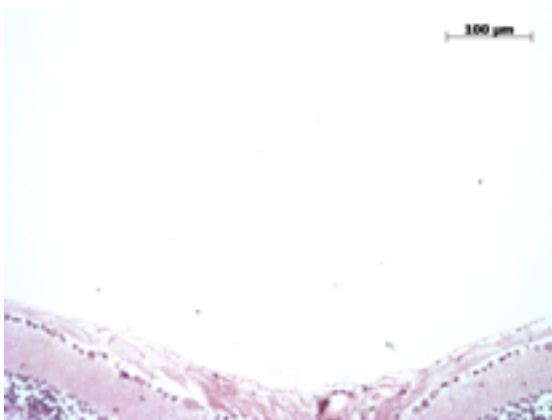
Lens:

10/10. No cataract was observed.



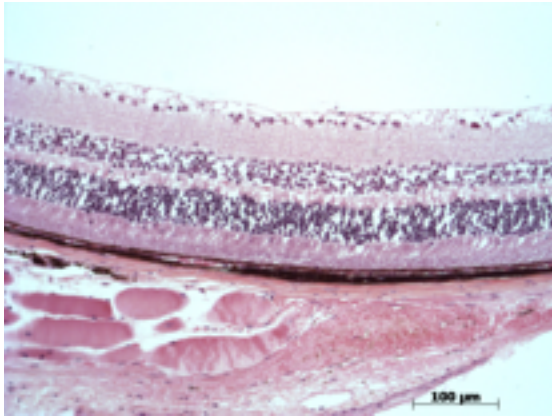
Ciliary body:

10/10. Normal stroma, pigmented and nonpigmented layers were present along with cilia.



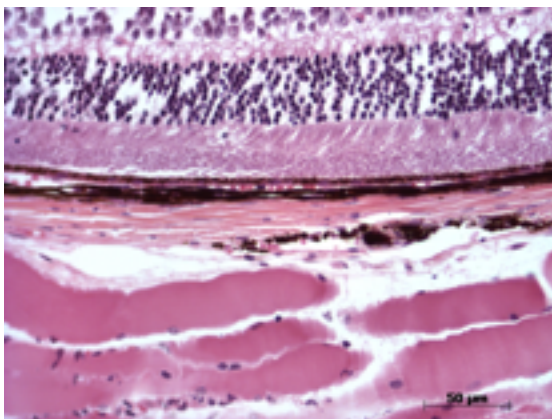
Vitreous:

10/10. No abnormal opacities or cells.



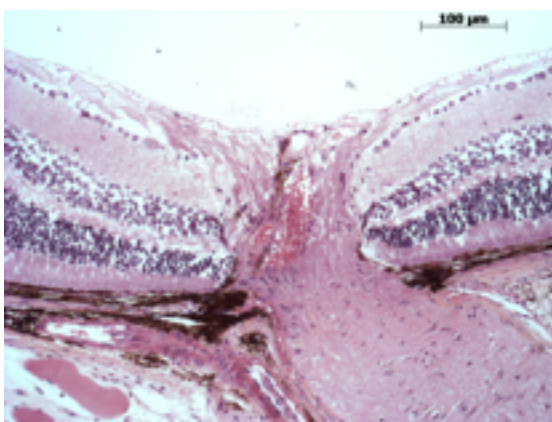
Retina:

10/10. The retinal ganglion, inner nuclear and photoreceptor layers are normal.



Retinal pigment epithelium and Choroid:

10/10. Normal pigmentation. Bruch's membrane is intact. No neovascular membranes were noted.



Optic Nerve:

10/10. The nerve is normal.

Methods. 10 eyes from 5 male mice were enucleated by blunt dissection and fixed. Pupil-optic nerve sections were processed with hematoxylin and eosin, and standard images were captured under light microscopy for review.