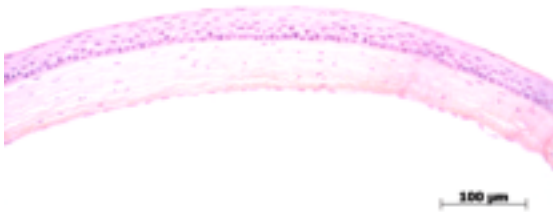


Abnormal Findings: Anterior Chamber (MP:0005205), (MP:0009829).

EYE Phenotype

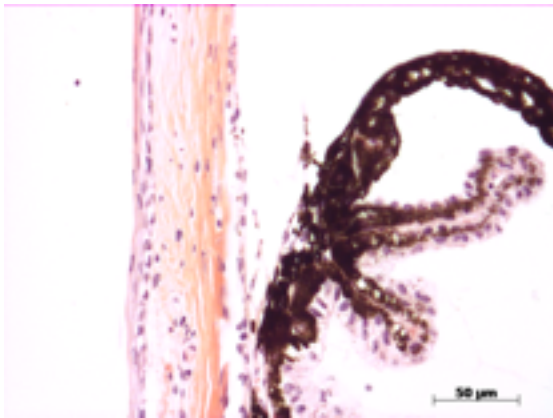
Cornea:

6/6. Normal corneal epithelium, stroma, and endothelium.



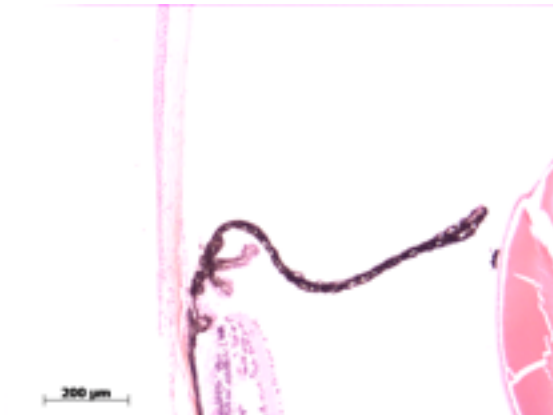
Anterior chamber:

3/6. The anterior chamber was very deep in two eyes. There were no cells, and the angle appeared open.



Iris:

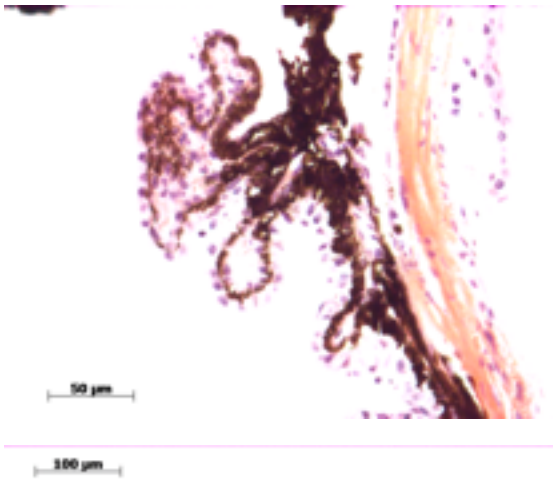
6/6. The iris showed normal pigmentation without rubeosis or pupillary membranes.





Lens:

3/6. No cataract was observed, but the lens was displaced posteriorly, and the anterior segment was larger than normal.



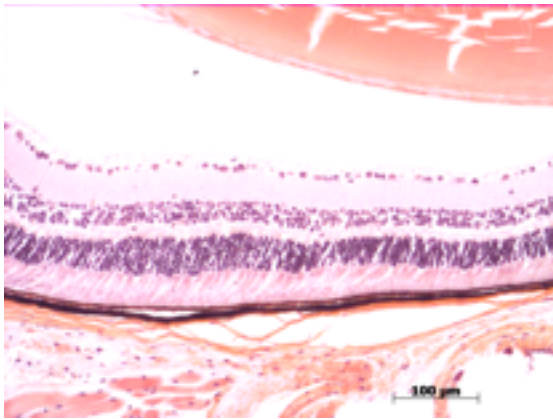
Ciliary body:

6/6. Normal stroma, pigmented and nonpigmented layers were present along with cilia.



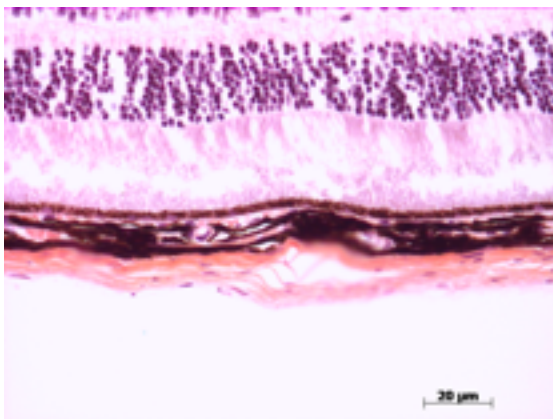
Vitreous:

6/6. No abnormal opacities or cells.



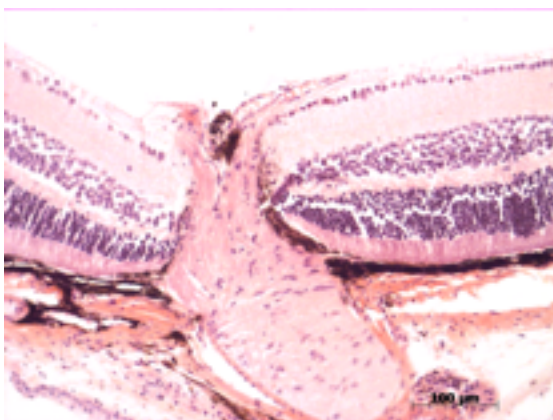
Retina:

6/6. The retinal ganglion, inner nuclear and photoreceptor layers are normal.



Retinal pigment epithelium and Choroid:

6/6. Normal pigmentation. Bruch's membrane is intact. No neovascular membranes were noted.



Optic Nerve:

6/6. The nerve is normal.

Methods. 6 eyes from 3 male mice were enucleated by blunt dissection and fixed. Pupil-optic nerve sections were processed with hematoxylin and eosin, and standard images were captured under light microscopy for review.