

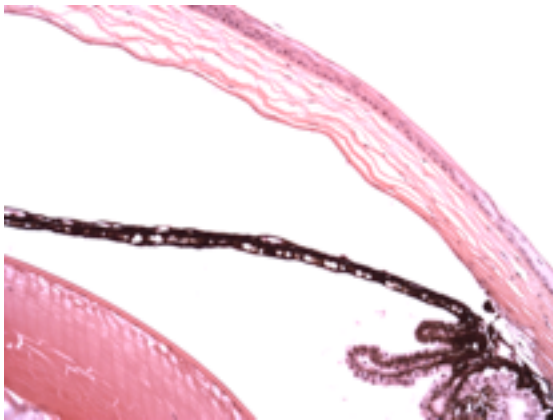
**Abnormal Findings:** nuclear cataract [0010254], disorganized retina cells [0003728], two animals had whole eye dysmorphology [0001325].

## EYE Phenotype



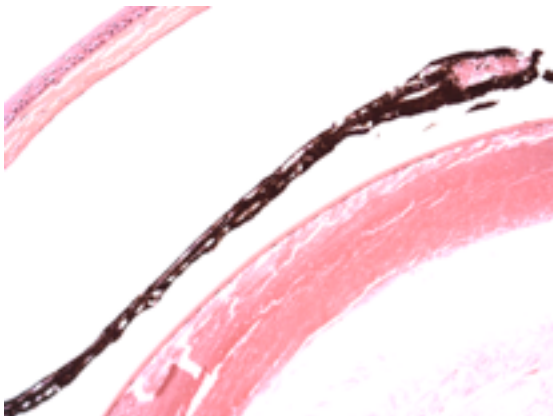
### Cornea:

**8/8.** Normal corneal epithelium, stroma, and endothelium.



### Anterior chamber:

**8/8.** The anterior chamber was of normal depth without cells, and the angle appeared open.



### Iris:

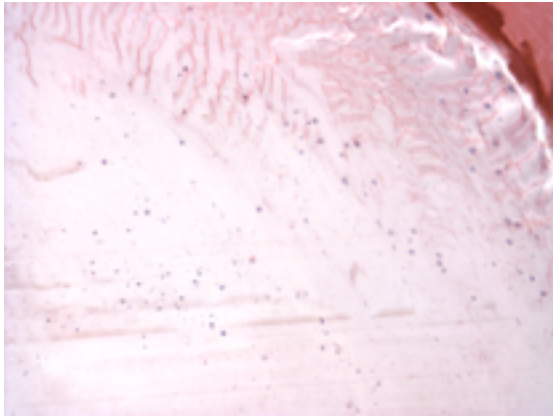
**8/8.** The iris showed normal pigmentation without rubeosis or pupillary membranes.

Gene: **Slc20a2**

Genotype -/-

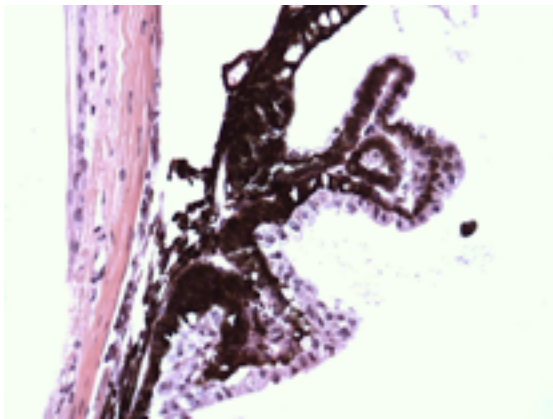
Sanger Colony: MEQX

---



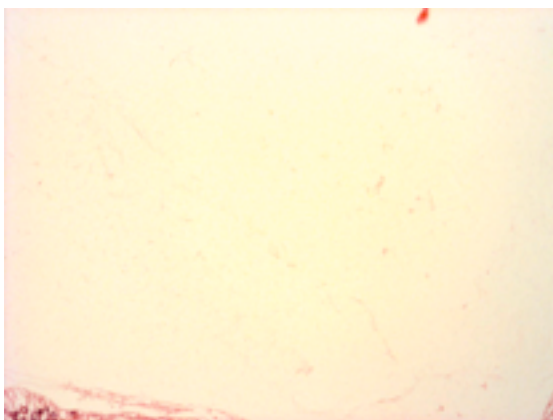
**Lens:**

**6/8.** Nuclear cataracts were observed.



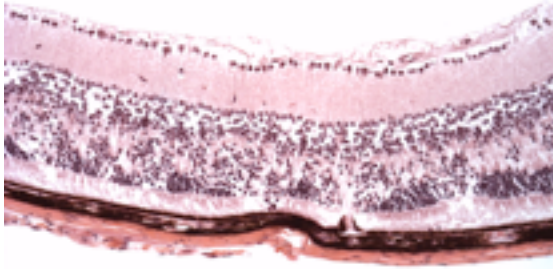
**Ciliary body:**

**8/8.** Normal stroma, pigmented and nonpigmented layers were present along with cilia.



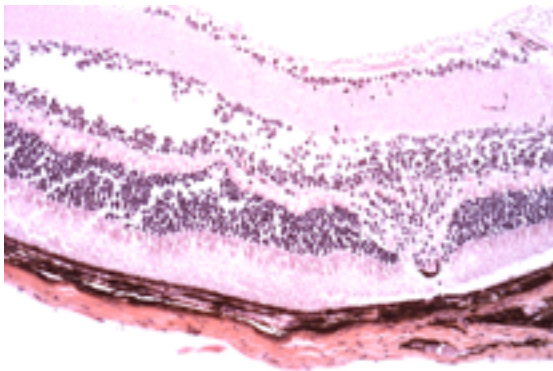
**Vitreous:**

**8/8.** No abnormal opacities or cells.



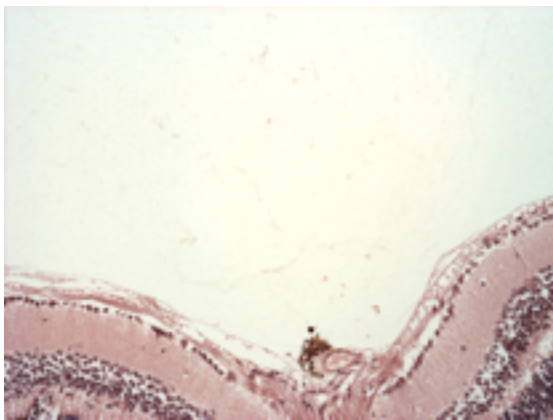
**Retina:**

**7/8.** The retinal ganglion was normal; the inner nuclear and photoreceptor layers appeared disorganized.



**Retinal pigment epithelium and Choroid:**

**2/8.** There was pigmentary migration into the photoreceptor layer. Bruch's membrane was intact. No neovascular membranes were noted.

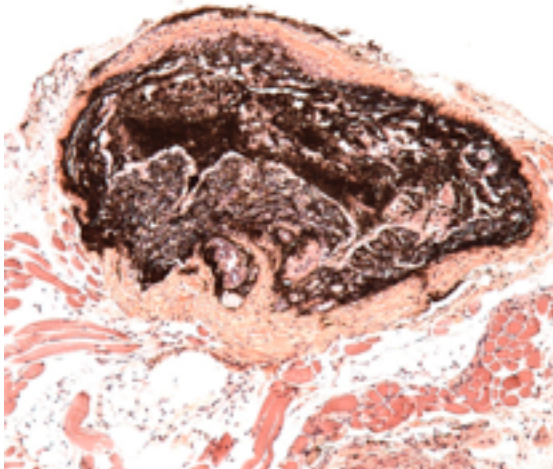


**Optic Nerve:**

**8/8.** The nerve is normal.

**Whole Eye:**

**2/8.** Whole eye dysmorphology was seen in two different animals.



**Methods.** 8 eyes from 4 male mice were enucleated by blunt dissection and fixed. Pupil-optic nerve sections were processed with hematoxylin and eosin, and standard images were captured under light microscopy for review.