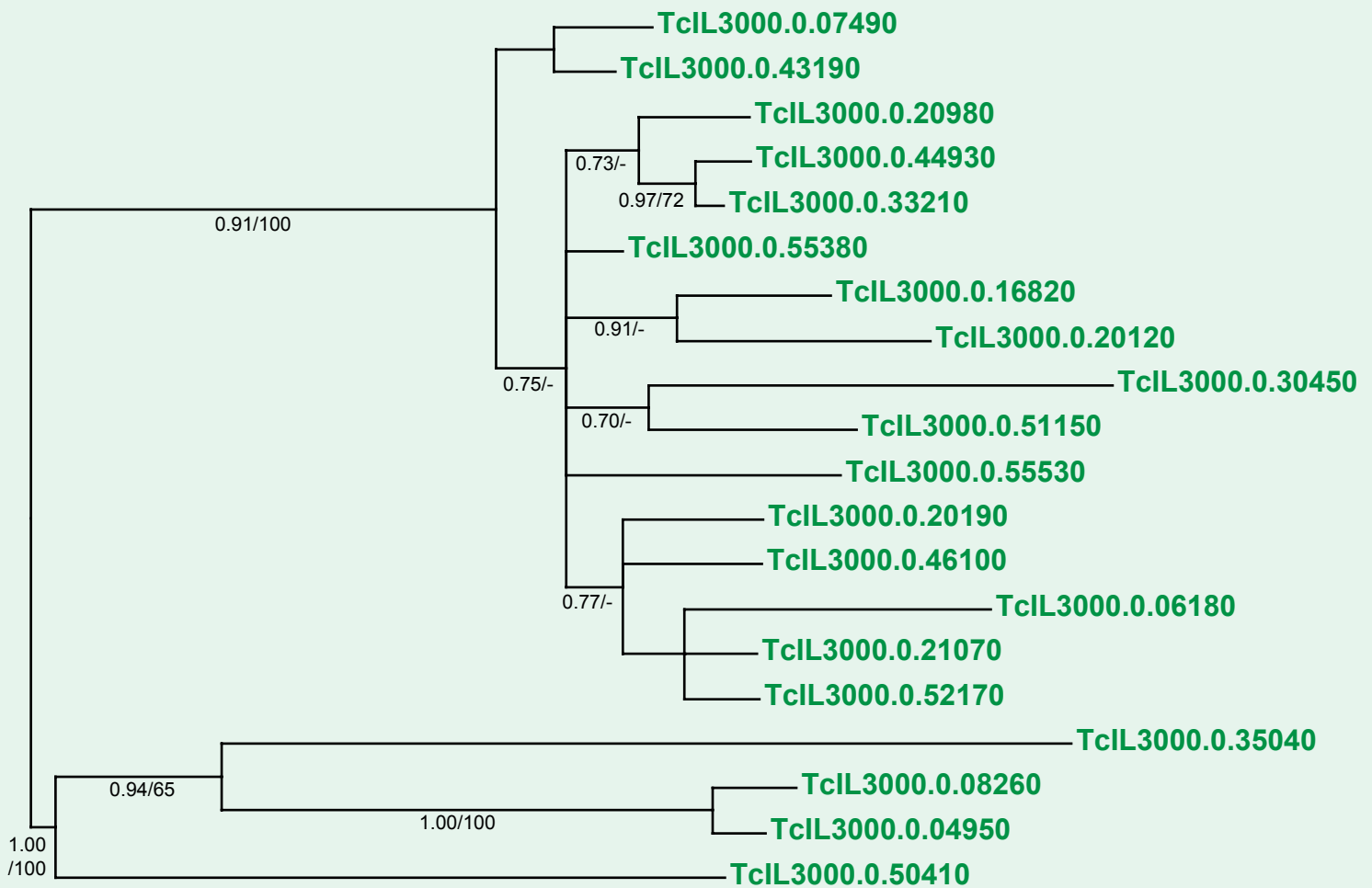


If you use this data, please cite:

Jackson, AP et al. 2012. A cell surface phylome for African Trypanosomes. *Manuscript submitted.*



## Fam17: Hypothetical protein



0.02 sub/site

**NOTES:** Fam17 comprises various genes encoding hypothetical proteins of 119 amino acids with predicted signal peptides. All gene copies are currently unplaced and therefore likely to be located within subtelomeric regions.

The Bayesian phylogram was estimated from a multiple nucleotide sequence alignment of 365 characters, using MrBayes and a GTR+ $\Gamma$  model. Selected nodes are supported by posterior probabilities and non-parametric bootstraps generated from a maximum likelihood analysis under a GTR+ $\Gamma$  model. The tree mid-point rooted.