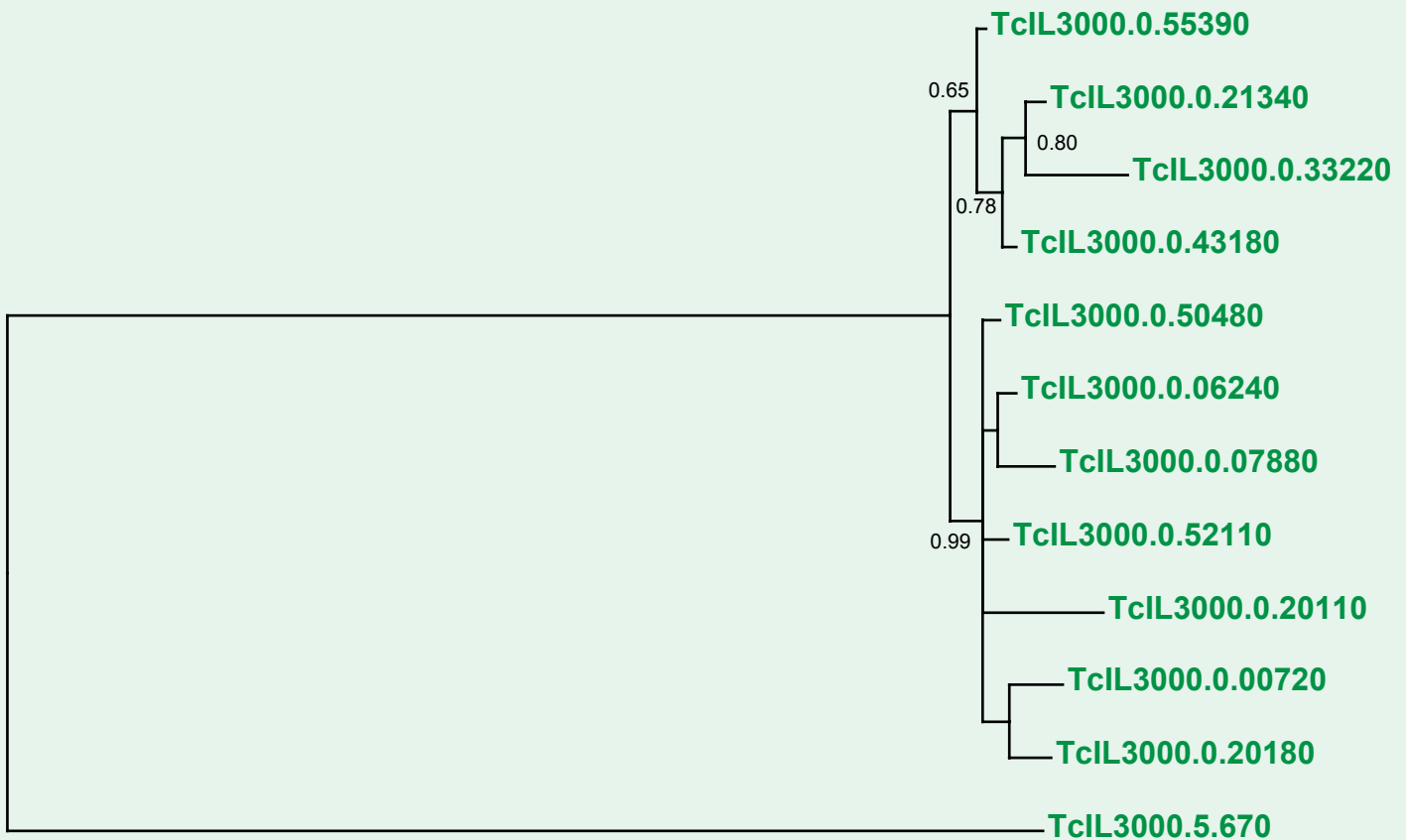


If you use this data, please cite:

Jackson, AP et al. 2012. A cell surface phylome for African Trypanosomes. *Manuscript submitted.*

## Fam18: Hypothetical protein



0.5 sub/site

**NOTES:** **Fam18** comprises various genes encoding hypothetical proteins of 185 amino acids with predicted signal peptides. One gene copy is located in the subtelomere of chromosome 5 (TcIL3000.5.670) and this is both longer (246aa) and divergent. All other gene copies are currently unplaced and therefore likely to be located within subtelomeric regions.

The Bayesian phylogram was estimated from a multiple nucleotide sequence alignment of 750 characters, using MrBayes and a GTR+ $\Gamma$  model. Nodes are supported by posterior probability values. The tree mid-point rooted.