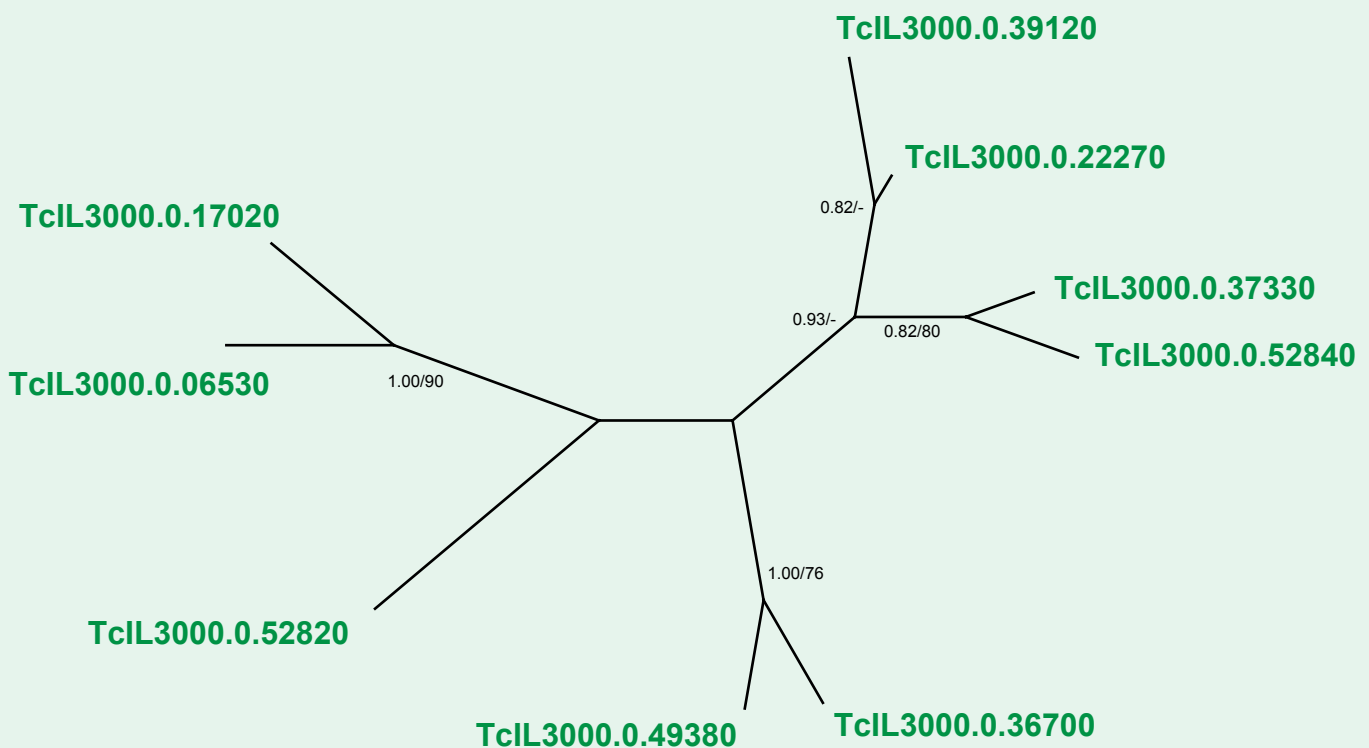


If you use this data, please cite:

Jackson, AP et al. 2012. A cell surface phylome for African Trypanosomes. *Manuscript submitted.*

## Fam21: Hypothetical protein



**NOTES:** **Fam21** comprises several genes encoding hypothetical proteins of 161 amino acids with predicted signal peptides. All gene copies are currently unplaced.

The Bayesian phylogram was estimated from a multiple nucleotide sequence alignment of 483 characters, using MrBayes and a GTR+ $\Gamma$  model. Selected nodes are supported by posterior probabilities and non-parametric bootstraps generated from a maximum likelihood analysis under a GTR+ $\Gamma$  model. The tree is unrooted.