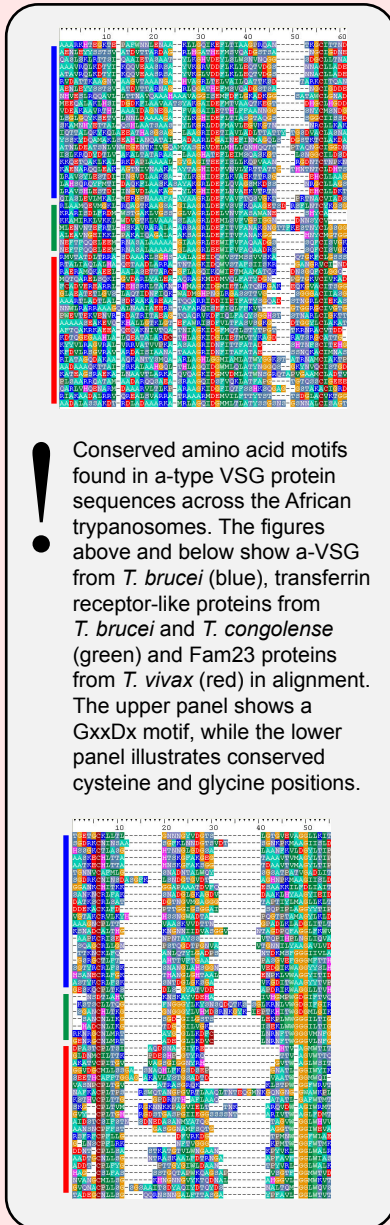


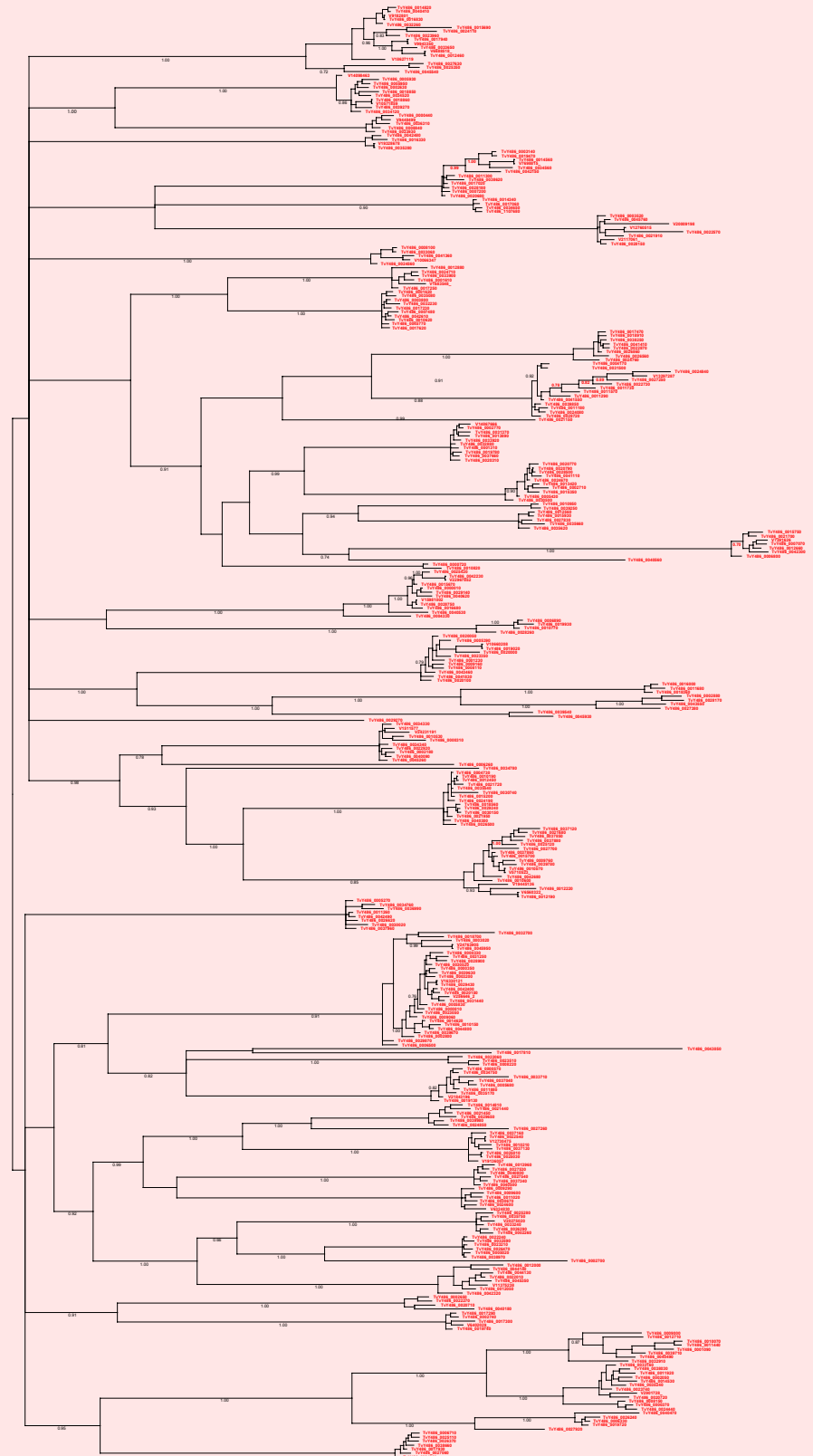
If you use this data, please cite:

Jackson, AP et al. 2012. A cell surface phylome for African Trypanosomes. *Manuscript submitted.*

## Fam23: aVSG-like protein



0.5 rep/site



**NOTES:** Fam23 consists of gene sequences predicted to encode proteins with significant similarity to a-type VSG in *T. brucei*. All gene products have predicted signal peptides and conserved amino acid motifs characteristic of the a-type VSG.

The Bayesian phylogram was estimated from a multiple protein sequence alignment of 363 taxa and 582 characters, which represents all full-length family members. A further 112 partial gene sequences (curtailed by sequence gaps) also belong to this family. A WAG+ $\Gamma$  model was applied using MrBayes was under default settings. The tree is mid-point rooted. Selected nodes are supported by posterior probabilities.