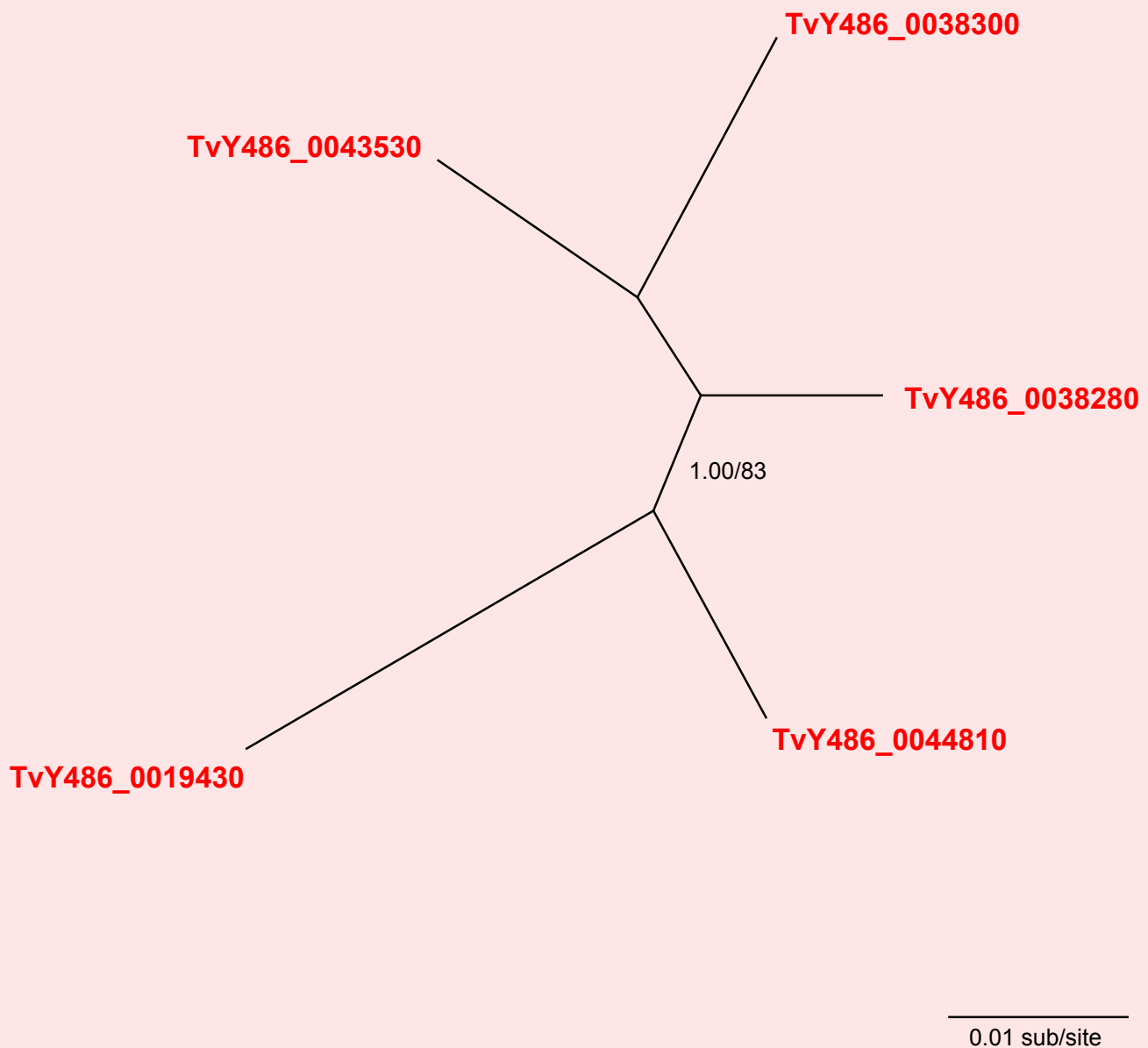


If you use this data, please cite:

Jackson, AP et al. 2012. A cell surface phylome for African Trypanosomes. *Manuscript submitted.*



Fam27: Putative membrane protein



NOTES: Fam27 consists of five sequences. All genes encode hypothetical proteins with predicted signal peptides but no GPI anchor. All sequences are unplaced, although two sequences are arranged in tandem on a single contig.

The Bayesian phylogram was estimated from a multiple protein sequence alignment of 309 characters, using MrBayes under default settings. The tree is mid-point rooted. Selected nodes are supported by posterior probabilities.