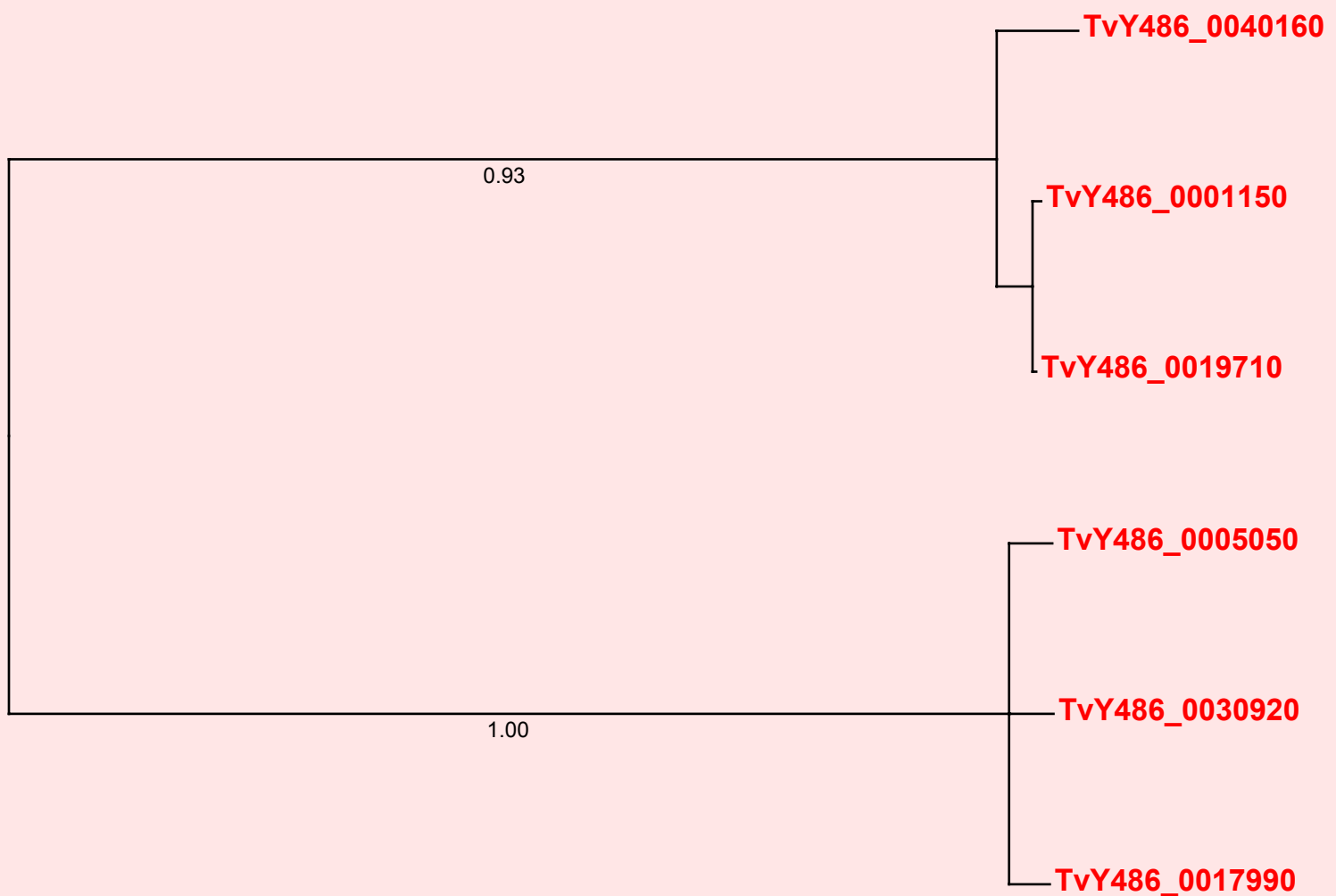


If you use this data, please cite:

Jackson, AP et al. 2012. A cell surface phylome for African Trypanosomes. *Manuscript submitted.*



Fam28: Hypothetical membrane protein



NOTES: **Fam28** consists of six sequences split into two distantly related clades. All genes encode hypothetical proteins with predicted signal peptides but no GPI anchor. All sequences are unplaced.

The Bayesian phylogram was estimated from a multiple nucleotide sequence alignment of 2331 characters, using MrBayes under default settings. The tree is mid-point rooted. Selected nodes are supported by posterior probabilities.