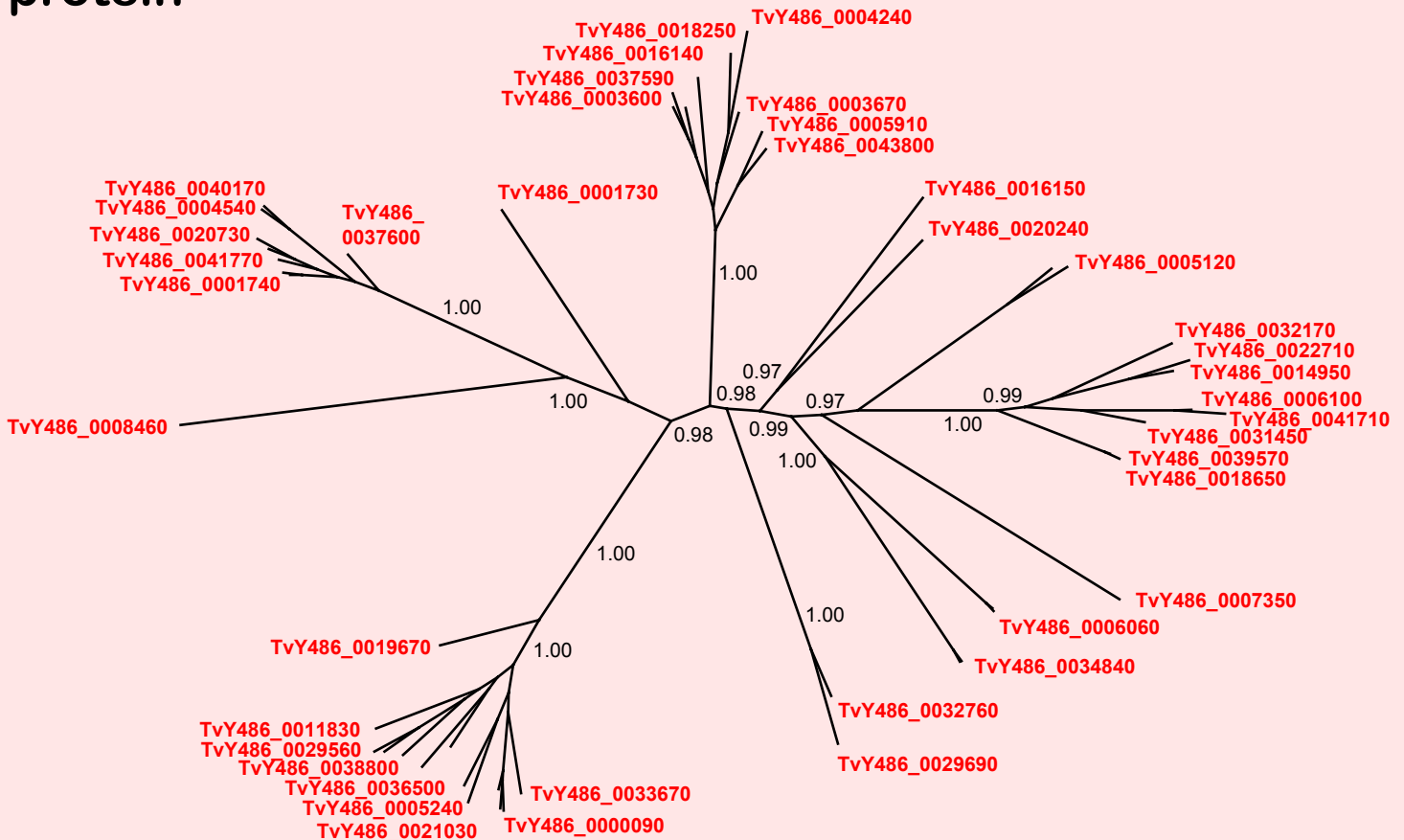


If you use this data, please cite:

Jackson, AP et al. 2012. A cell surface phylome for African Trypanosomes. *Manuscript submitted.*



Fam30: Putative secreted protein



0.5 rep/site

NOTES: Fam30 consists of 51 genes encoding hypothetical proteins without matches to known protein domains. All gene family members encode proteins with predicted signal peptides, but no GPI anchor. All sequences are unplaced.

The Bayesian phylogram was estimated from a multiple protein sequence alignment of 564 characters, using MrBayes under default settings. The tree is unrooted. Selected nodes are supported by posterior probabilities.