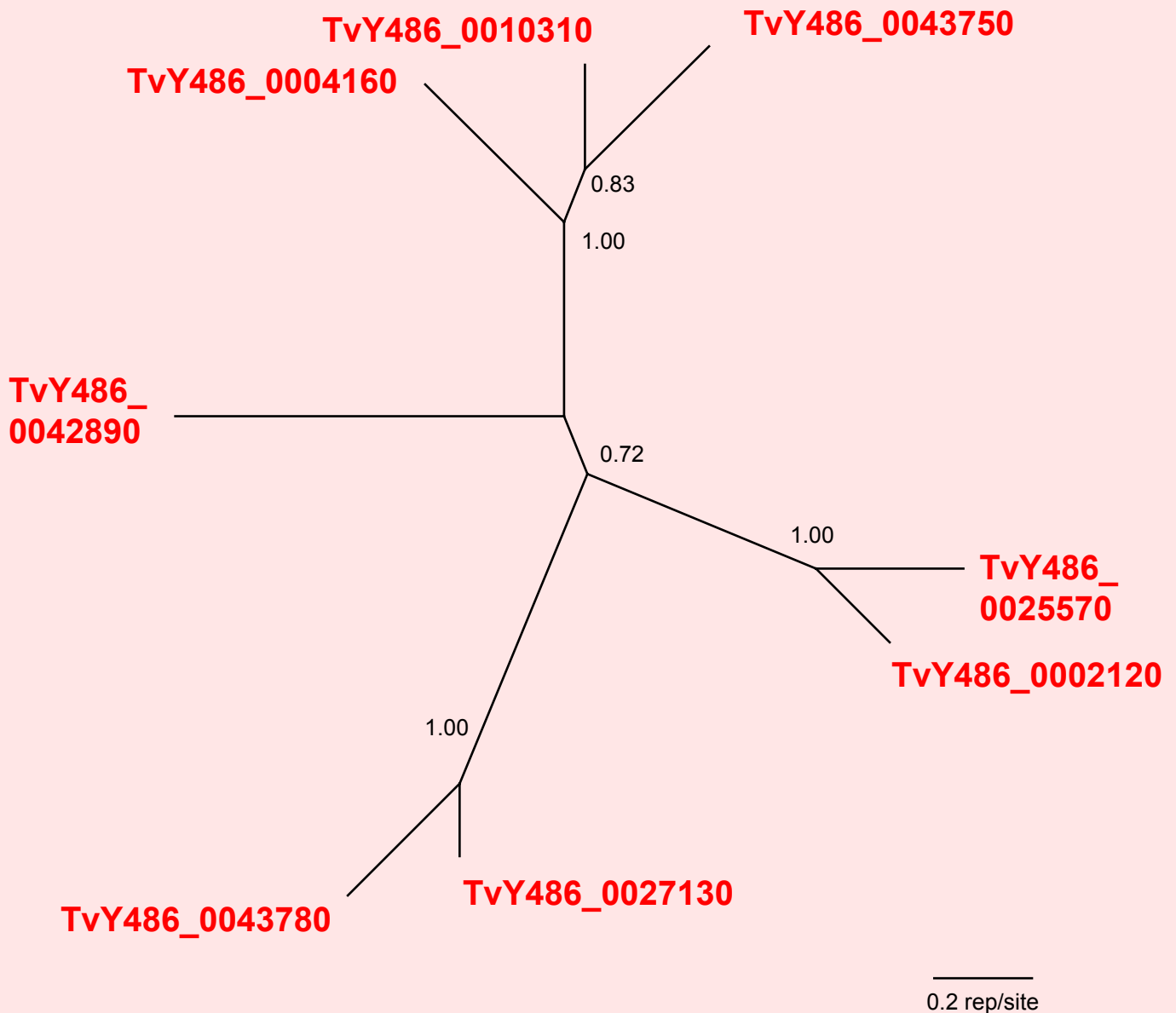


If you use this data, please cite:

Jackson, AP et al. 2012. A cell surface phylome for African Trypanosomes. *Manuscript submitted.*



Fam32: Putative secreted protein



NOTES: Fam32 comprises eight unplaced, putative genes unique to *T. vivax*. These encode hypothetical proteins without matches to known protein domains, but all family gene products have putative signal peptides.

The Bayesian phylogram was estimated from a multiple nucleotide sequence alignment of 756 characters, using MrBayes under default settings. The tree is unrooted. Selected nodes are supported by posterior probabilities.