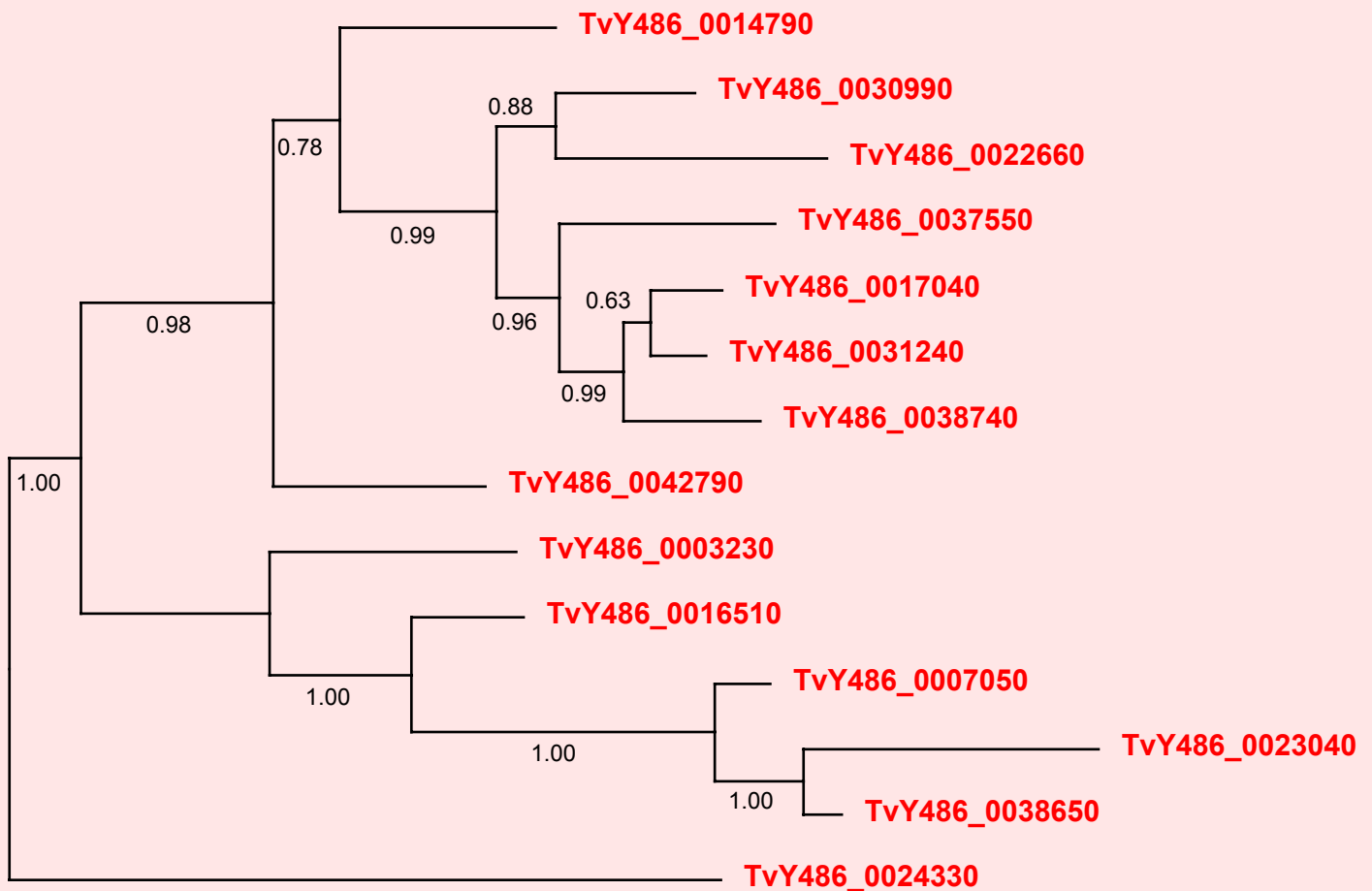


If you use this data, please cite:

Jackson, AP et al. 2012. A cell surface phylome for African Trypanosomes. *Manuscript submitted.*



Fam33: Putative surface protein



0.1 sub/site

NOTES: Fam33 consists of 14 gene copies encoding a hypothetical protein without matches to known protein domains and unique to *T. vivax*. All family members have a predicted GPI anchor but no signal peptide or transmembrane helices.

The Bayesian phylogram was estimated from a multiple nucleotide sequence alignment of 756 characters, using MrBayes under default settings. The tree is rooted with a divergent sequence. Selected nodes are supported by posterior probabilities.