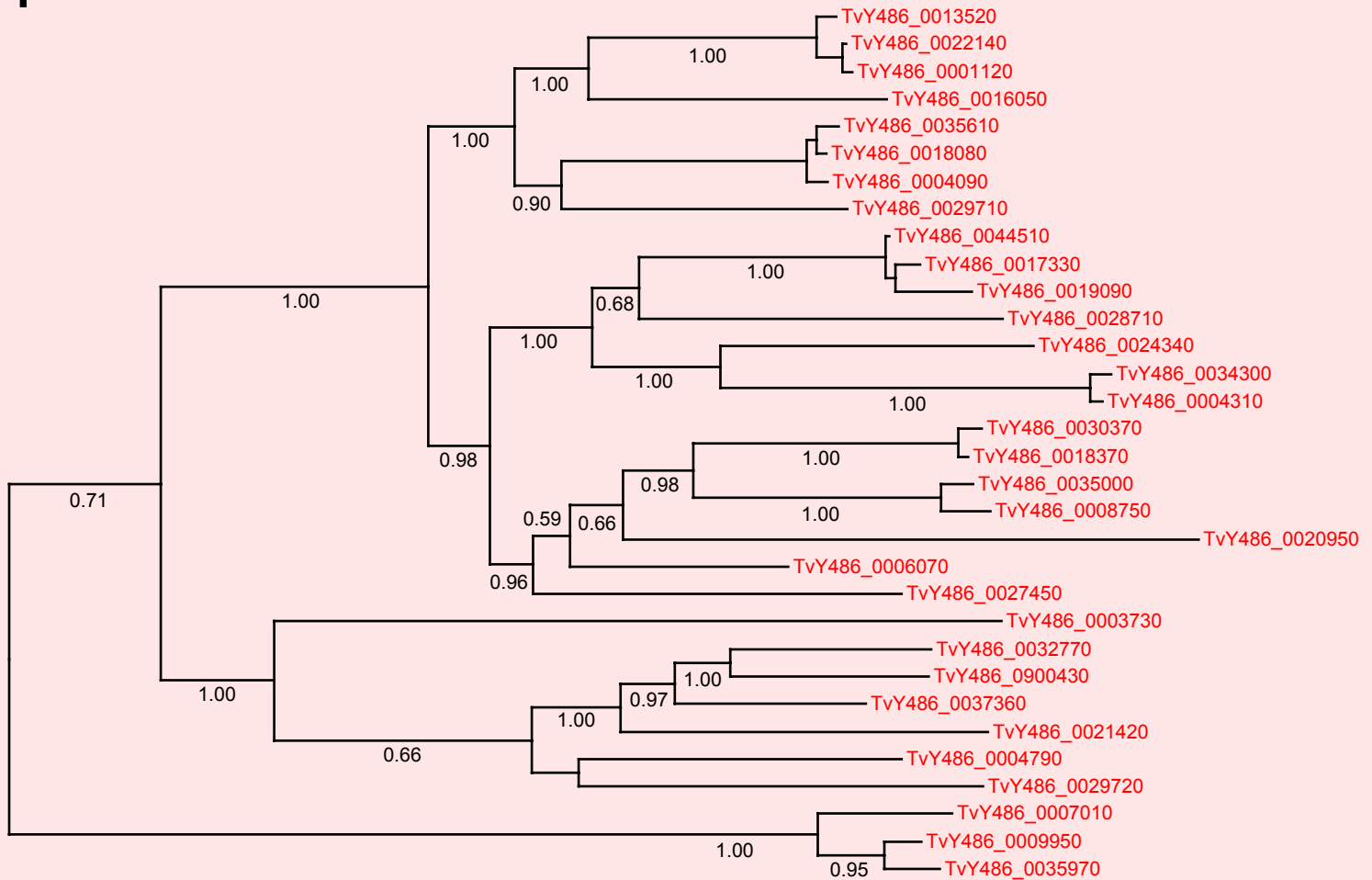


If you use this data, please cite:

Jackson, AP et al. 2012. A cell surface phylome for African Trypanosomes. *Manuscript submitted.*



## Fam34: Putative secreted protein



0.25 rep/site

**NOTES:** Fam34 consists of 34 gene copies encoding a hypothetical protein without matches to known protein domains and unique to *T. vivax*. All family members have a predicted signal peptide.

The Bayesian phylogram was estimated from a multiple protein sequence alignment of 440 characters, using MrBayes under default settings. The tree is mid-point rooted on a divergent clade. Selected nodes are supported by posterior probabilities.