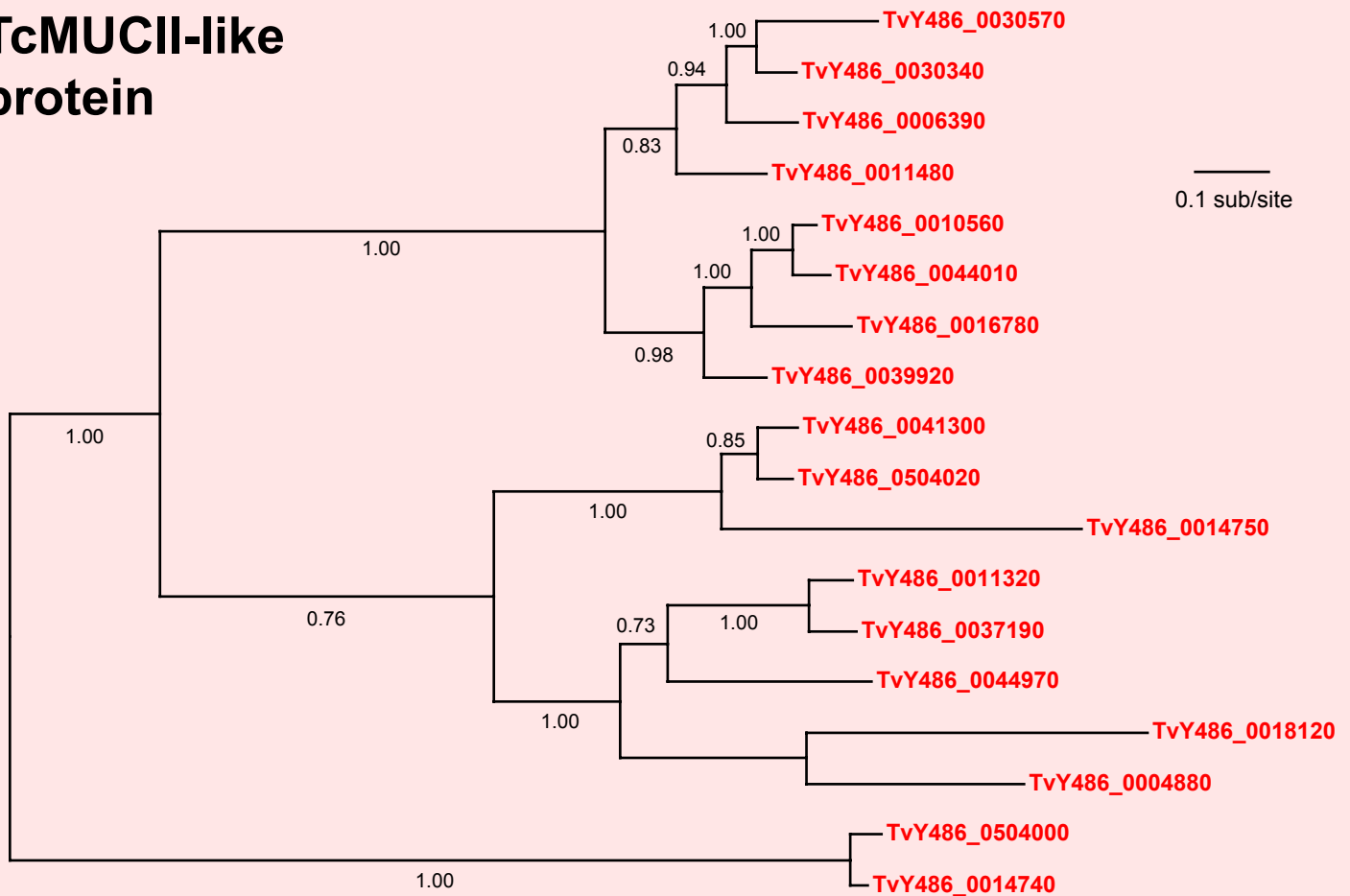


If you use this data, please cite:

Jackson, AP et al. 2012. A cell surface phylome for African Trypanosomes. *Manuscript submitted.*



Fam35: TcMUCII-like protein



NOTES: Fam35 consists of 17 gene copies encoding a hypothetical protein without matches to known protein domains and unique to *T. vivax*. All family members have a predicted signal peptide.

The Bayesian phylogram was estimated from a multiple nucleotide sequence alignment of 1161 characters, using MrBayes under default settings. The tree is mid-point rooted on a divergent sequence. Selected nodes are supported by posterior probabilities.