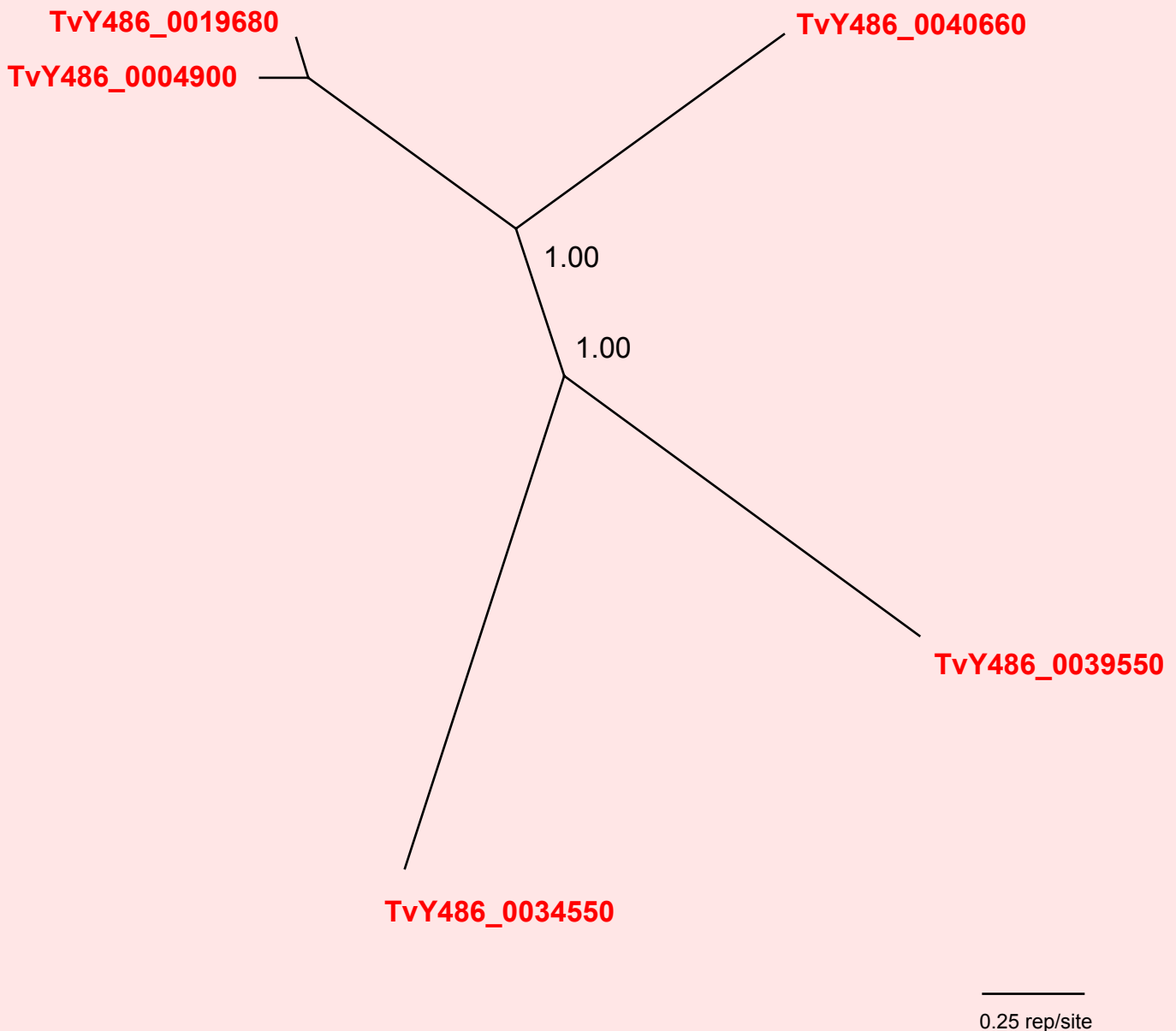


If you use this data, please cite:

Jackson, AP et al. 2012. A cell surface phylome for African Trypanosomes. *Manuscript submitted.*



## Fam36: Putative secreted protein



**NOTES:** Fam36 consists of 5 gene copies encoding a hypothetical protein without matches to known protein domains and unique to *T. vivax*. All family members have a predicted signal peptide.

The Bayesian phylogram was estimated from a multiple nucleotide sequence alignment of 1881 characters, using MrBayes under default settings. The tree is unrooted. Selected nodes are supported by posterior probabilities.