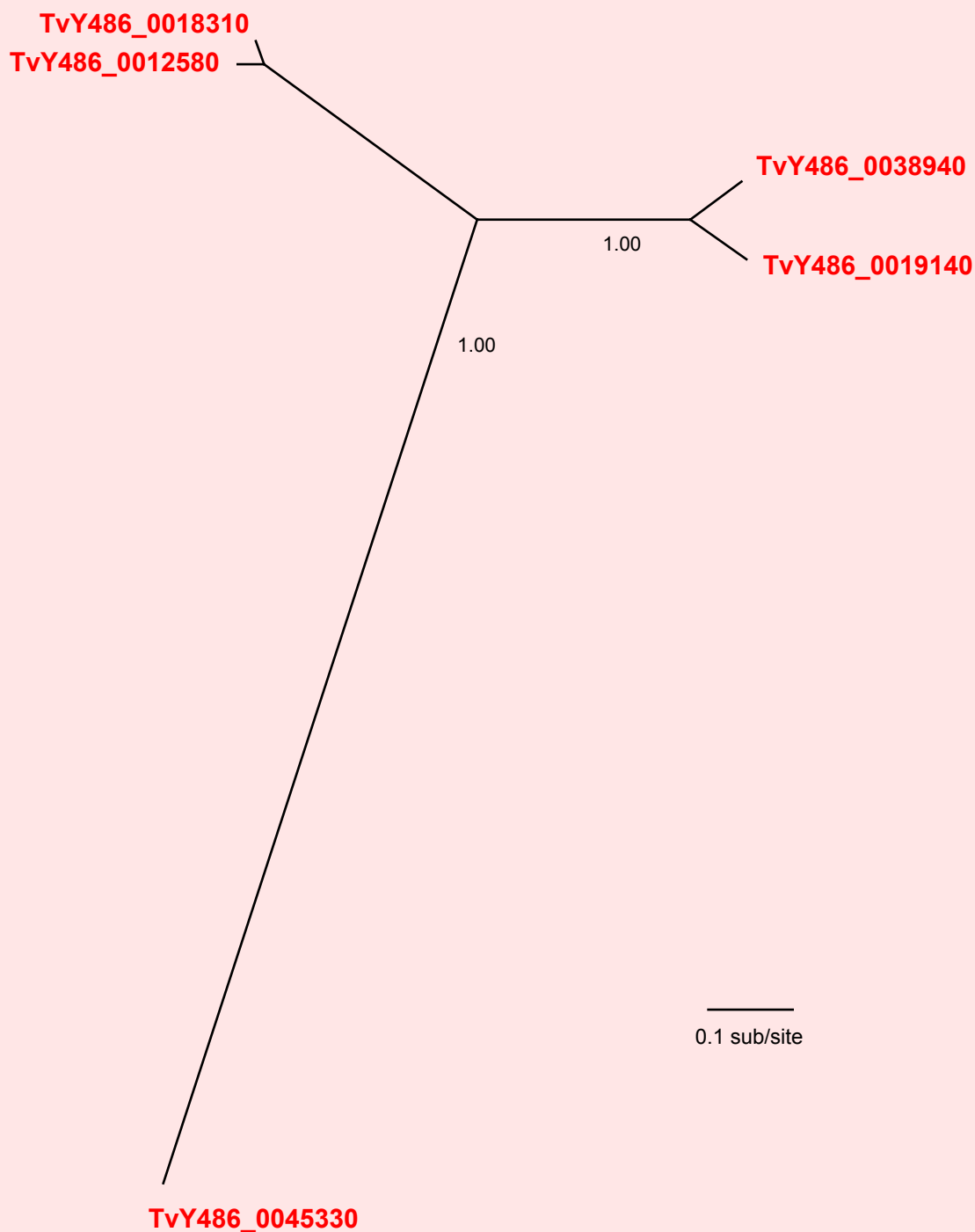


If you use this data, please cite:

Jackson, AP et al. 2012. A cell surface phylome for African Trypanosomes. *Manuscript submitted.*



Fam38: Putative secreted protein



NOTES: Fam38 consists of 5 gene copies encoding a hypothetical protein without matches to known protein domains and unique to *T. vivax*. All family members have a predicted signal peptide.

The Bayesian phylogram was estimated from a multiple nucleotide sequence alignment of 883 characters, using MrBayes under default settings. The tree is unrooted. Selected nodes are supported by posterior probabilities.