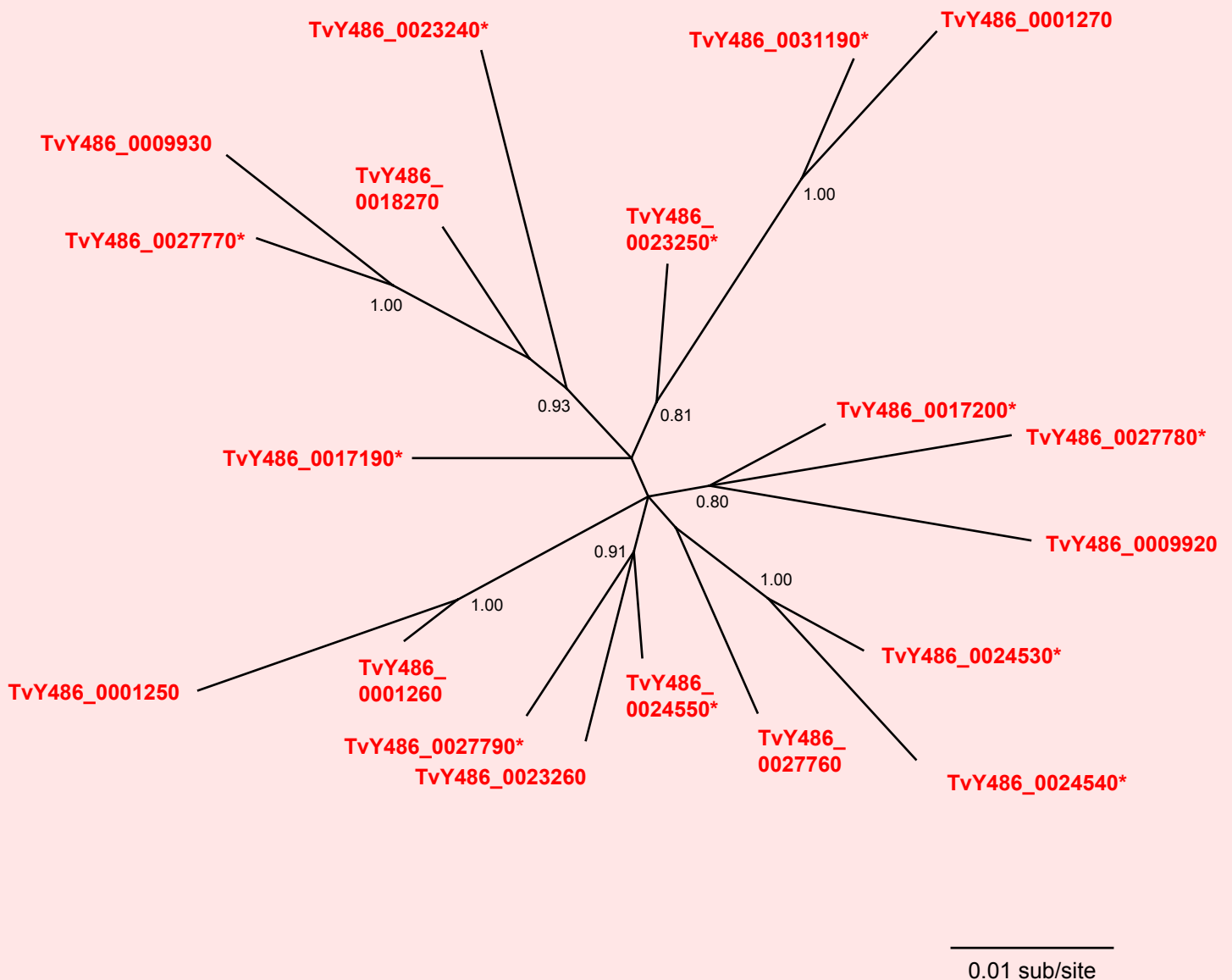


If you use this data, please cite:

Jackson, AP et al. 2012. A cell surface phylome for African Trypanosomes. *Manuscript submitted.*



Fam41: Putative secreted protein



NOTES: **Fam41** comprises 19 unplaced, putative genes unique to *T. vivax*. These encode hypothetical proteins without matches to known protein domains. 10 sequences encode proteins with putative signal peptides, these are indicated by an asterisk *. The remaining 9 sequences are shortened forms but otherwise very similar.

The Bayesian phylogram was estimated from a multiple nucleotide sequence alignment of 918 characters, using MrBayes under default settings. The tree is unrooted. Selected nodes are supported by posterior probabilities.