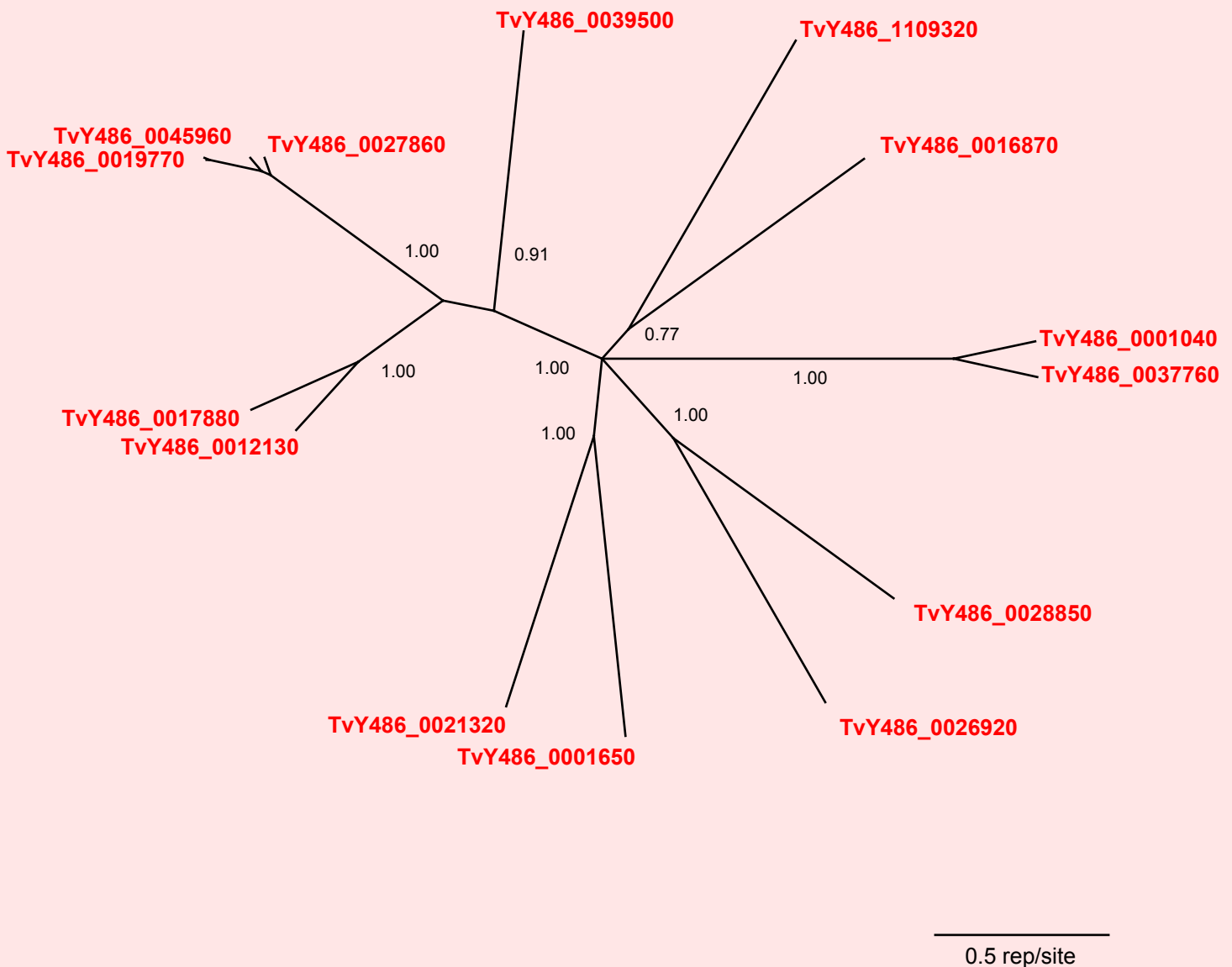


If you use this data, please cite:

Jackson, AP et al. 2012. A cell surface phylome for African Trypanosomes. *Manuscript submitted.*



## Fam42: Putative secreted protein



**NOTES:** **Fam42** consists of 15 unplaced genes unique to *T. vivax*, which encode hypothetical proteins without matches to known protein domains. All putative proteins include a putative signal peptides.

The Bayesian phylogram was estimated from a multiple protein sequence alignment of 520 characters, using MrBayes under default settings. The tree is unrooted. Selected nodes are supported by posterior probabilities.