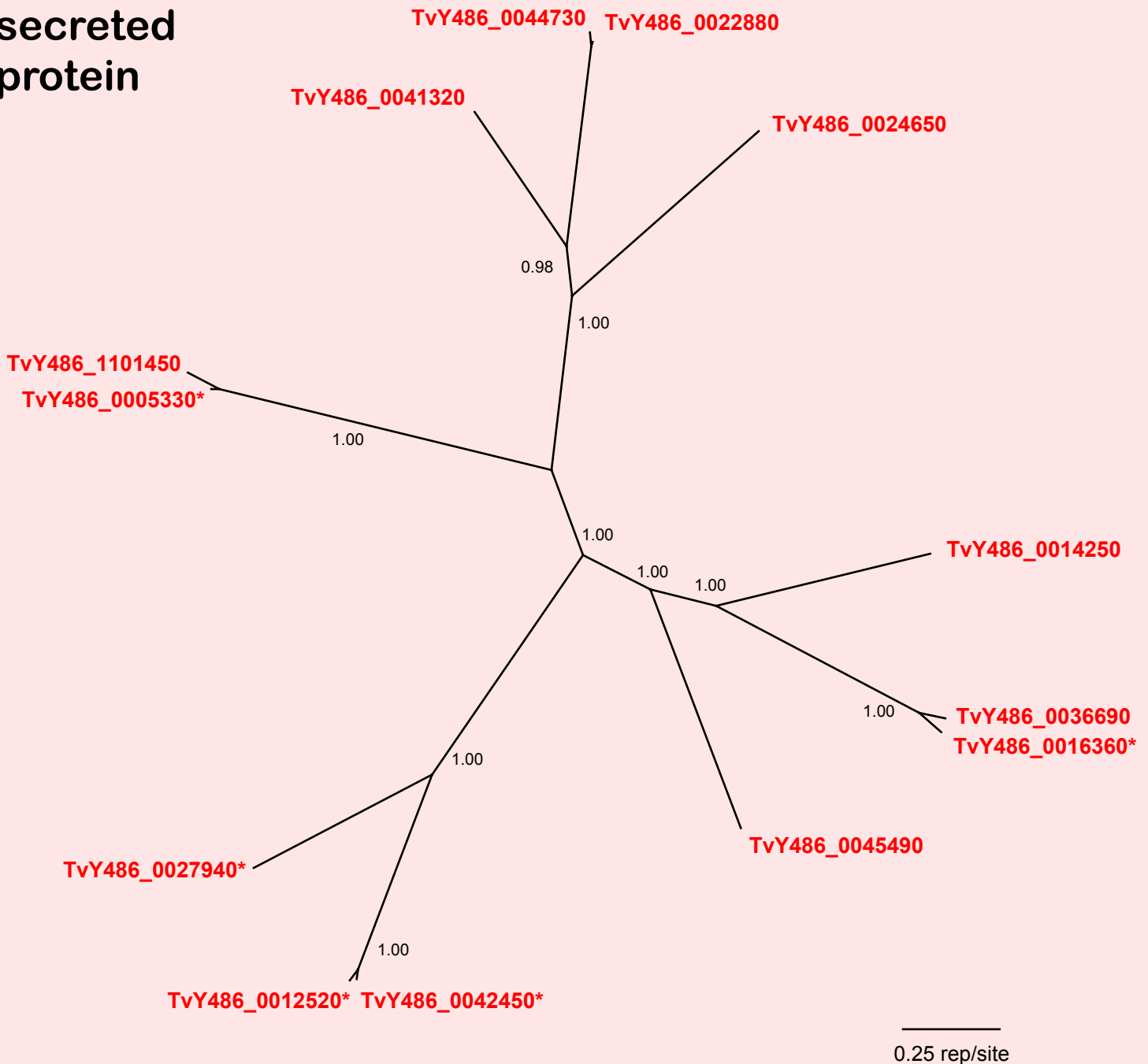


If you use this data, please cite:

Jackson, AP et al. 2012. A cell surface phylome for African Trypanosomes. *Manuscript submitted.*



Fam44: Putative secreted protein



NOTES: **Fam44** consists of 13 genes encoding hypothetical proteins with predicted signal peptides but without matches to known protein domains. All genes are unplaced except for TvY486_1101450. Several genes are curtailed at the 3' end due to sequences gaps, these are marked with an asterisk *.

The Bayesian phylogram was estimated from a multiple protein sequence alignment of 775 characters, using MrBayes under default settings. The tree is unrooted. Selected nodes are supported by posterior probabilities.