

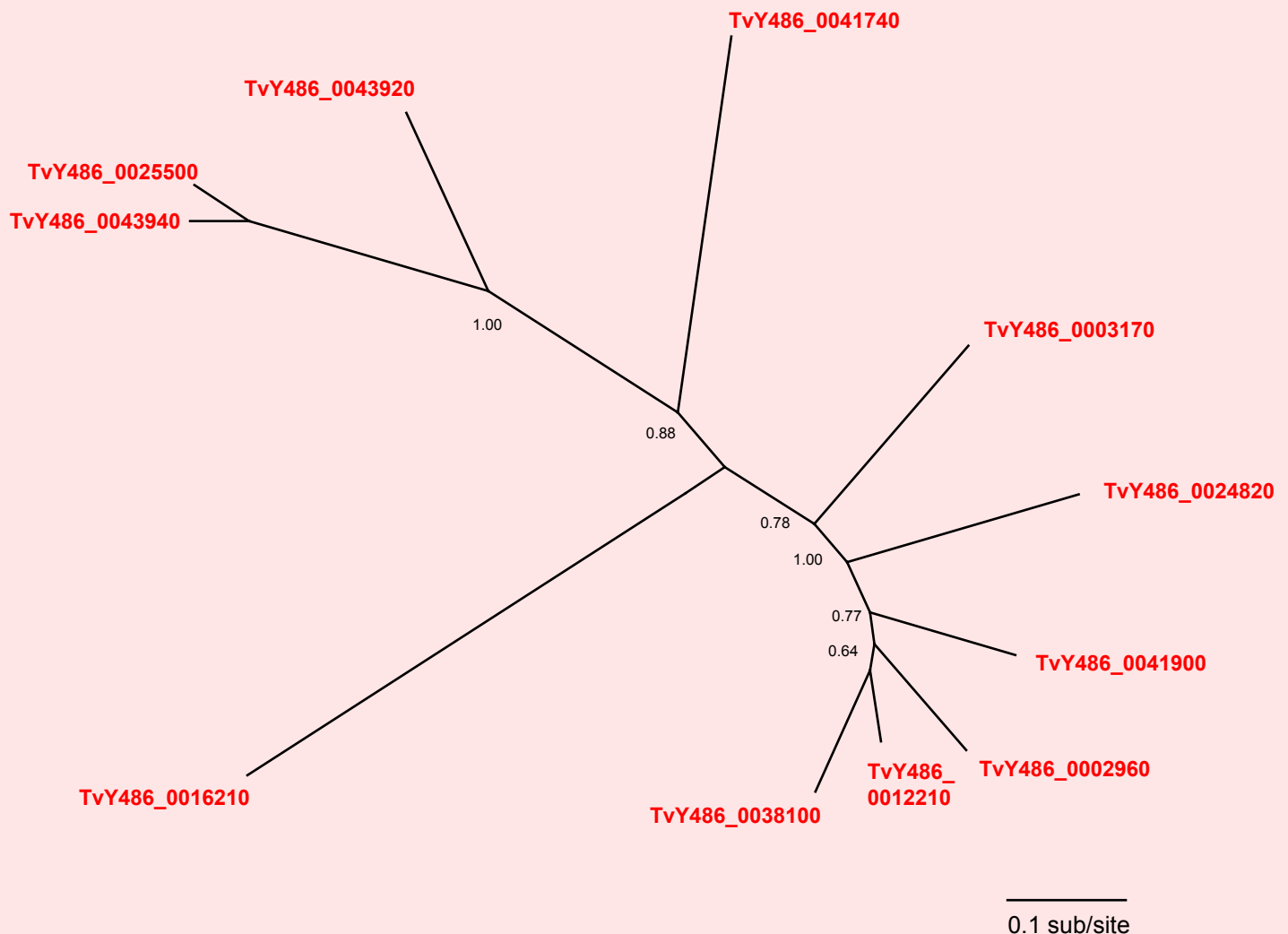
If you use this data, please cite:

Jackson, AP et al. 2012. A cell surface phylome for African Trypanosomes. *Manuscript submitted.*

## Fam45: Putative secreted protein



Fam45 predicted proteins include simple repeat regions and display substantial length variation. It is possible that these genes are in fact conserved non-coding regions. However, they are included here because stop codons are absent.



**NOTES:** Fam45 consists of 11 putative genes encoding hypothetical proteins with predicted signal peptides but without matches to known protein domains. All genes are unplaced. There are several Two genes are curtailed at the 5' end, while two different sequences lack the 3' end of the conserved open reading frame.

The Bayesian phylogram was estimated from a multiple nucleotide sequence alignment of 1452 characters, using MrBayes under default settings. The tree is unrooted. Selected nodes are supported by posterior probabilities.