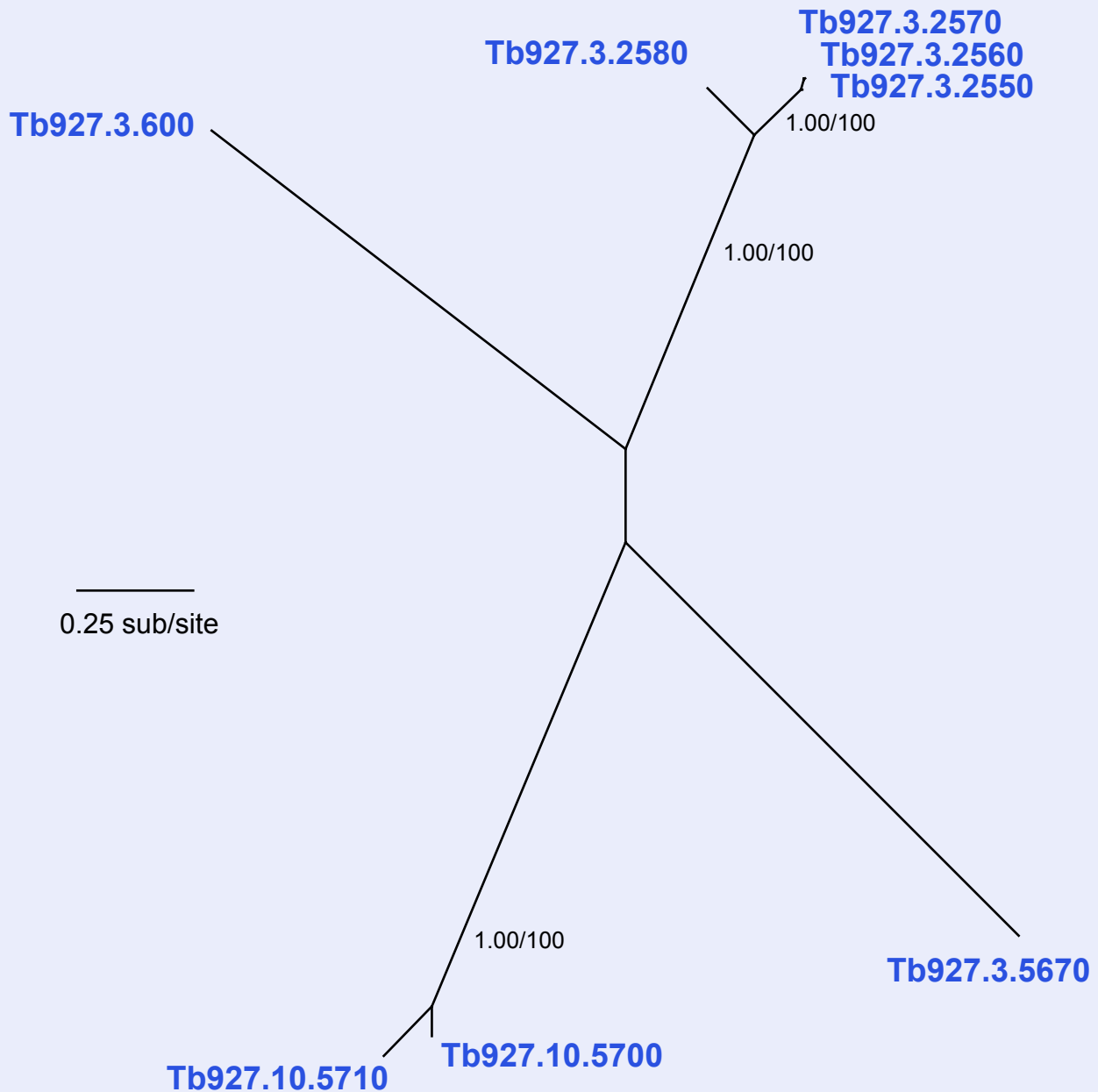


If you use this data, please cite:

Jackson, AP et al. 2012. A cell surface phylome for African Trypanosomes. *Manuscript submitted.*



Fam5: Putative membrane protein



NOTES: Fam5 loci are located at multiple strand-switch regions within core chromosomal regions. All members encode hypothetical proteins with predicted signal peptides.

The Bayesian phylogram was estimated from a multiple nucleotide sequence alignment of 706bp, using MrBayes with a GTR+ Γ model and default settings. The tree is unrooted. Selected nodes are supported by posterior probabilities and non-parametric bootstraps generated from a maximum likelihood analysis under a GTR+ Γ model with rate heterogeneity.