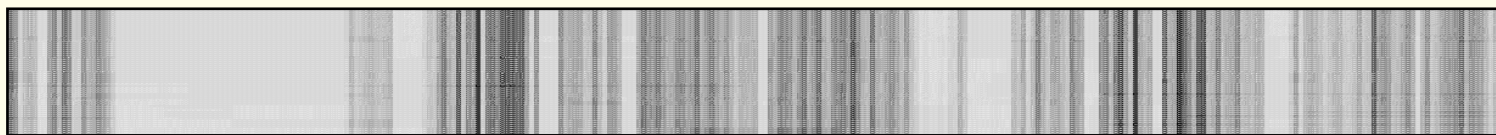
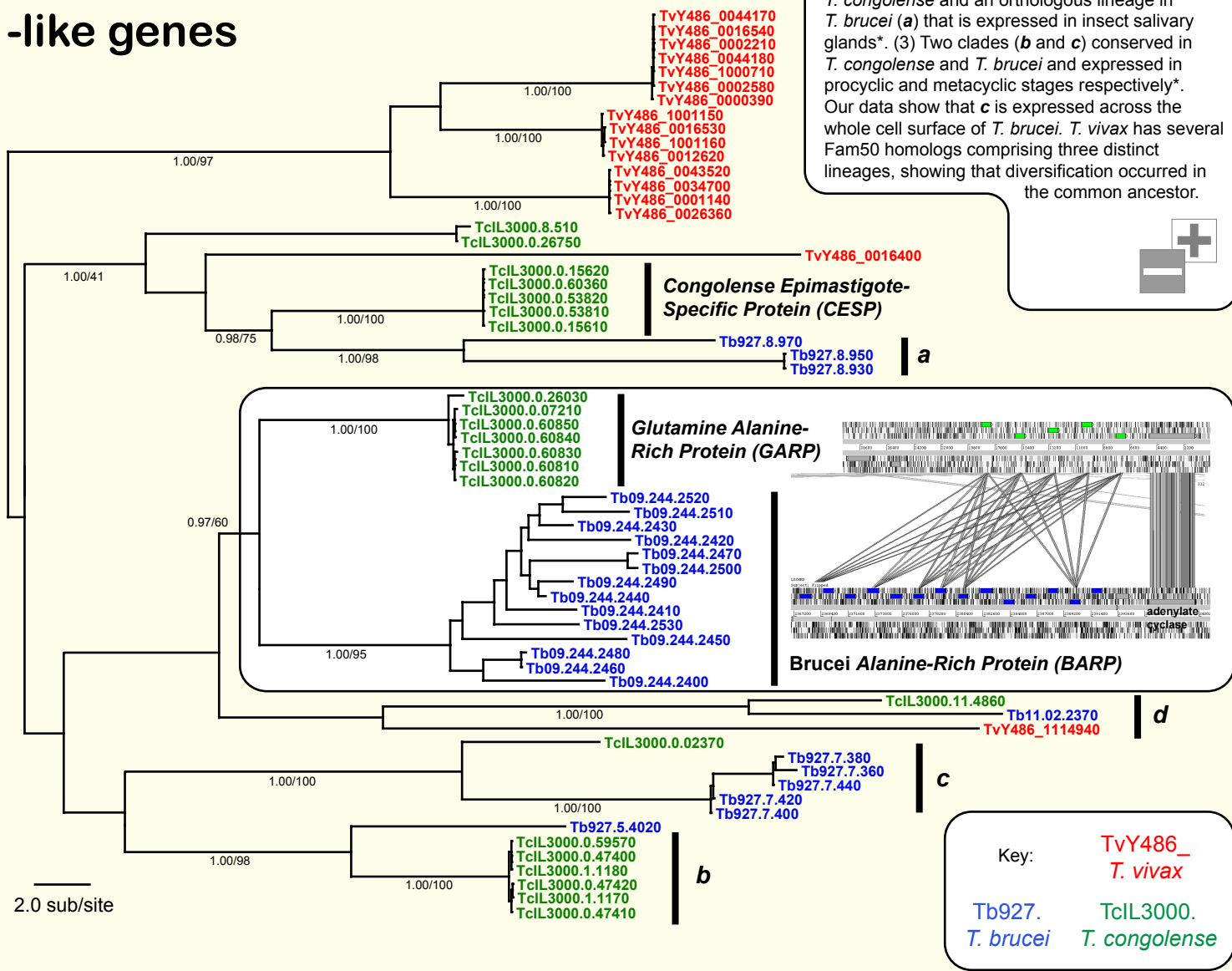


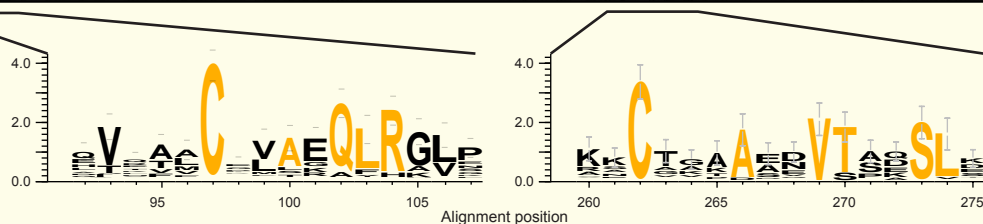
If you use these data, please cite:

Jackson, AP et al. 2012. A cell-surface phylome for African trypanosomes, *manuscript submitted*.

Fam50: BARP/GARP -like genes



Conserved sequence motifs unite *BARP*, *GARP* and their *T. vivax* homologs with other uncharacterized genes with insect stage-specific expression. The second region (262-274) contains a ubiquitous cysteine residue, followed by a VTxxSL motif, which is diagnostic of the all **Fam50** proteins.



NOTES: The Bayesian phylogram was estimated from a multiple protein sequence alignment of 307 characters, using MrBayes under default settings. The tree is mid-point rooted. Selected nodes are supported by posterior probability values and non-parametric bootstraps generated from a maximum likelihood analysis using an LG model with rate heterogeneity.