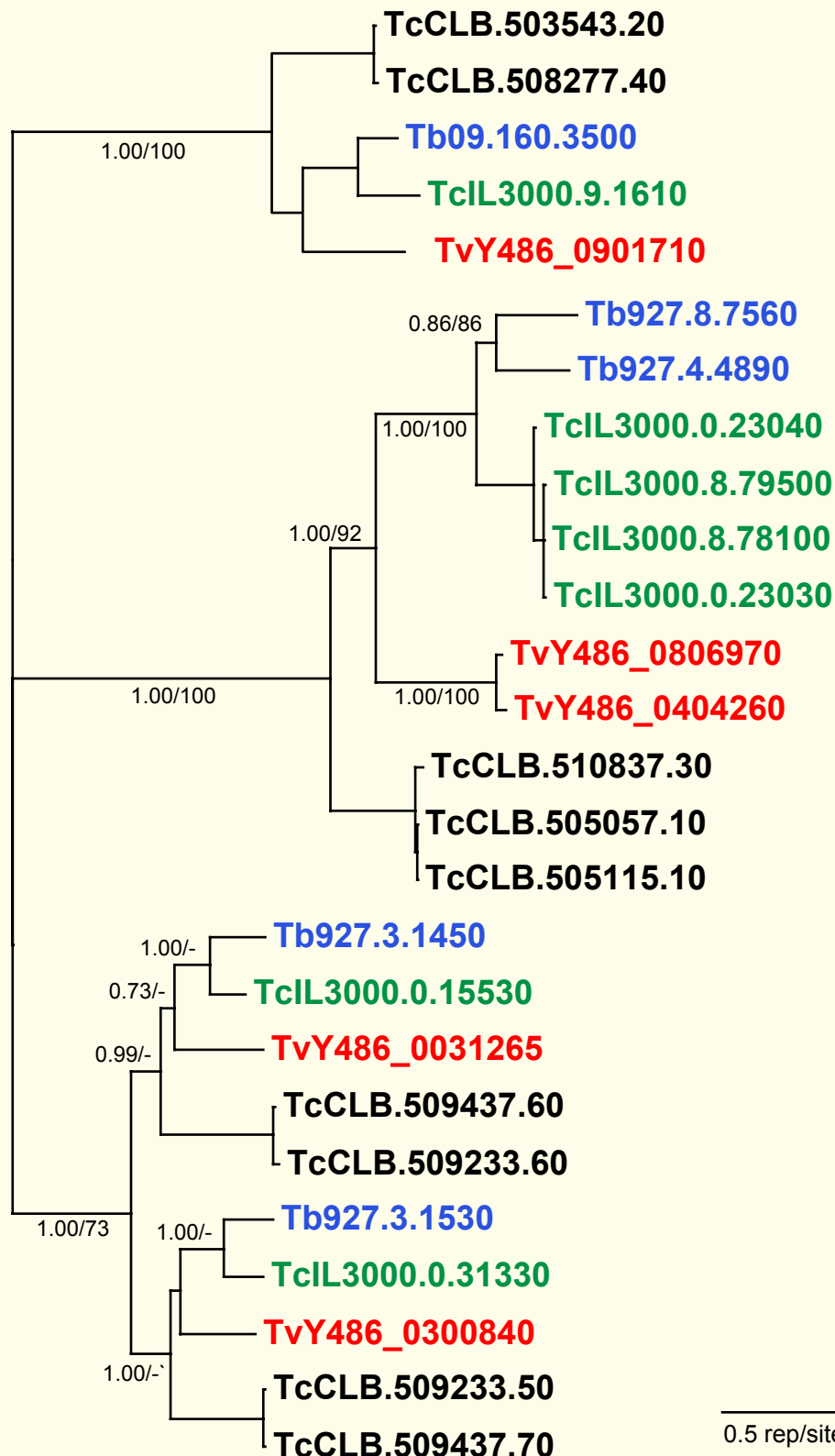


If you use these data, please cite:

Jackson, AP et al. 2012. A cell surface phylome for African Trypanosomes. *Manuscript submitted.*

Fam55: Metal ion transporter



Key: Tb927.
T. brucei

TvY486_Y486_
T. vivax

TcIL3000.
T. congolense

TcCLB.
T. cruzi

NOTES: Fam55 comprises four transmembrane transporters of cations conserved across *Trypanosoma*. There is currently no annotated ortholog in *T. vivax* for Tb09.160.3990.

The Bayesian phylogram was estimated from a multiple protein sequence alignment of 497 characters, using MrBayes under default settings. The tree is mid-point rooted. Selected nodes are supported by posterior probability values and non-parametric bootstraps generated from a maximum likelihood analysis using an LG model with rate heterogeneity.