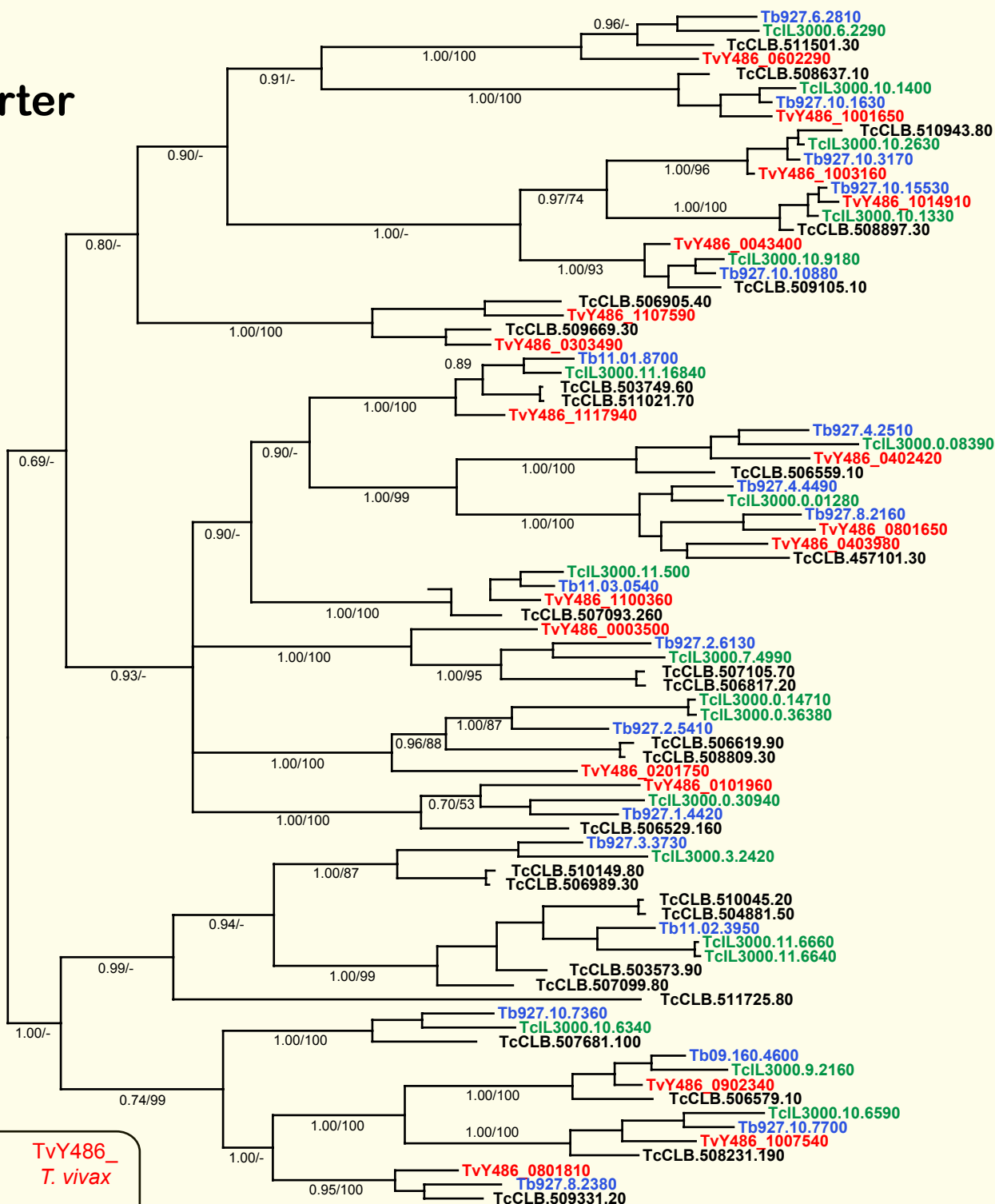


If you use these data, please cite:

Jackson, AP et al. 2012. A cell surface phylome for African Trypanosomes. *Manuscript submitted.*

Fam56: ABC transporter

0.2 rep/site



NOTES: Fam56 consists of various ABC transporter genes conserved across *Trypanosoma*. All genes have multiple transmembrane helices.

The Bayesian phylogram was estimated from a multiple protein sequence alignment of 261 characters, using MrBayes under default settings. The tree is mid-point rooted. Selected nodes are supported by posterior probability values and non-parametric bootstraps generated from a maximum likelihood analysis using an LG model with rate heterogeneity.