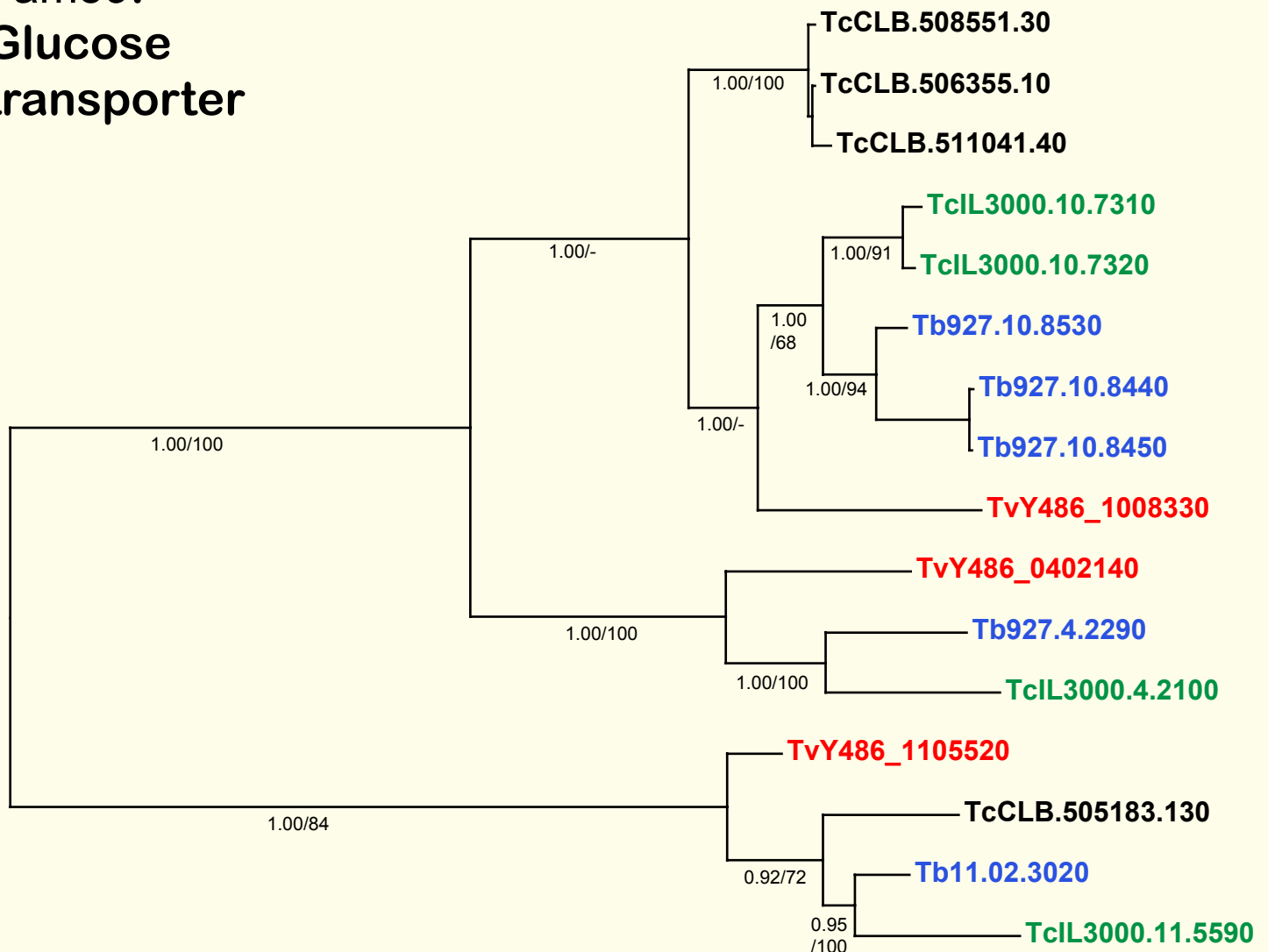


If you use these data, please cite:

Jackson, AP et al. 2012. A cell surface phylome for African Trypanosomes. *Manuscript submitted.*

Fam59: Glucose transporter



0.1 sub/site

Key: Tb927.
T. brucei
TvY486_
T. vivax
TcIL3000.
T. congolense
TcCLB.
T. cruzi

NOTES: Fam59 consists of various hexose transporter genes conserved across *Trypanosoma*. All genes have multiple transmembrane helices.

The Bayesian phylogram was estimated from a multiple nucleotide sequence alignment of 1584 characters, using MrBayes under default settings. The tree is rooted using divergent *T. cruzi* sequences as an outgroup. Selected nodes are supported by posterior probabilities and non-parametric bootstraps generated from a maximum likelihood analysis under a GTR+ Γ model.