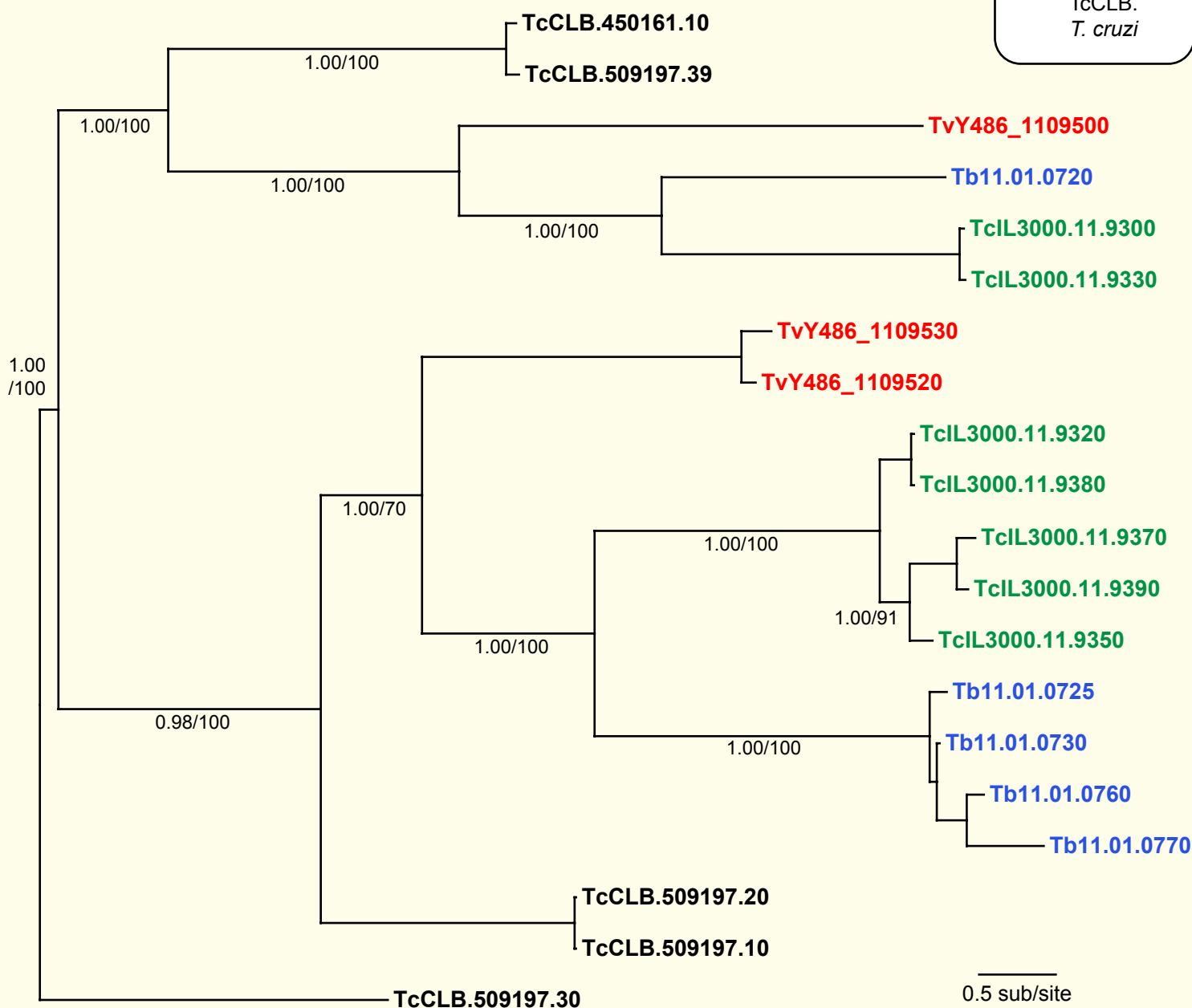


If you use these data, please cite:

Jackson, AP et al. 2012. A cell surface phylome for African Trypanosomes. *Manuscript submitted.*

## Fam62: Cation transporter

Key: Tb927.  
*T. brucei*  
TvY486\_  
*T. vivax*  
TcIL3000.  
*T. congolense*  
TcCLB.  
*T. cruzi*



**NOTES:** Fam62 consists of various cation transporter genes conserved across *Trypanosoma*. All genes have multiple transmembrane helices.

The Bayesian phylogram was estimated from a multiple nucleotide sequence alignment of 1084 characters, using MrBayes under default settings. The tree is rooted using divergent *T. cruzi* sequences as an outgroup. Selected nodes are supported by posterior probabilities and non-parametric bootstraps generated from a maximum likelihood analysis under a GTR+ $\Gamma$  model.