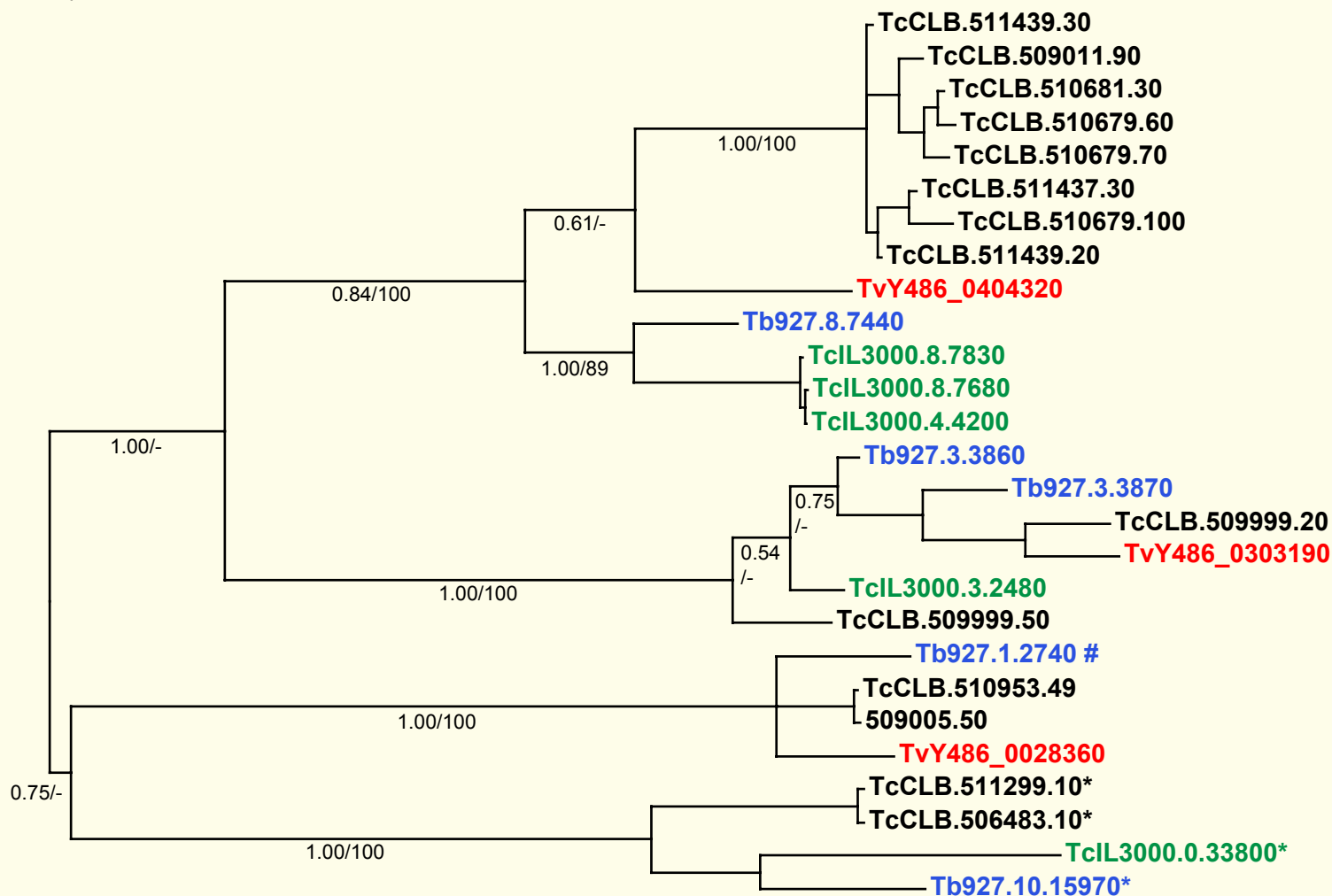


If you use these data, please cite:

Jackson, AP et al. 2012. A cell surface phylome for African Trypanosomes. *Manuscript submitted.*

## Fam63: Lipase



Key: Tb927.927.  
*T. brucei*

TvY486\_  
*T. vivax*

TcIL3000.  
*T. congolense*

TcCLB.  
*T. cruzi*

**NOTES:** Fam63 includes various putative lipase genes conserved across *Trypanosoma*. All genes, with the exception of the clade marked with an asterisk \* have multiple transmembrane helices. One sequence marked with a crosshatch # has a predicted signal peptide.

The Bayesian phylogram was estimated from a multiple protein sequence alignment of 274 characters, using MrBayes under default settings. The tree is mid-point rooted on the most divergent clade. Selected nodes are supported by posterior probability values and non-parametric bootstraps generated from a maximum likelihood analysis using an LG model with rate heterogeneity.