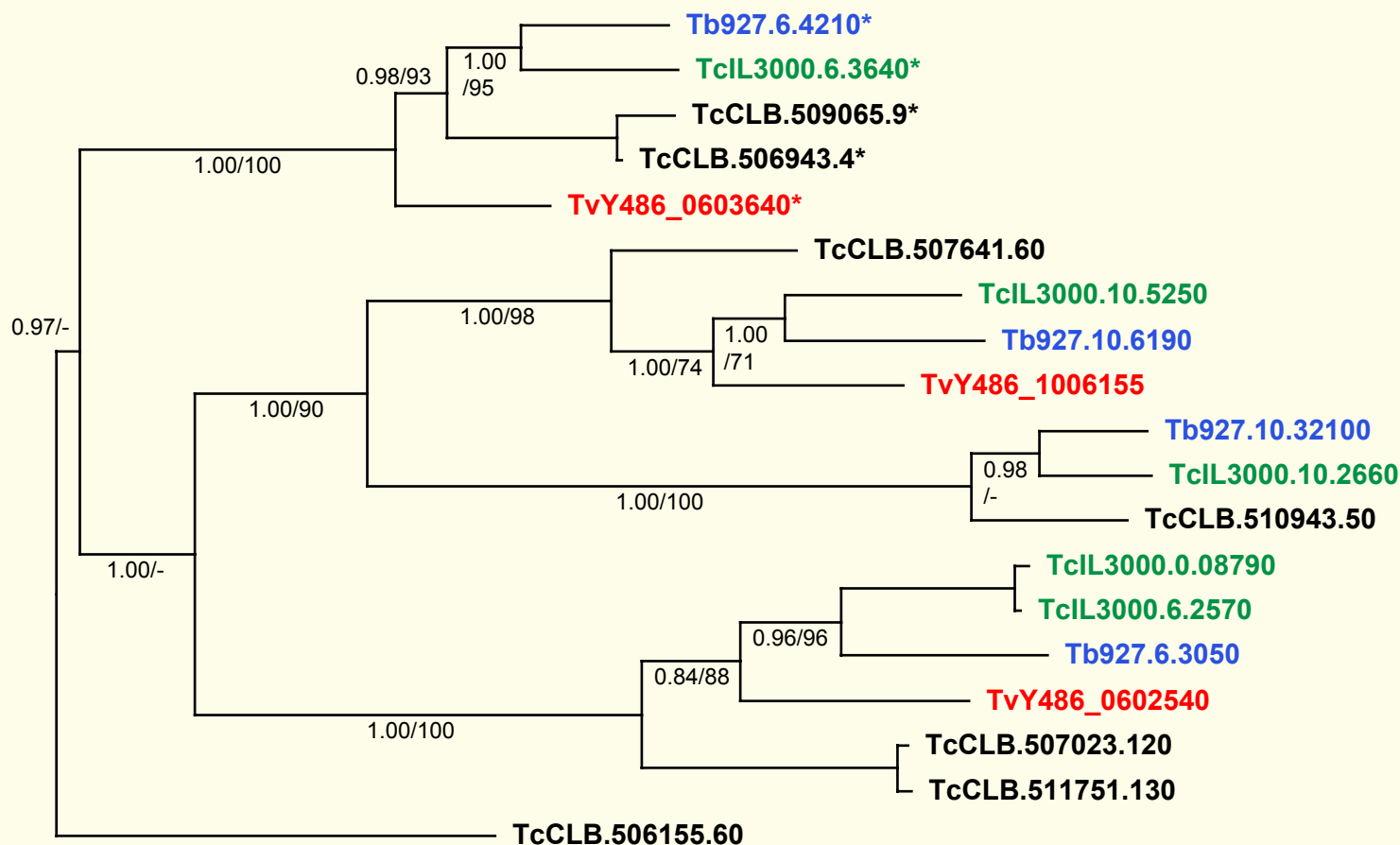


If you use these data, please cite:

Jackson, AP et al. 2012. A cell surface phylome for African Trypanosomes. *Manuscript submitted.*

## Fam65: Aldehyde dehydrogenase



0.2 sub/site

Key: Tb927.  
*T. brucei*  
TvY486\_  
*T. vivax*  
TcIL3000.  
*T. congolense*  
TcCLB.  
*T. cruzi*

**NOTES:** Fam65 includes various putative dehydrogenase genes conserved across *Trypanosoma*. All genes marked with an asterisk \* have predicted signal peptides.

The Bayesian phylogram was estimated from a multiple nucleotide sequence alignment of 1072 characters, using MrBayes under default settings. The tree is mid-point rooted on the most divergent clade. Selected nodes are supported by posterior probabilities and non-parametric bootstraps generated from a maximum likelihood analysis under a GTR+ $\Gamma$  model.