

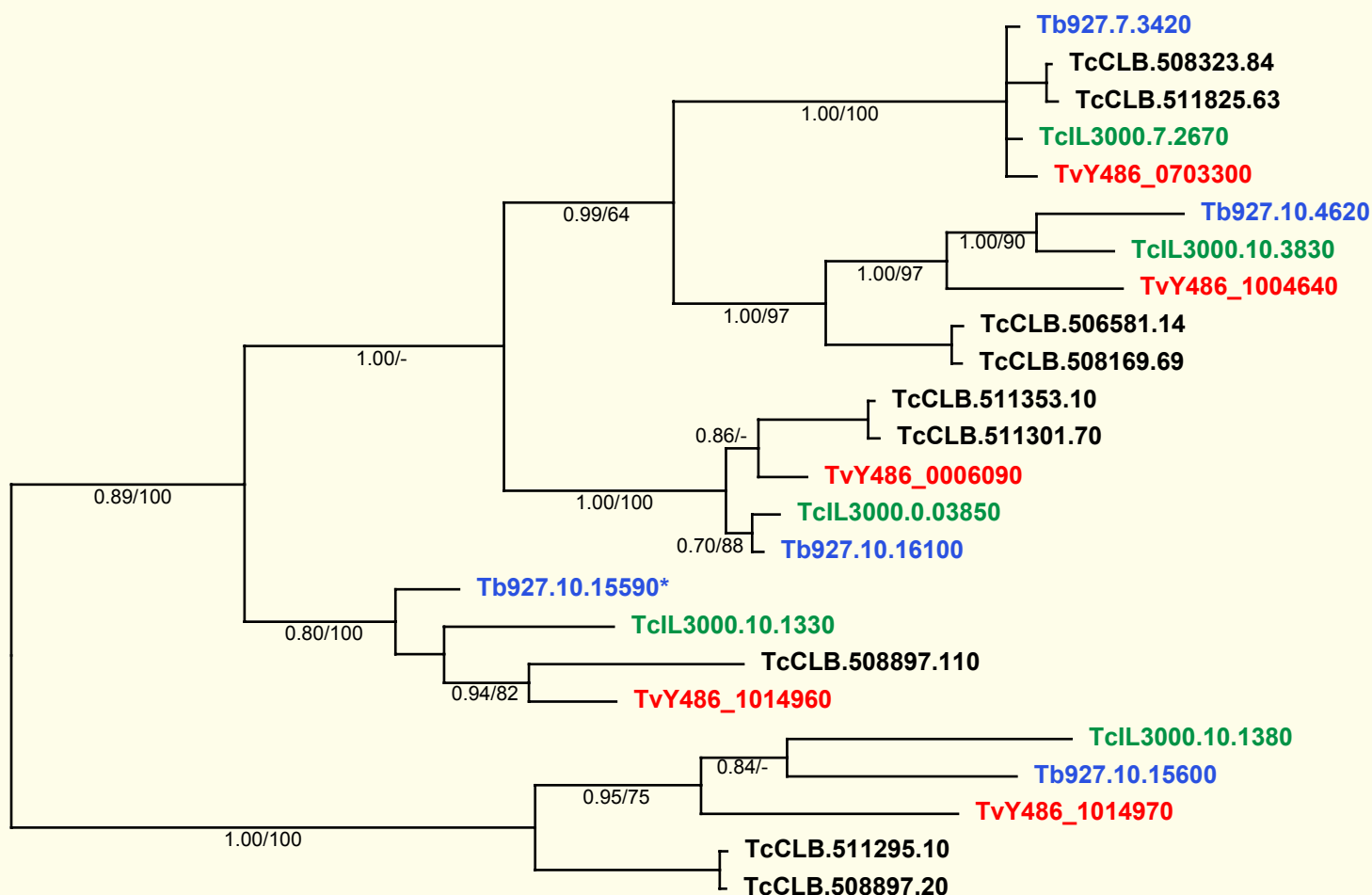
If you use these data, please cite:

Jackson, AP et al. 2012. A cell surface phylome for African Trypanosomes. *Manuscript submitted.*

## Fam69: Peptidyl-prolyl cis-trans isomerase (FKBP-type)

Key: Tb927.  
*T. brucei*  
TvY486\_  
*T. vivax*  
TcIL3000.  
*T. congolense*  
TcCLB.  
*T. cruzi*

0.25 sub/site



**NOTES:** Fam69 comprises a family of peptidyl-prolyl cis-trans isomerase genes that encode FKBP-type proteins which are predominantly expressed within the cell. However, one of these predicted proteins in *T. brucei* has a signal peptide and this is marked with an asterisk \*.

The Bayesian phylogram was estimated from a multiple nucleotide sequence alignment of 453 characters, using MrBayes under default settings. The tree is mid-point rooted on the most divergent clade. Selected nodes are supported by posterior probabilities and non-parametric bootstraps generated from a maximum likelihood analysis under a GTR+ $\Gamma$  model.