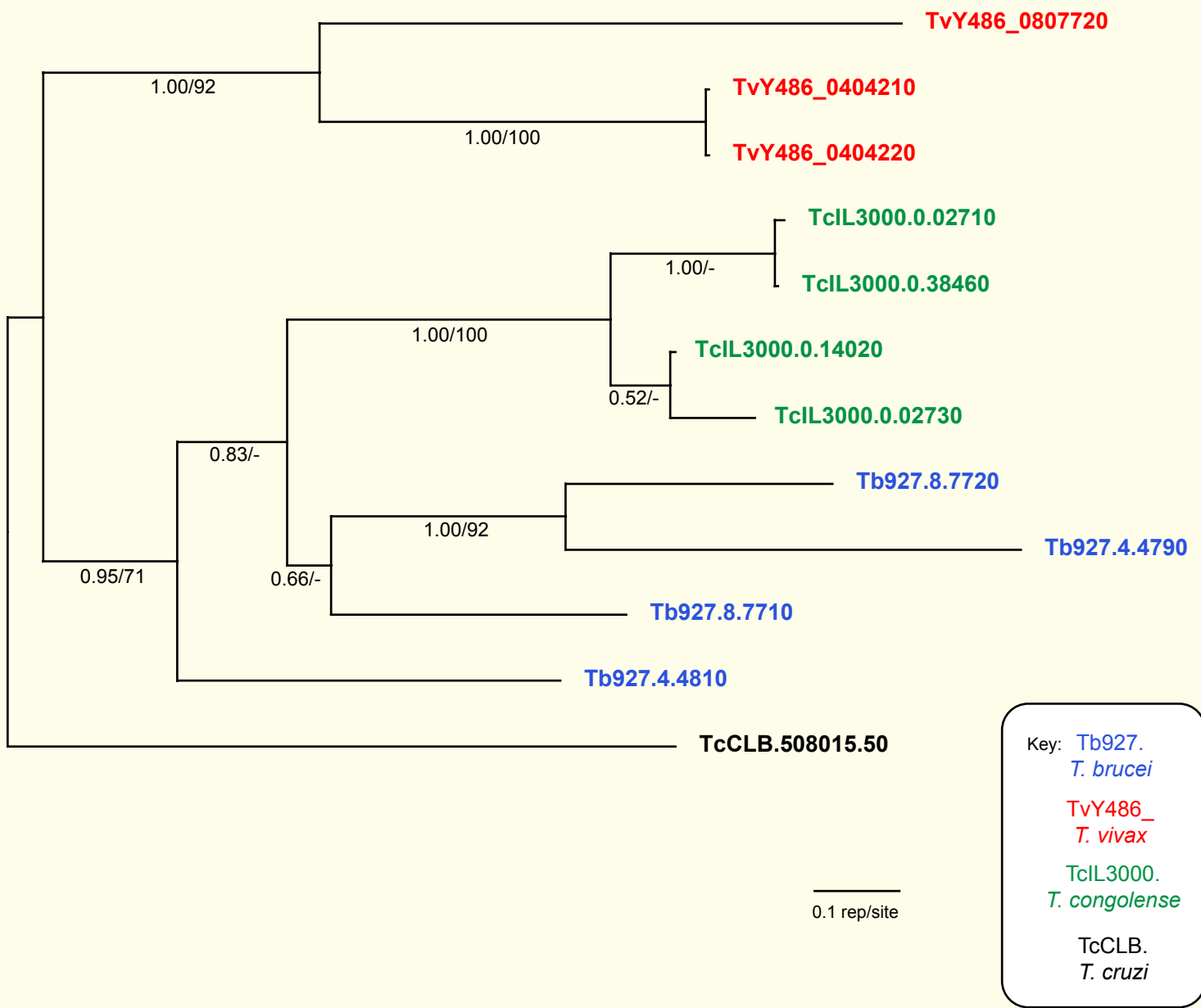


If you use these data, please cite:

Jackson, AP et al. 2012. A cell surface phylome for African Trypanosomes. *Manuscript submitted.*

Fam70: Hypothetical transmembrane protein



NOTES: Fam70 comprises a family of genes encoding hypothetical proteins, all of which have predicted transmembrane domains and signal peptides.

The Bayesian phylogram was estimated from a multiple protein sequence alignment of 235 characters, using MrBayes under default settings. The tree is mid-point rooted on the most divergent clade. Selected nodes are supported by posterior probability values and non-parametric bootstraps generated from a maximum likelihood analysis using an LG model with rate heterogeneity.