

If you use these data, please cite:

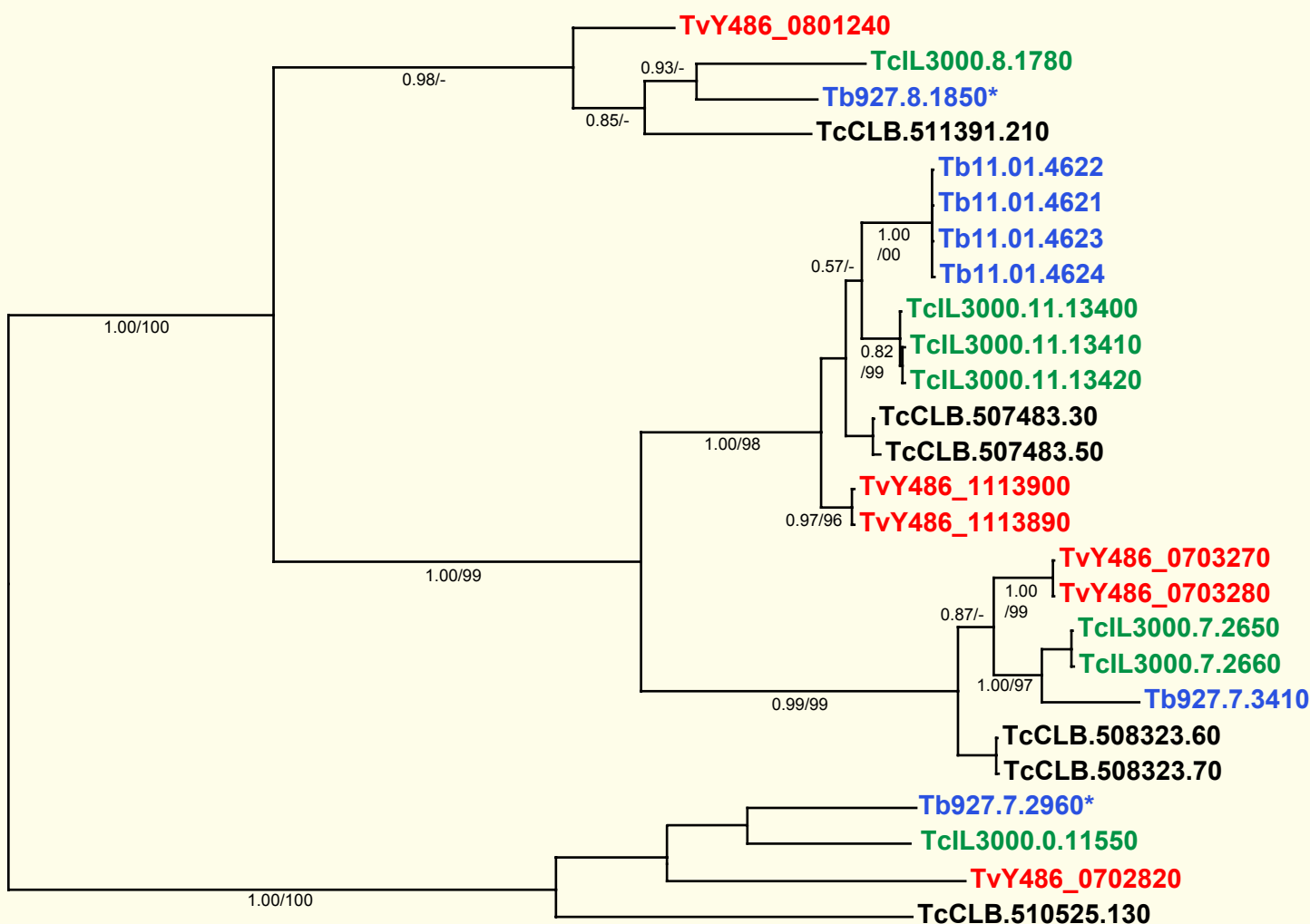
Jackson, AP et al. 2012. A cell surface phylome for African Trypanosomes. *Manuscript submitted.*



Fam71: Calcium-binding proteins

Key: Tb927.
T. brucei
TvY486_
T. vivax
TcIL3000.
T. congolense
TcCLB.
T. cruzi

0.1 sub/site



NOTES: Fam71 genes encode proteins containing the EF-hand calcium-binding domain, and include calmodulin and centrin genes that are expressed within the cell. However, two uncharacterized family members (*T. brucei* ortholog is marked with an asterisk) have predicted signal peptides.

The Bayesian phylogram was estimated from a multiple nucleotide sequence alignment of 663 characters, using MrBayes under default settings. The tree is mid-point rooted on the most divergent clade. Selected nodes are supported by posterior probabilities and non-parametric bootstraps generated from a maximum likelihood analysis under a GTR+I model.