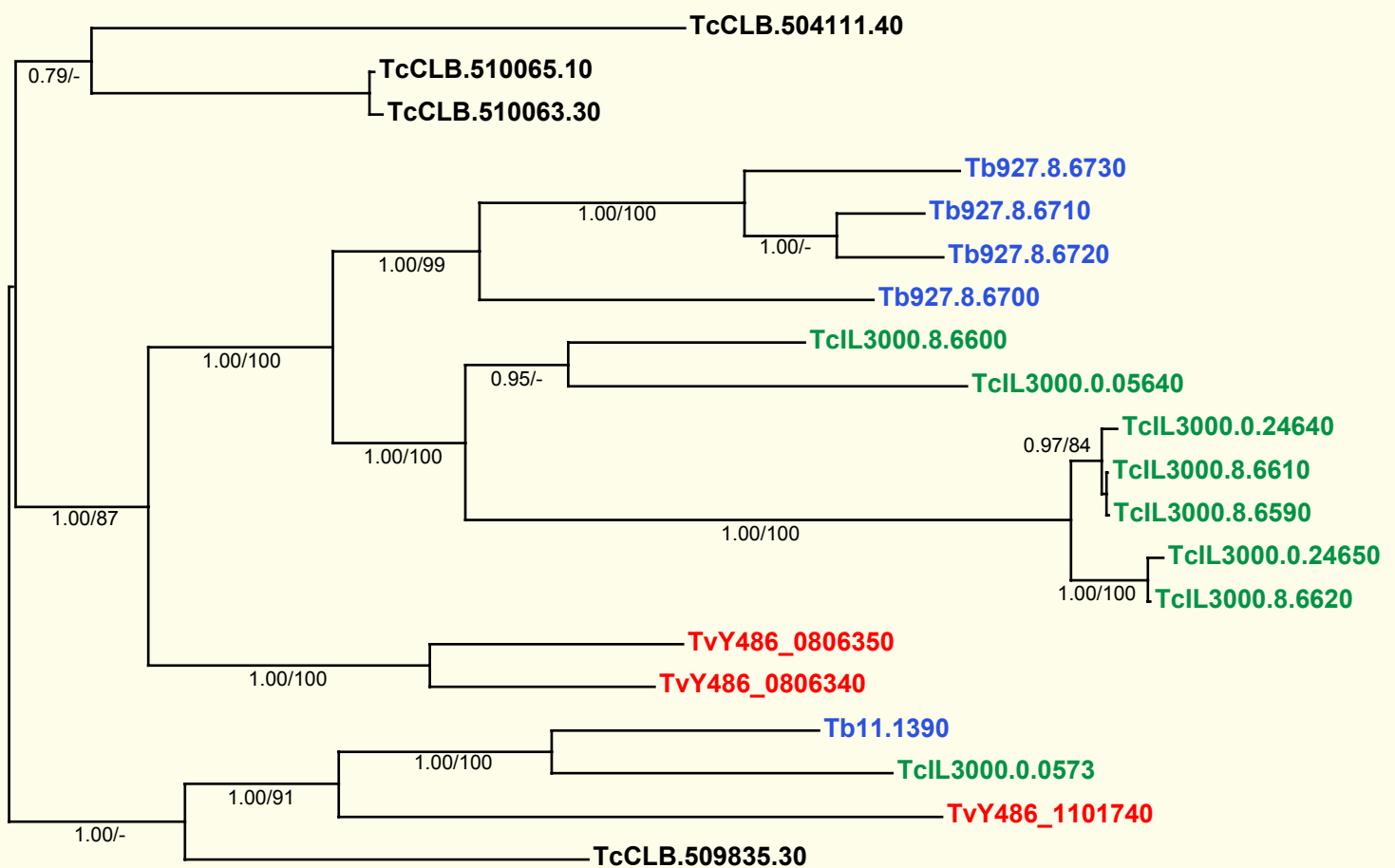


If you use these data, please cite:

Jackson, AP et al. 2012. A cell surface phylome for African Trypanosomes. *Manuscript submitted.*

Fam72: Hypothetical transmembrane protein



Key: **Tb927.**
T. brucei
TvY486_
T. vivax
TcIL3000.
T. congolense
TcCLB.
T. cruzi

NOTES: Fam72 comprises a family of protein kinase genes conserved across *Trypanosoma*. All genes have predicted signal peptides and multiple transmembrane domains.

The Bayesian phylogram was estimated from a multiple nucleotide sequence alignment of 1365 characters, using MrBayes under default settings. The tree is mid-point rooted. Selected nodes are supported by posterior probabilities and non-parametric bootstraps generated from a maximum likelihood analysis under a GTR+ Γ model.