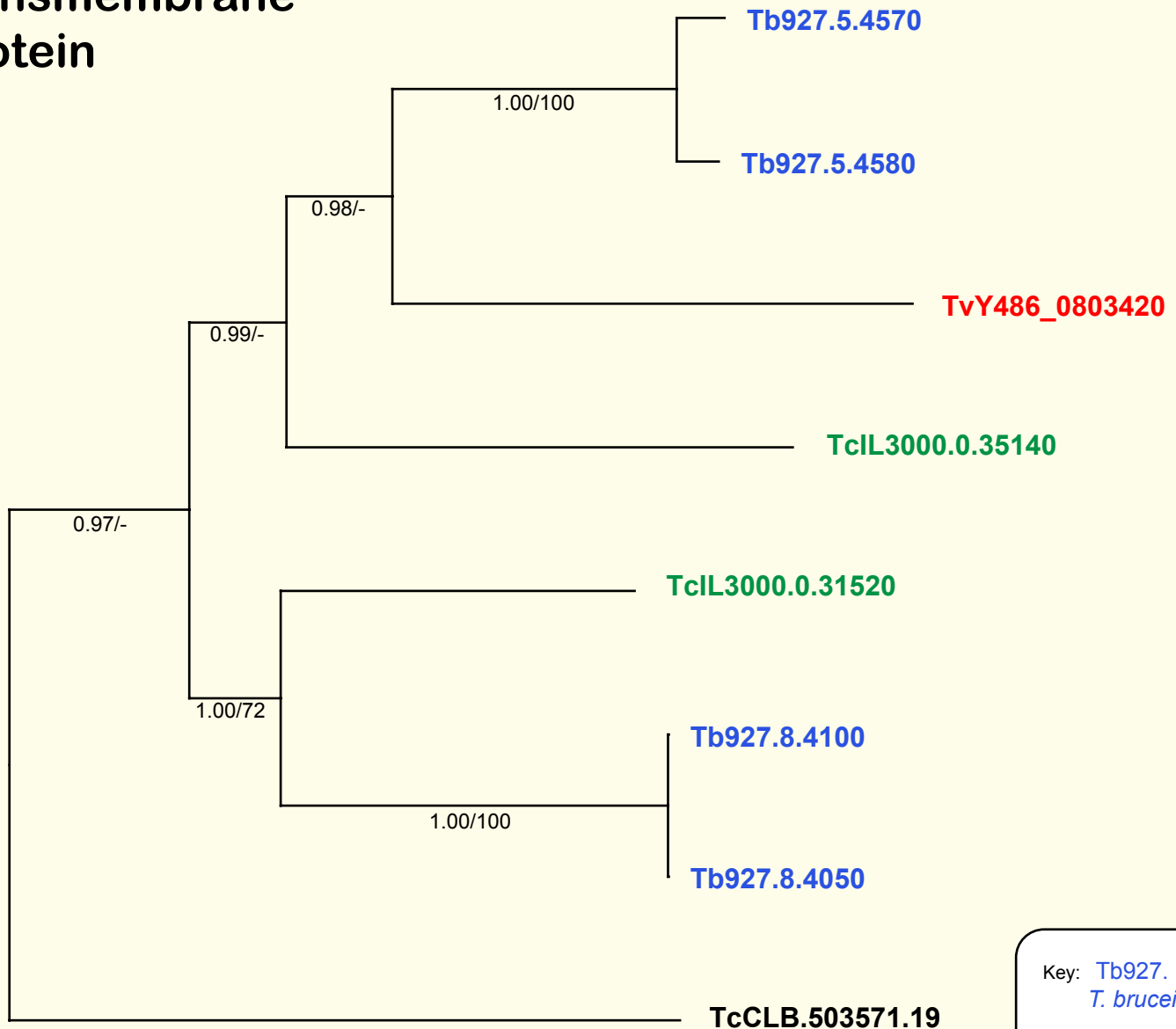


If you use these data, please cite:

Jackson, AP et al. 2012. A cell surface phylome for African Trypanosomes. *Manuscript submitted.*

Fam73: Hypothetical transmembrane protein



Key: Tb927.
T. brucei
TvY486_
T. vivax
TcIL3000.
T. congolense
TcCLB.
T. cruzi

NOTES: Fam73 comprises a family of genes encoding hypothetical proteins, all of which have predicted transmembrane domains at both peptide termini.

The Bayesian phylogram was estimated from a multiple nucleotide sequence alignment of 2388 characters, using MrBayes under default settings. The tree is mid-point rooted on the most divergent clade. Selected nodes are supported by posterior probabilities and non-parametric bootstraps generated from a maximum likelihood analysis under a GTR+ Γ model.