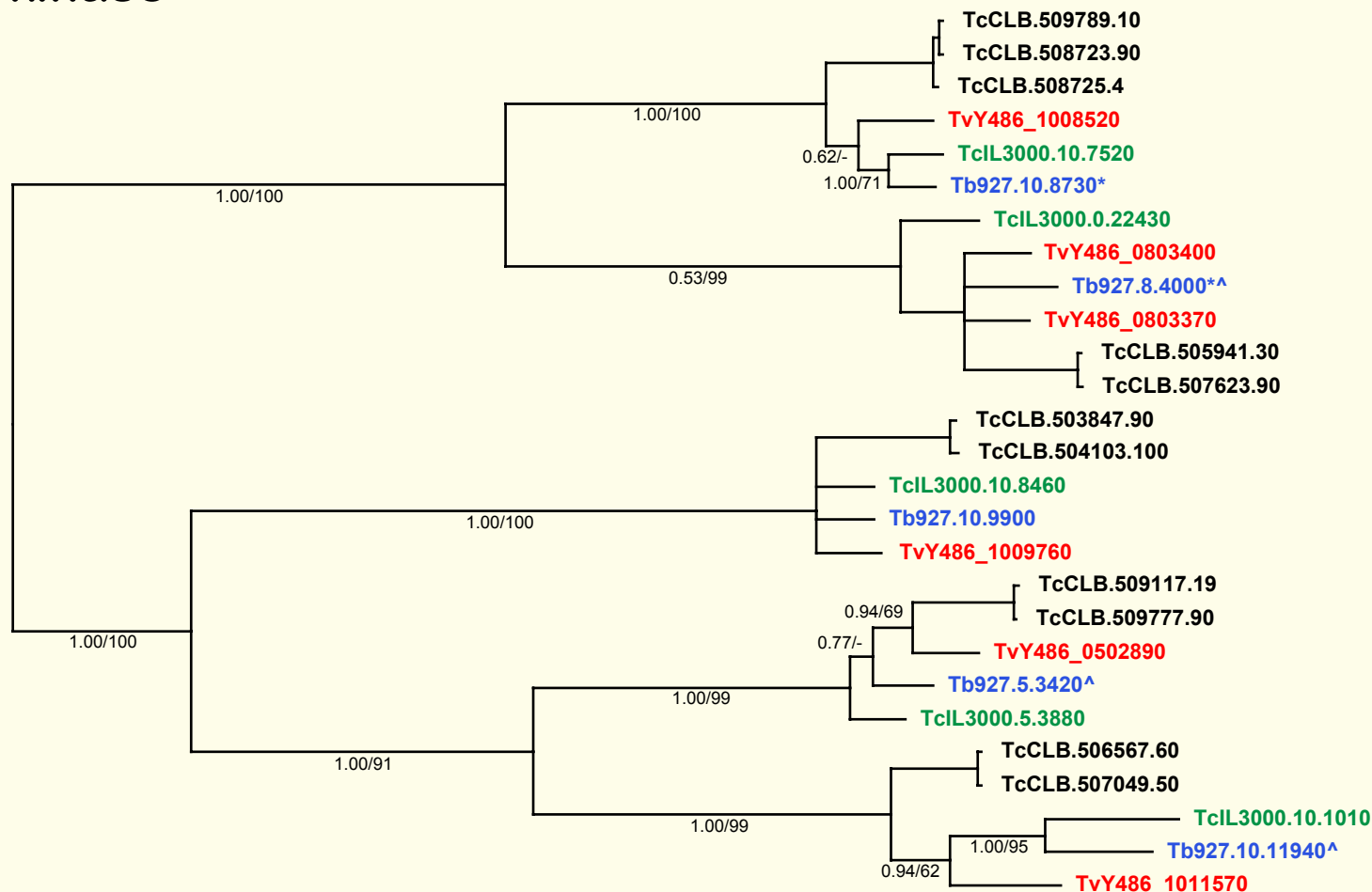


If you use these data, please cite:

Jackson, AP et al. 2012. A cell surface phylome for African Trypanosomes. *Manuscript submitted.*

Fam74: Protein kinase



NOTES: Fam74 comprises a family of protein kinase genes conserved across *Trypanosoma*. In some cases these genes encode proteins with predicted signal peptides (*T. brucei* orthologs marked with an asterisk *), or transmembrane domains (*T. brucei* orthologs marked with an arrow ^)

The Bayesian phylogram was estimated from a multiple protein sequence alignment of 480 characters, using MrBayes under default settings. The tree is mid-point rooted on the most divergent clade. Selected nodes are supported by posterior probability values and non-parametric bootstraps generated from a maximum likelihood analysis using an LG model with rate heterogeneity.