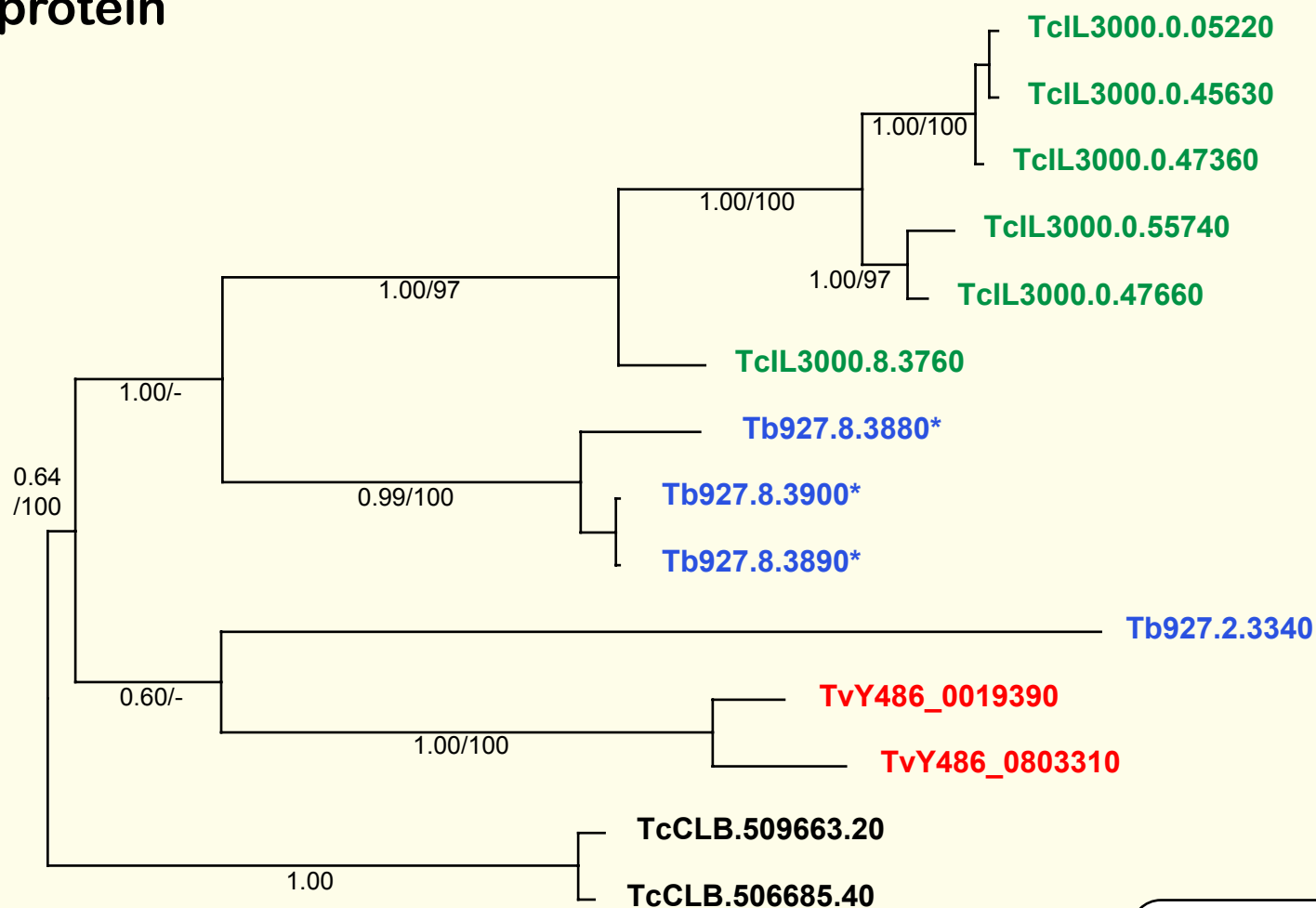


If you use these data, please cite:

Jackson, AP et al. 2012. A cell surface phylome for African Trypanosomes. *Manuscript submitted.*

Fam75: Hypothetical transmembrane protein



Key: Tb927.
T. brucei

TvY486_
T. vivax

TcIL3000.
T. congolense

TcCLB.
T. cruzi

0.1 sub/site

NOTES: Fam75 comprises a family of genes conserved across *Trypanosoma* at a single locus on chromosome 8. In addition, a single locus is unique to *T. brucei* and occurs at a strand-switch region on chromosome 2. They encode proteins with cysteine-rich, low complexity regions that could affect the accuracy of transmembrane domain prediction. Only the *T. brucei* genes on chromosome 8 (marked with asterisks) are predicted to have two transmembrane domains at the N-terminus.

The Bayesian phylogram was estimated from a multiple nucleotide sequence alignment of 1365 characters, using MrBayes under default settings. The tree is rooted with *T. cruzi* sequences. Selected nodes are supported by posterior probabilities and non-parametric bootstraps generated from a maximum likelihood analysis under a GTR+I⁺ model.