

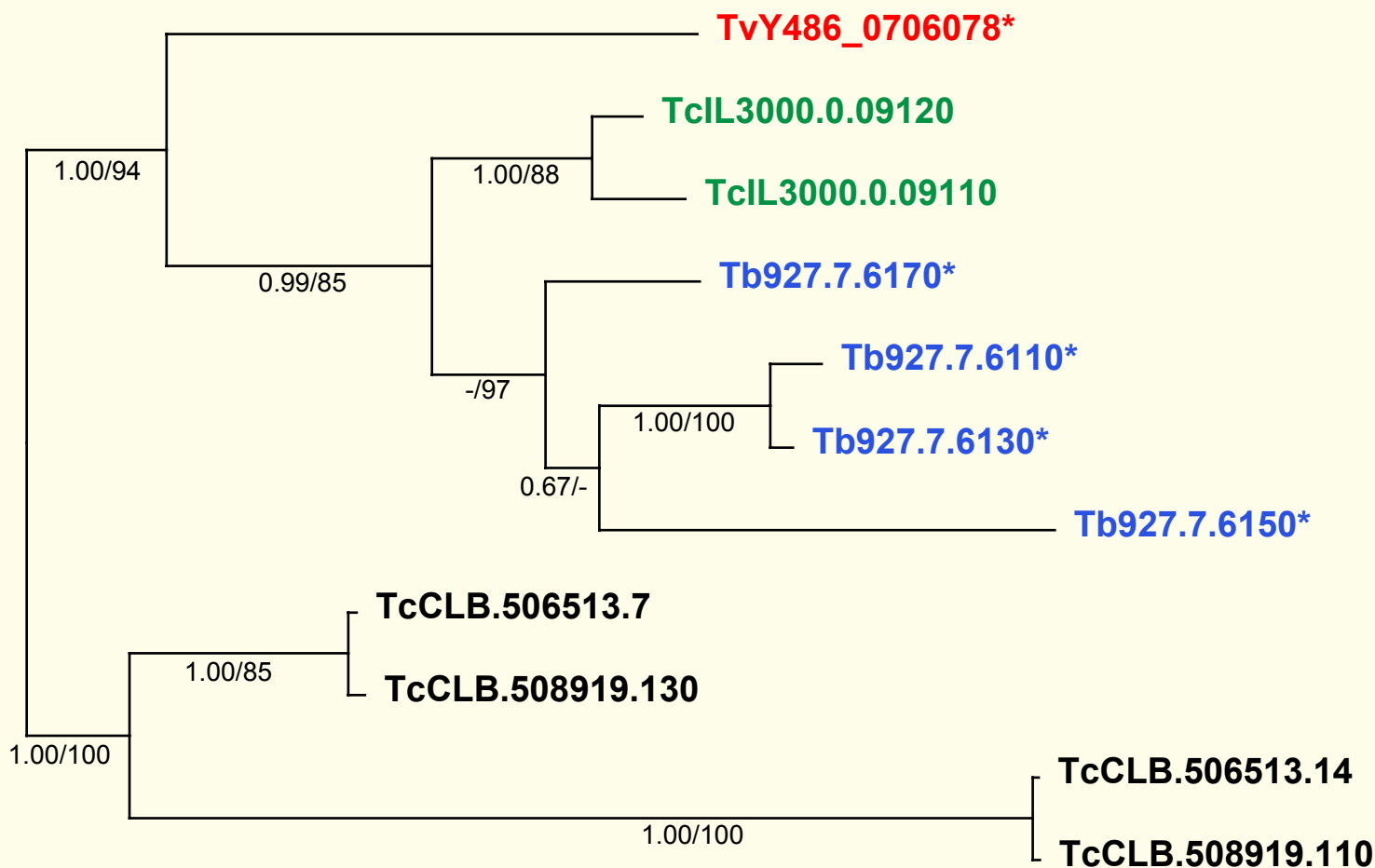
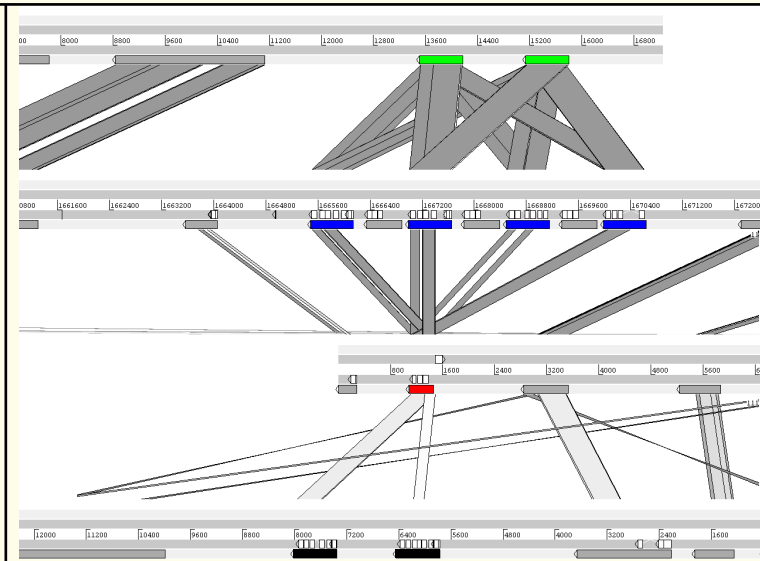
If you use these data, please cite:

Jackson, AP et al. 2012. A cell surface phylome for African Trypanosomes. *Manuscript submitted.*

# Fam78: Hypothetical membrane protein

Key: **Tb927.**  
*T. brucei*  
**TvY486\_**  
*T. vivax*  
**TcIL3000.**  
*T. congolense*  
**TcCLB.**  
*T. cruzi*

0.1 sub/site



**NOTES:** Fam78 comprises a family of genes conserved across *Trypanosoma* at a single, tandemly-arrayed locus (inset showing an ACT comparison in which vertical grey bars represent significant BLASTp matches and Fam78 members are coloured). All genes have multiple transmembrane domains, and some copies predicted signal peptides (marked with an asterisk \*).

The Bayesian phylogram was estimated from a multiple nucleotide sequence alignment of 612 characters, using MrBayes under default settings. The tree is rooted with *T. cruzi* sequences. Selected nodes are supported by posterior probabilities and non-parametric bootstraps generated from a maximum likelihood analysis under a GTR+ $\Gamma$  model.