

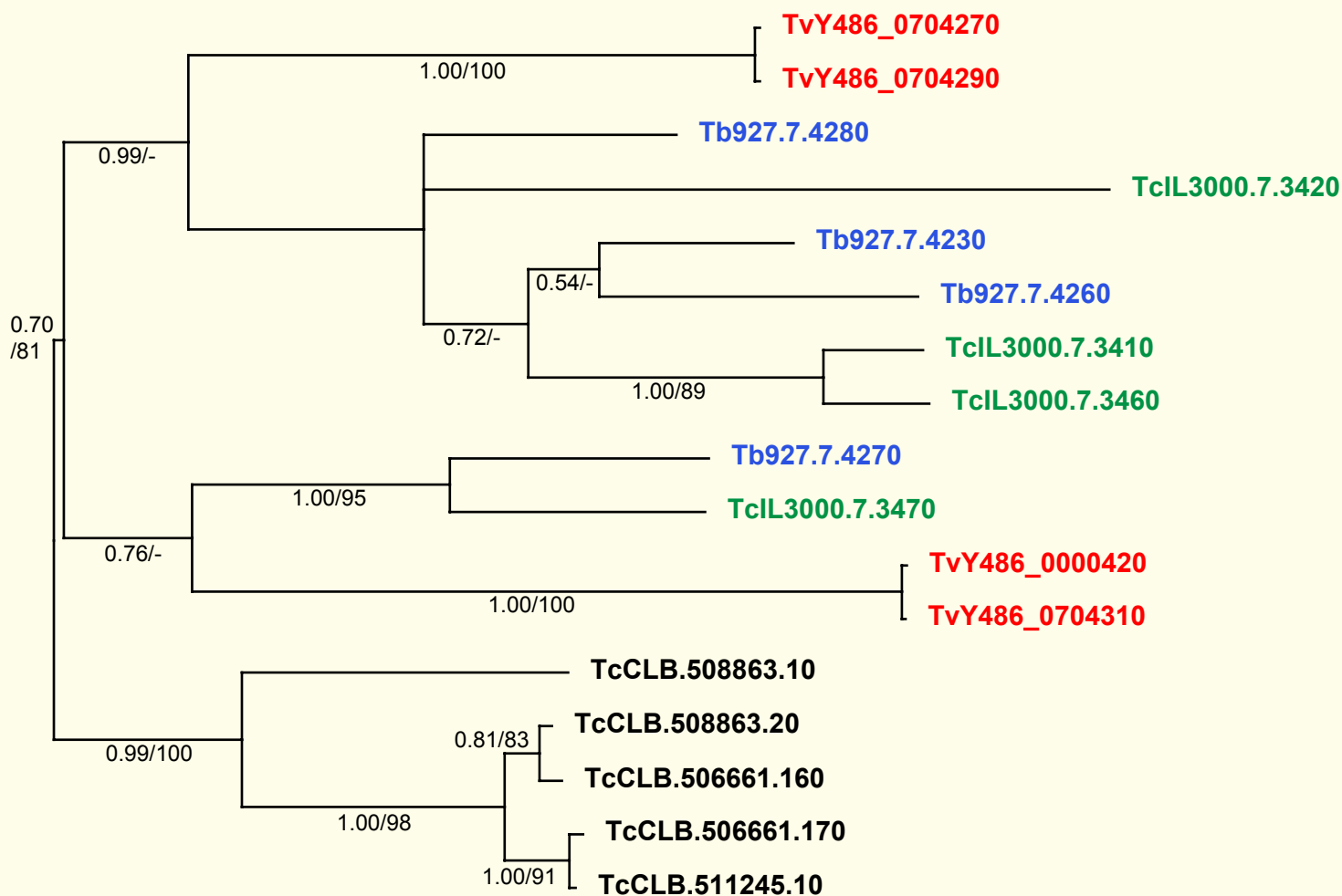
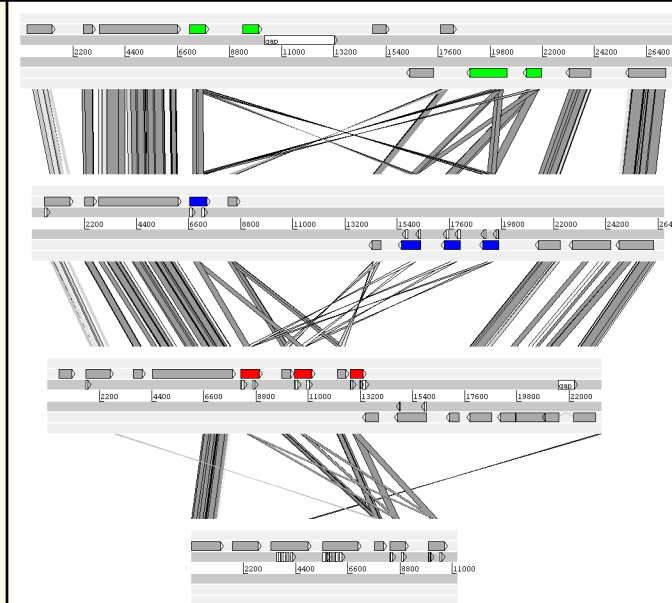
If you use these data, please cite:

Jackson, AP et al. 2012. A cell surface phylome for African Trypanosomes. *Manuscript submitted.*

# Fam79: Hypothetical transmembrane protein

Key: **Tb927.**  
*T. brucei*  
**TvY486\_**  
*T. vivax*  
**TcIL3000.**  
*T. congolense*  
500000.1  
*T. cruzi*

0.2 sub/site



**NOTES:** Fam79 comprises a family of genes conserved across *Trypanosoma*, in a single, tandemly-arrayed position around a strand-switch region (inset showing an ACT comparison in which vertical grey bars represent significant BLASTp matches and Fam79 members are coloured),

The Bayesian phylogram was estimated from a multiple nucleotide sequence alignment of 423 characters, using MrBayes under default settings. The tree is rooted with *T. cruzi* sequences. Selected nodes are supported by posterior probabilities and non-parametric bootstraps generated from a maximum likelihood analysis under a GTR+ $\Gamma$  model.