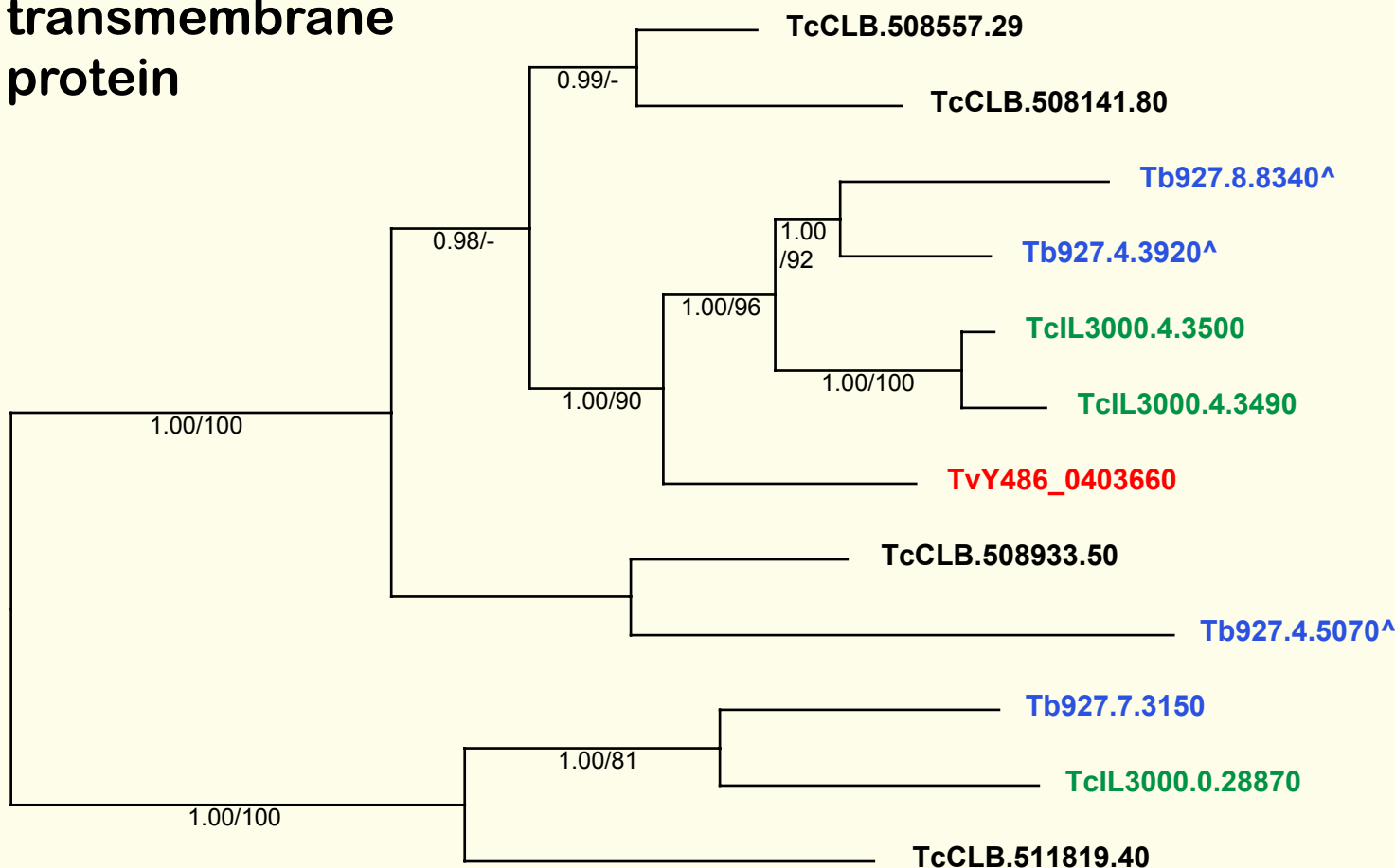


If you use these data, please cite:

Jackson, AP et al. 2012. A cell surface phylome for African Trypanosomes. *Manuscript submitted.*

Fam80: Hypothetical transmembrane protein



0.05 sub/site

Key: Tb927.
T. brucei
TvY486_
T. vivax
TcIL3000.
T. congolense
TcCLB.
T. cruzi

NOTES: Fam80 comprises a family of genes conserved across *Trypanosoma* at several loci. Some members of this family have predicted transmembrane domains towards their C-termini (*T. brucei* orthologs are marked with an arrow ^).

The Bayesian phylogram was estimated from a multiple nucleotide sequence alignment of 960 characters, using MrBayes under default settings. The tree is mid-point rooted on a divergent clade. Selected nodes are supported by posterior probabilities and non-parametric bootstraps generated from a maximum likelihood analysis under a GTR+ Γ model.