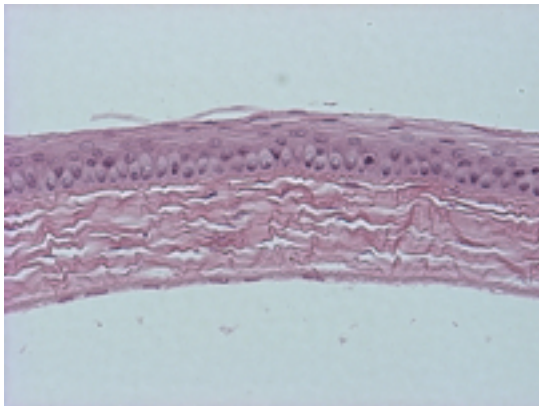


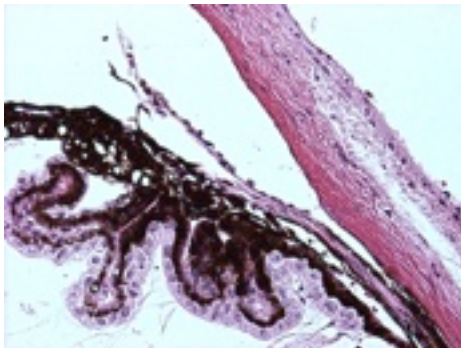
**Abnormal Findings:** The nerve appears somewhat small. There are frequent detachments of the internal limiting membrane; however this is occasionally seen during processing. Verification of this finding is recommended.

## EYE Phenotype



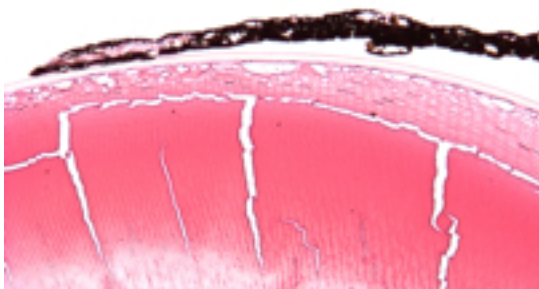
### Cornea:

**6/6.** Normal corneal epithelium, stroma, and endothelium.



### Anterior chamber:

**6/6.** The anterior chamber was of normal depth without cells, and the angle appeared open.

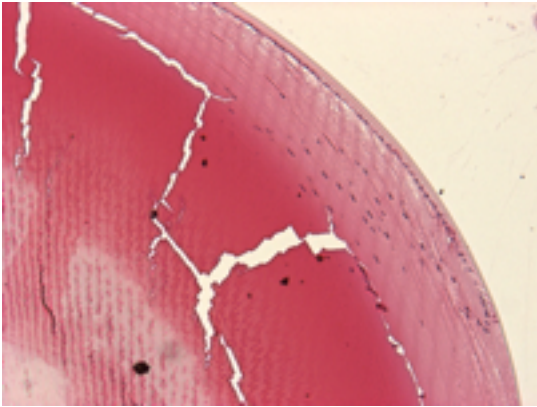


### Iris:

**6/6.** The iris showed normal pigmentation without rubeosis or pupillary membranes.

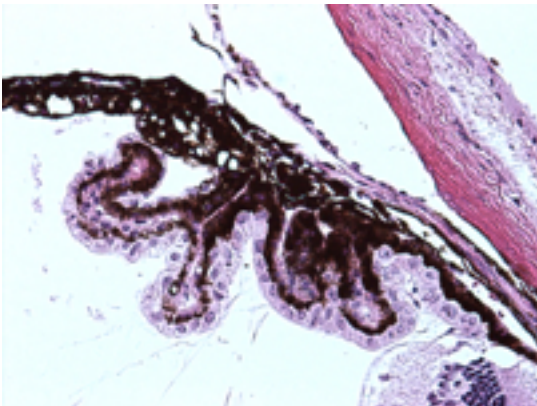
Sanger Colony: MAKV

---



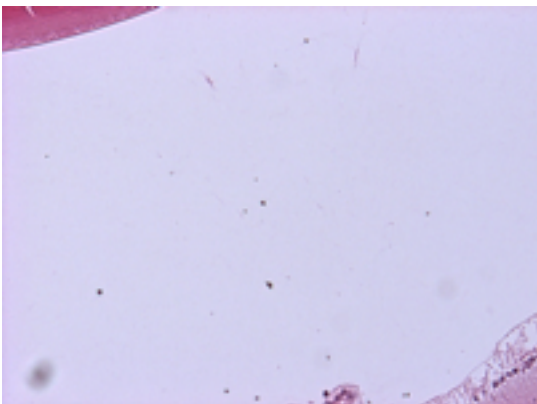
**Lens:**

**6/6.** No cataract was observed.



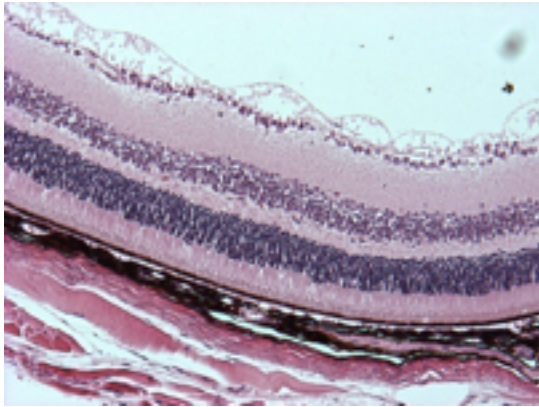
**Ciliary body:**

**6/6.** Normal stromal, pigmented and nonpigmented layers were present along with cilia.



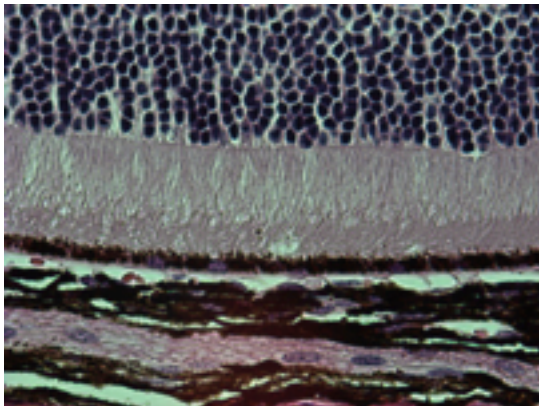
**Vitreous:**

**6/6.** No opacities, neovascularization, hemorrhage, or cells were observed.



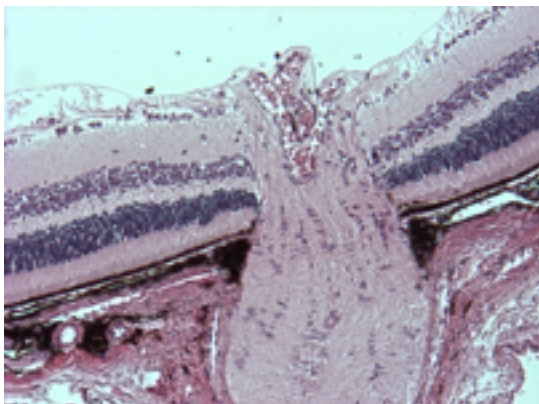
**Retina:**

**6/6.** The nerve fiber layer and internal limiting membrane are abnormal. The inner nuclear and photoreceptor layers are normal.



**Retinal pigment epithelium and Choroid:**

**6/6.** Normal pigmentation. No neovascular membranes were noted.



**Optic Nerve:**

**6/6.** The nerve appears (mild) small. The nerve fiber layer is thin with detachments of the internal limiting membrane.

**Methods.** 6 eyes from 3 male mice were enucleated by blunt dissection and fixed. Pupil-optic nerve sections were processed with hematoxylin and eosin, and standard images were captured under light microscopy for review.