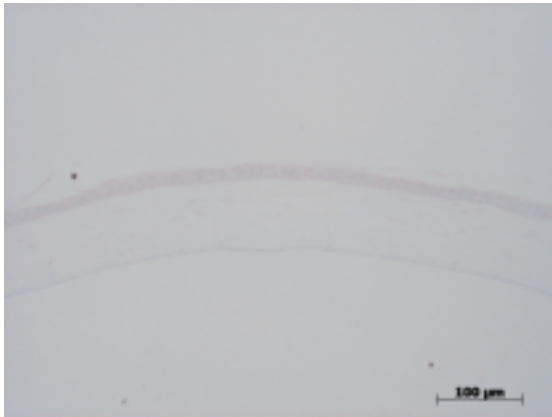


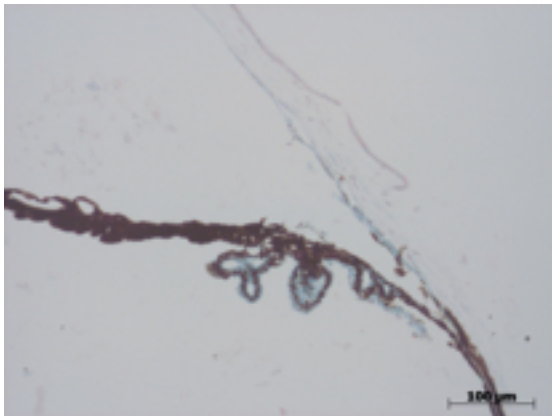
Abnormal Findings: None.

EYE Phenotype



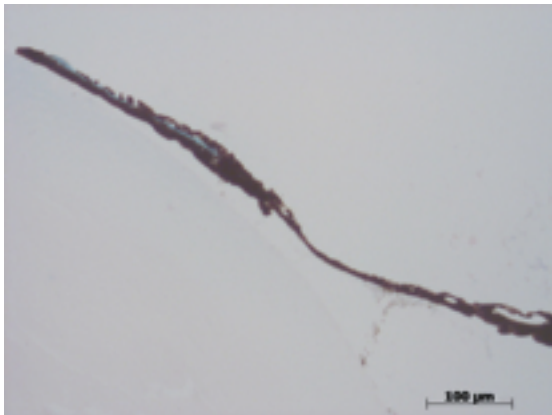
Cornea:

1/1. Normal corneal epithelium, stroma, and endothelium.



Anterior chamber:

1/1. The anterior chamber was of normal depth without cells, and the angle appeared open.



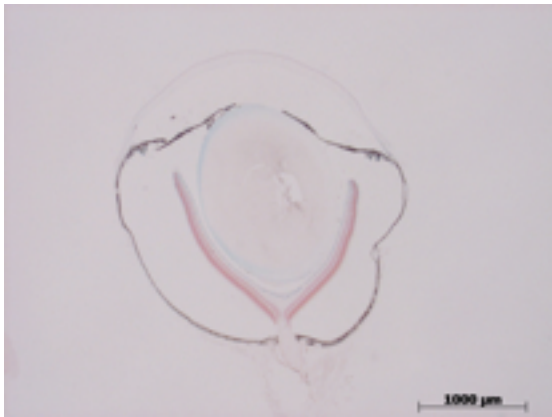
Iris:

1/1. The iris showed normal pigmentation without rubeosis or pupillary membranes.

Gene: Pfn1

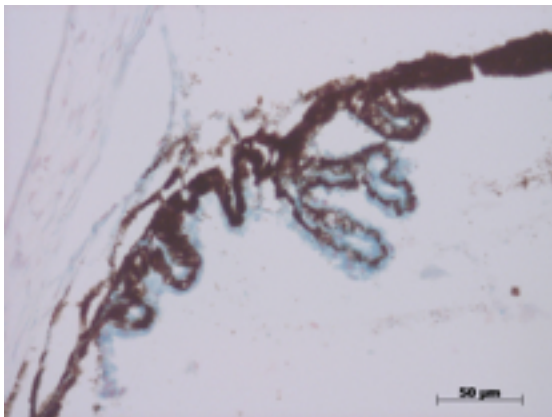
Genotype +/-

Sanger Colony: MAOH



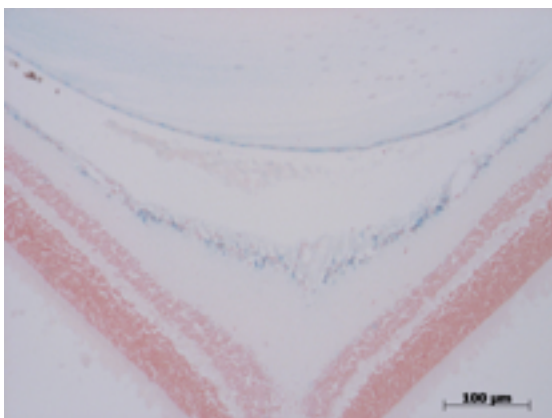
Lens:

1/1. No cataract was observed.



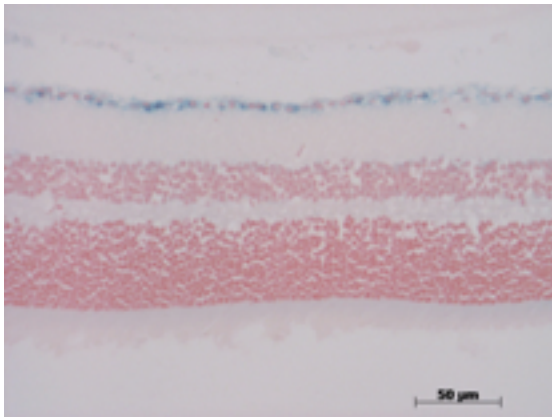
Ciliary body:

1/1. Normal stroma, pigmented and nonpigmented layers were present along with cilia.



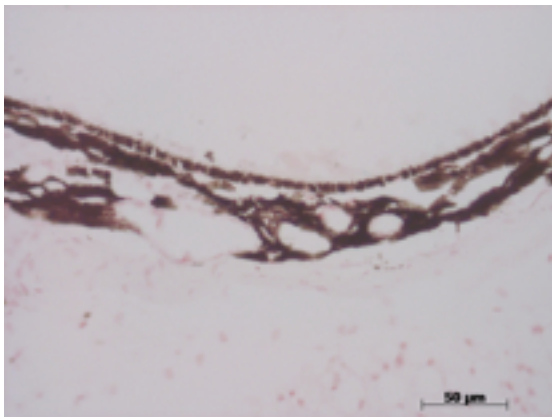
Vitreous:

1/1. No abnormal opacities or cells.



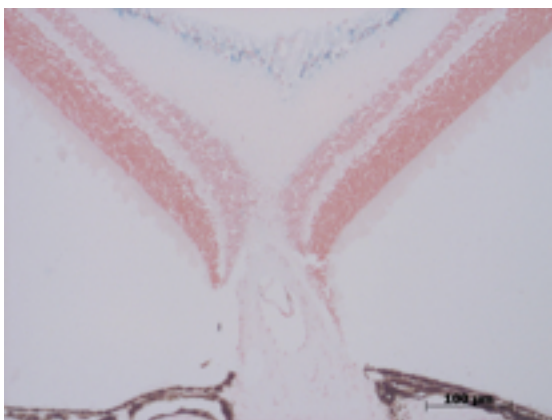
Retina:

1/1. The retinal ganglion, inner nuclear and photoreceptor layers are normal.



Retinal pigment epithelium and Choroid:

1/1. Normal pigmentation. Bruch's membrane is intact. No neovascular membranes were noted.



Optic Nerve:

1/1. The nerve is normal.

Methods. 1 eye from 1 male mouse was enucleated by blunt dissection and fixed. Pupil-optic nerve sections were processed for lac Z detection with hematoxylin, and standard images were captured under light microscopy for review.