

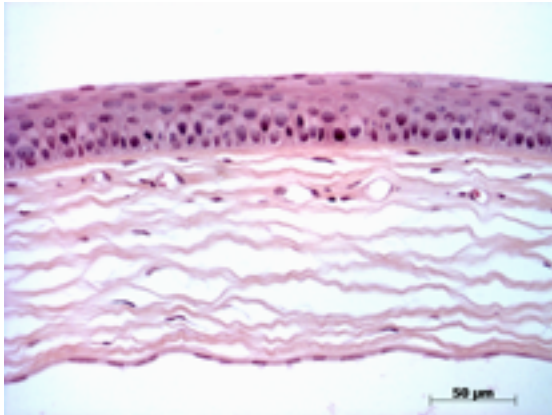
Gene: **Pex3**

Genotype -/-

Sanger Colony: MASQ

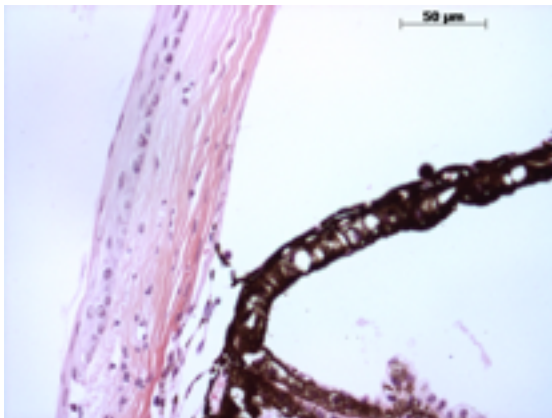
Abnormal Findings: Iris fused to lens (MP0004222), abnormal cornea (MP0005301, 0009742, 0005542).

EYE Phenotype



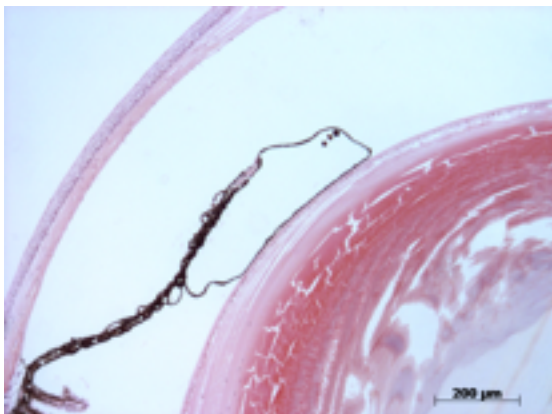
Cornea:

4/8. Basal layer of corneal epithelium is disrupted, the stromal layers are loose and there are stromal blood vessels. The endothelium is normal.



Anterior chamber:

8/8. The anterior chamber was of normal depth without cells, and the angle appeared open.



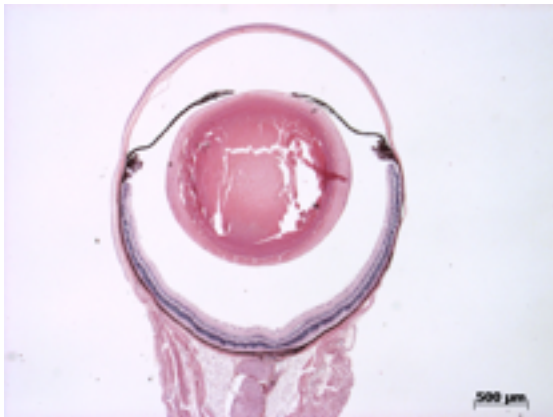
Iris:

8/8. Iris fused to lens.

Gene: **Pex3**

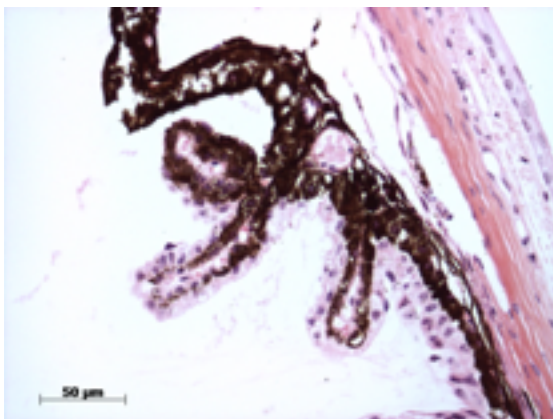
Genotype **-/-**

Sanger Colony: MASQ



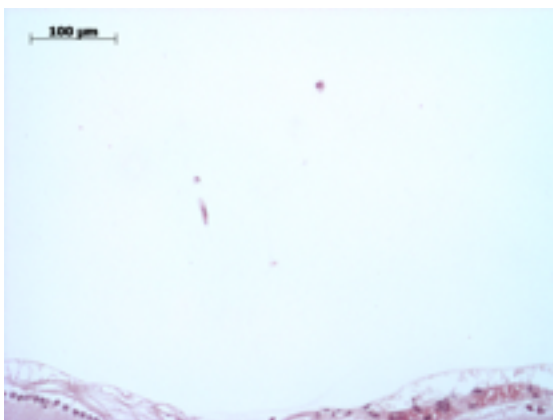
Lens:

8/8. No cataract was observed.



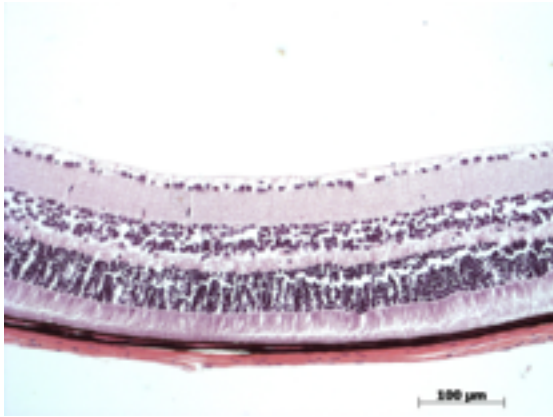
Ciliary body:

8/8 Normal stroma, pigmented and nonpigmented layers were present along with cilia.



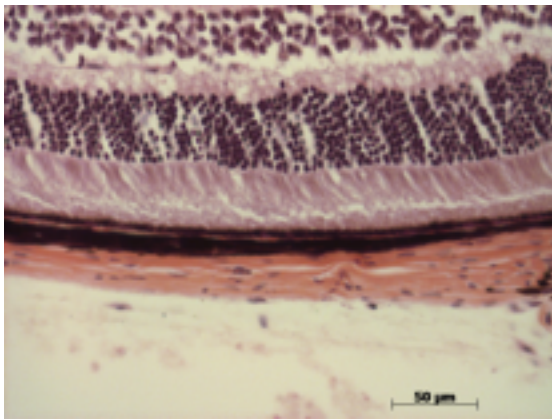
Vitreous:

8/8. No abnormal opacities or cells.



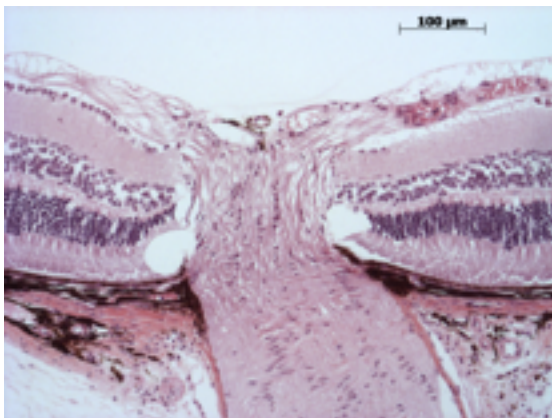
Retina:

8/8. The retinal ganglion, inner nuclear and photoreceptor layers are normal.



Retinal pigment epithelium and Choroid:

8/8. Normal pigmentation. Bruch's membrane is intact. No neovascular membranes were noted.



Optic Nerve:

8/8. The nerve is normal.

Methods. 6 eyes from 3 male mice were enucleated by blunt dissection and fixed. Pupil-optic nerve sections were processed with hematoxylin and eosin, and standard images were captured under light microscopy for review.