

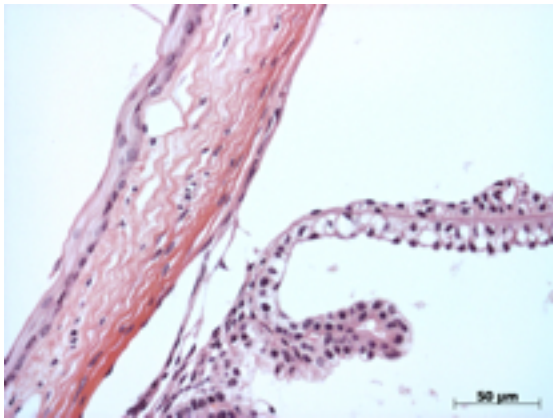
Abnormal Findings: None.

EYE Phenotype



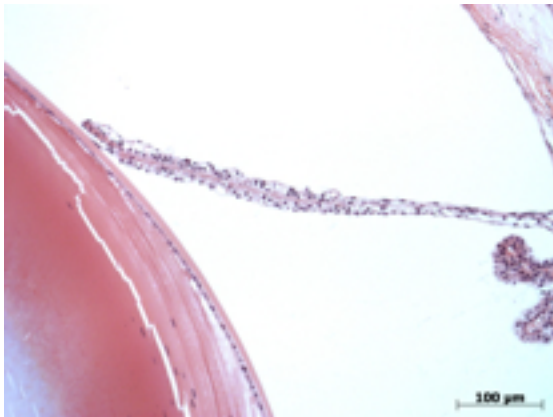
Cornea:

2/2. Normal corneal epithelium, stroma, and endothelium.



Anterior chamber:

2/2. The anterior chamber was of normal depth without cells, and the angle appeared open.



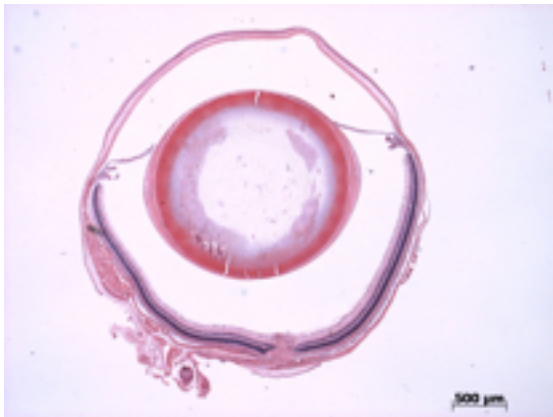
Iris:

2/2. The iris did not show rubeosis or pupillary membranes.

Gene: **Sgol1**

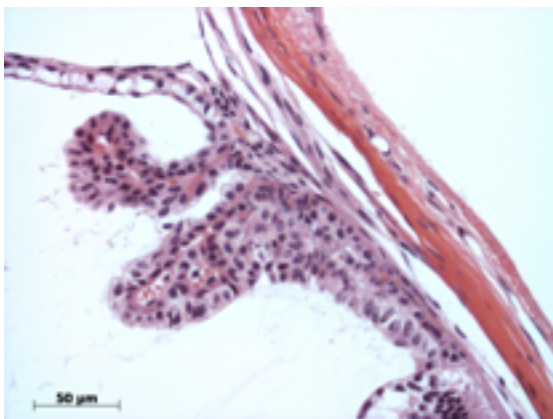
Genotype **+/-**

Sanger Colony: MBRY



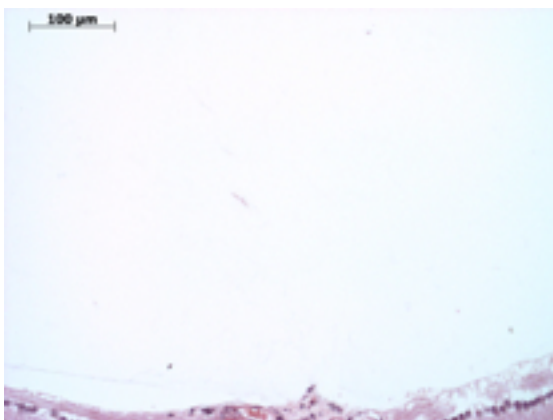
Lens:

2/2. No cataract was observed.



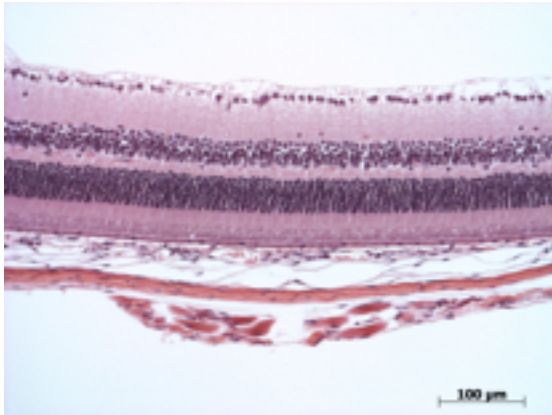
Ciliary body:

2/2. Normal stroma, cell layers were present along with cilia.



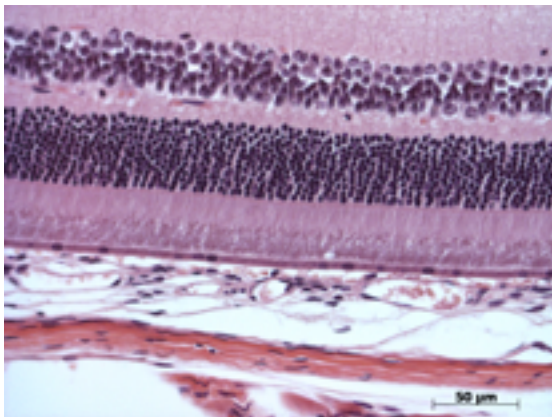
Vitreous:

2/2. No abnormal opacities or cells.



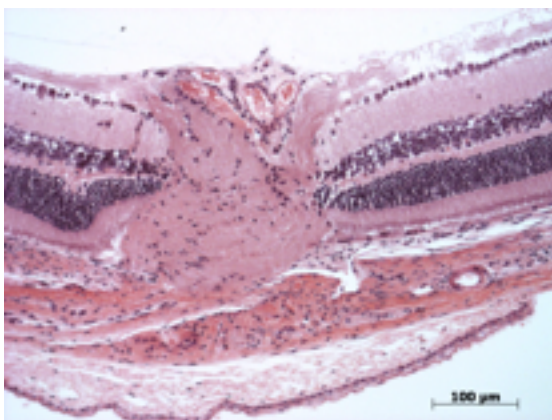
Retina:

2/2. The retinal ganglion, inner nuclear and photoreceptor layers are normal.



Retinal pigment epithelium and Choroid:

2/2. Normal pigmentation. Bruch's membrane is intact. No neovascular membranes were noted.



Optic Nerve:

2/2. The nerve is normal.

Methods. 2 eyes from 1 male mouse were enucleated by blunt dissection and fixed. Pupil-optic nerve sections were processed with hematoxylin and eosin, and standard images were captured under light microscopy for review.